

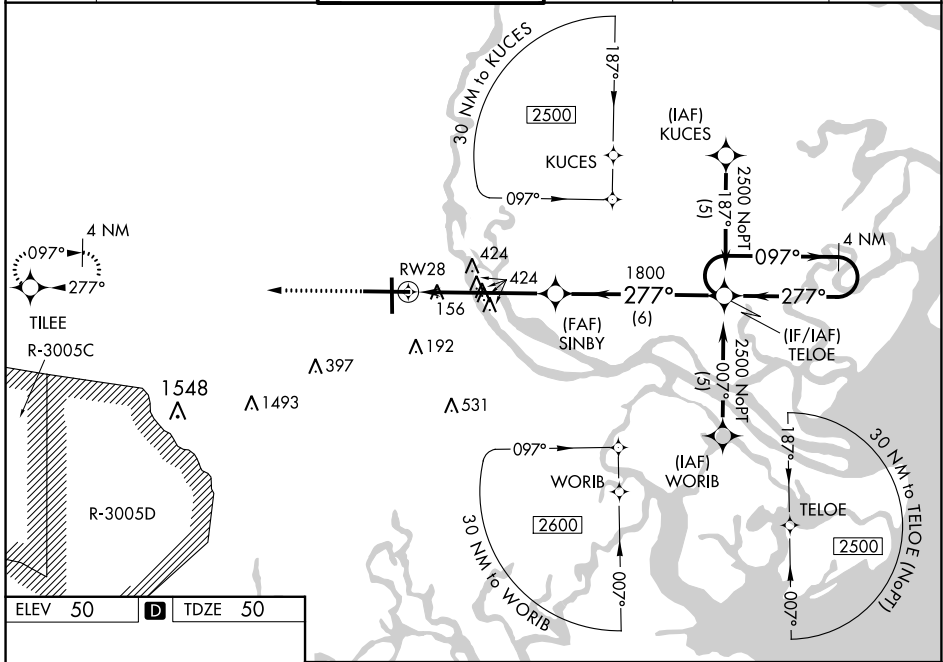
WAAS CH <b>40015</b> <b>W28A</b>	APP CRS <b>277°</b>	Rwy Idg TDZE Apt Elev	<b>9351</b> <b>50</b> <b>50</b>
--	------------------------	-----------------------------	---------------------------------------

# RNAV (GPS) Z RWY 28

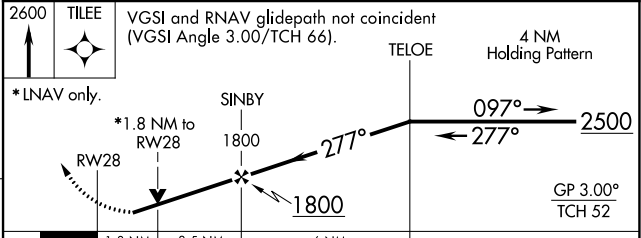
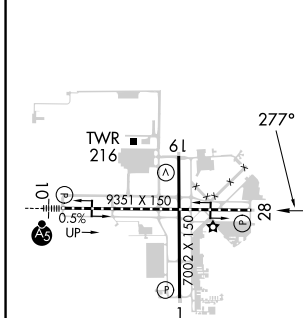
SAVANNAH/HILTON HEAD INTL (SAV)

RNP APCH.		MISSED APPROACH: Climb to 2600 direct TILEE and hold.			
<p>For uncompensated Baro-VNAV systems, LNAV/VNAV NA below -15°C (5°F) or above 49°C (120°F).</p>					

ATIS <b>123.75</b>	SAVANNAH APP CON* <b>125.3 371.875</b>	SAVANNAH TOWER* <b>125.975 (CTAF) 257.8</b>	GND CON <b>121.9 348.6</b>	CLNC DEL <b>119.55 291.775</b>	UNICOM <b>122.95</b>
-----------------------	---	--	-------------------------------	-----------------------------------	-------------------------



ELEV 50	<b>D</b>	TDZE 50
---------	----------	---------



CATEGORY	A	B	C	D
LPV DA	307-1		257 (300-1)	
LNAV/VNAV DA	431-1¼		381 (400-1¼)	
LNAV MDA	680-1	630 (700-1)	680-1¾	630 (700-1¾)
<b>C</b> CIRCLING	680-1	630 (700-1)	740-2 690 (700-2)	740-2¼ 690 (700-2¼)

SE-4, 31 OCT 2024 to 28 NOV 2024

SE-4, 31 OCT 2024 to 28 NOV 2024