

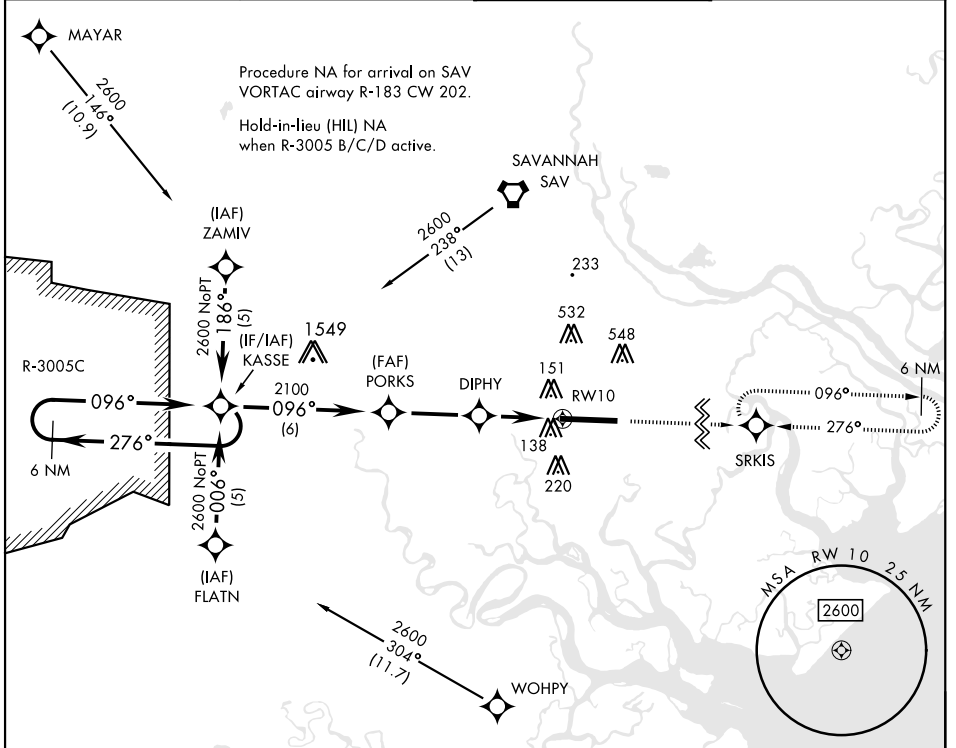
RNAV (GPS) RWY 10

APCH CRS	Rwy Idg	11,393
096°	TDZE	26
	Arprt Elev	41

[USA]

HUNTER AAF (KSVN)

RNP APCH-GPS			MISSED APPROACH: Climb to 2500 direct SRKIS and hold.
RADAR required when R-3005 B/C/D active.			
*When ALS inop, increase CAT AB vis to 1 mile; CAT CD vis to 1¼ miles. **Circling not authorized N of Rwy 10-28 for CAT D.			
ATIS ★ 127.525 323.125	SAVANNAH APP CON ★ 120.4 353.775	TOWER ★ 124.975 (CTAF) 0 279.575	GND CON ★ 121.8 291.675



SE-4, 31 OCT 2024 to 28 NOV 2024

SE-4, 31 OCT 2024 to 28 NOV 2024

2500 SRKIS 		ELEV	41	TDZE	26
6 NM Holding Pattern KASSE 		184 146 182 TWR 97 11,393 x 195 096°			
CATEGORY	A	B	C	D	
LNAV MDA*	460-1	434	(500-1)		
CIRCLING**	600-1	559 (600-1)	920-2½ 879 (900-2½)	920-2¾ 879 (900-2¾)	

RNAV (GPS) RWY 10