

# RNAV (GPS) RWY 28

WAAS CH <b>82111</b> <b>W28A</b>	APCH CRS <b>276°</b>	Rwy ldg <b>11,393</b> TDZE <b>41</b> Arprt Elev <b>41</b>
----------------------------------------	-------------------------	-----------------------------------------------------------------

[USA]

HUNTER AAF (KSVN)

RNP APCH-GPS

▼ \*When ALS inop, increase RVR to 40, vis to ¾ mile.  
 \*\* When ALS inop, increase vis 1½ miles.  
 \*\*\* When ALS inop, increase CAT AB RVR to 55, vis to 1 mile;  
 CAT CD vis to 1¾ miles.  
 \*\*\*\* Circling not authorized N of Rwy 10-28 for CAT D.

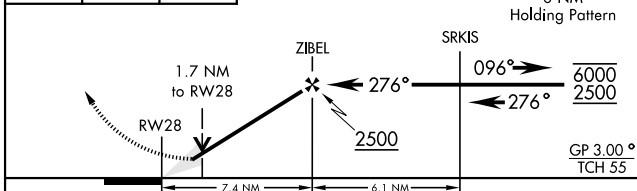
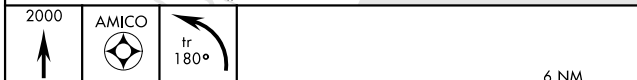
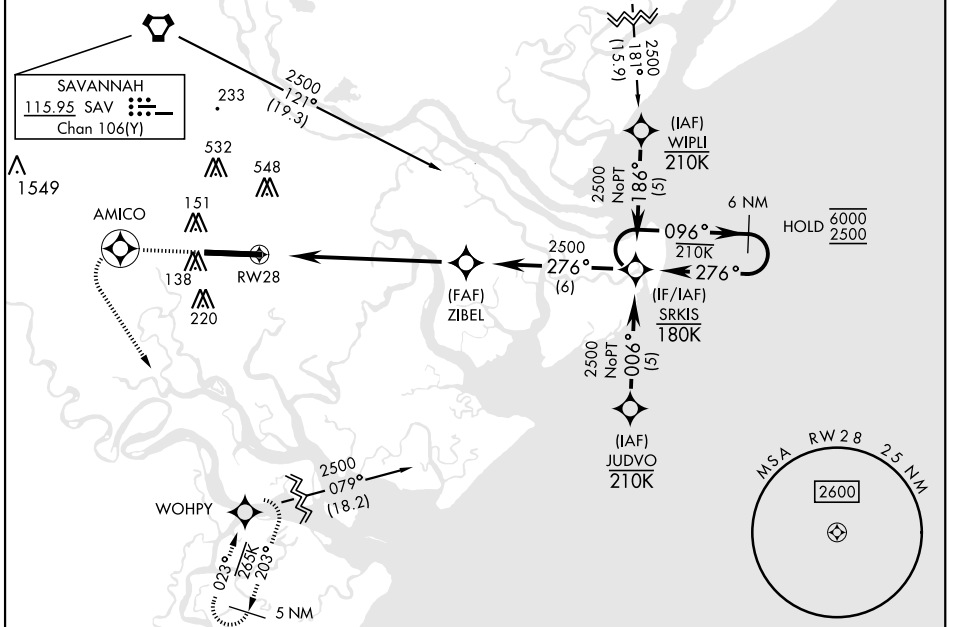
ALSF-1



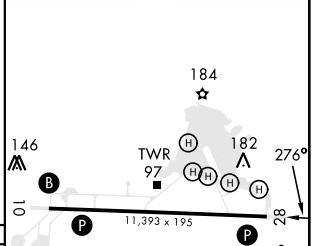
MISSED APPROACH: Climb to 2000 direct AMICO and left turn on track 180° to WOHPY and hold.

ATIS ★ <b>127.525 323.125</b>	SAVANNAH APP CON ★ <b>120.4 353.775</b>	TOWER ★ <b>124.975 (CTAF) 0 279.575</b>	GND CON ★ <b>121.8 291.675</b>
----------------------------------	--------------------------------------------	--------------------------------------------	-----------------------------------

For uncompensated Baro-VNAV systems, LNAV/VNAV NA below -15°C (5°F) or above 49°C (120°F)



ELEV	41	TDZE	41
------	----	------	----



CATEGORY	A	B	C	D
LPV DA*	241/24		200 (200-½)	
LNAV/** VNAV DA	487/45		446 (500-¾)	
LNAV MDA***	620/24	579 (600-½)	620-1¼ 579 (600-1¼)	
CIRCLING****	620-1	579 (600-1)	920-2½ 879 (900-2½)	920-2¾ 879 (900-2¾)

HIRL Rwy 10-28

REIL Rwy 10

# RNAV (GPS) RWY 28

SE-4, 31 OCT 2024 to 28 NOV 2024

SE-4, 31 OCT 2024 to 28 NOV 2024