

WAAS CH <b>78224</b> <b>W10A</b>	APP CRS <b>102°</b>	Rwy Idg <b>4650</b> TDZE <b>325</b> Apt Elev <b>378</b>
--	------------------------	---

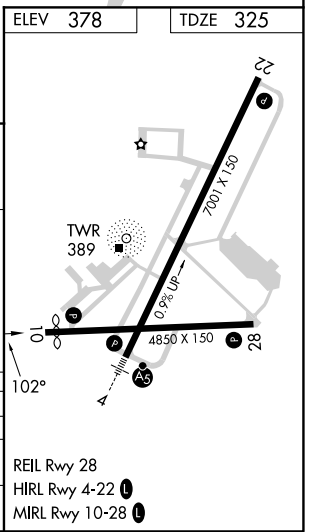
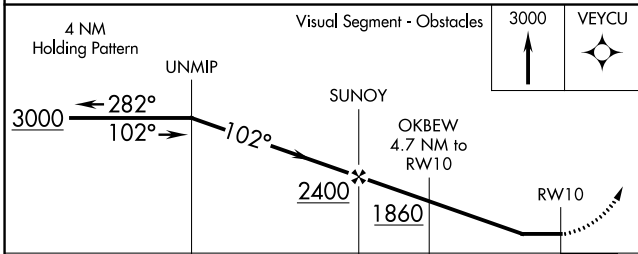
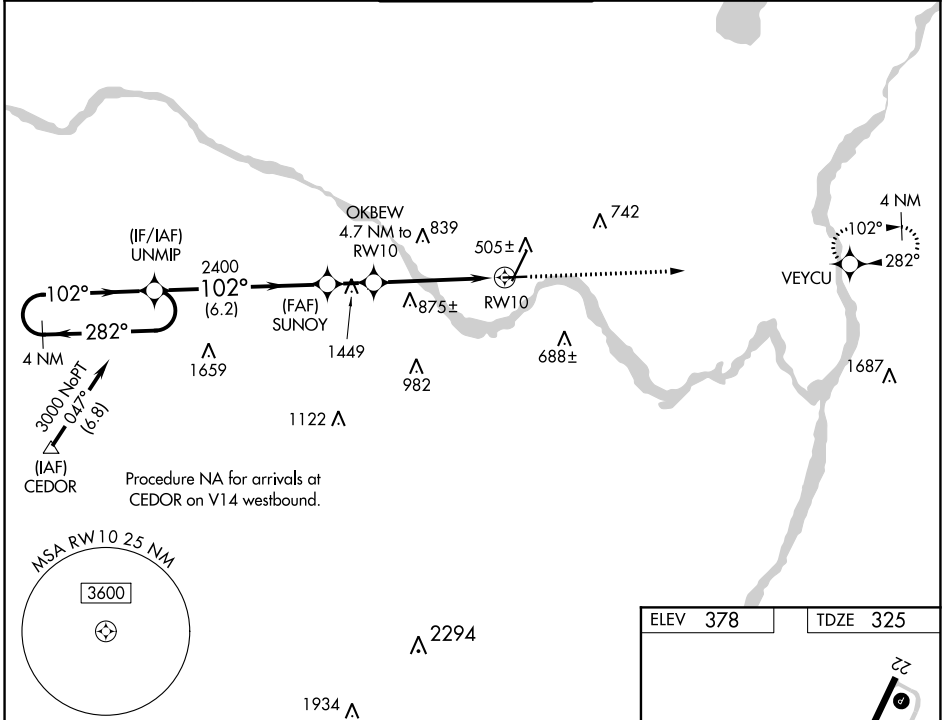
# RNAV (GPS) RWY 10

SCHENECTADY COUNTY (SCH)

**NA** DME/DME RNP-0.3 NA. When local altimeter setting not received, use Albany altimeter setting and increase all MDA 40 feet; increase LNAV Cat B and Circling Cat B/D visibility ¼ mile, and LNAV Cat C/D and Circling Cat C visibility ½ mile. Helicopter visibility reduction below 1 SM NA. Straight-in Rwy 10 NA at night, Circling Rwy 10 NA at night.

**MISSED APPROACH:** Climb to 3000 direct VEYCU and hold.

AWOS-3 <b>119.275</b>	ALBANY APP CON <b>132.825 263.075</b>	<b>SCHENECTADY TOWER ★</b> <b>121.3 (CTAF) 0 321.1</b>	GND CON <b>121.9</b>	UNICOM <b>122.95</b>
--------------------------	--	---	-------------------------	-------------------------



CATEGORY	A	B	C	D
LP MDA	1220-1¼	895 (900-1¼)	1220-2½	895 (900-2½)
LNAV MDA	1240-1¼	915 (900-1¼)	1240-2½	915 (900-2½)
CIRCLING	1240-1¼	862 (900-1¼)	1240-2½	1320-3 862 (900-2½) 942 (1000-3)

NE-2, 31 OCT 2024 to 28 NOV 2024

NE-2, 31 OCT 2024 to 28 NOV 2024