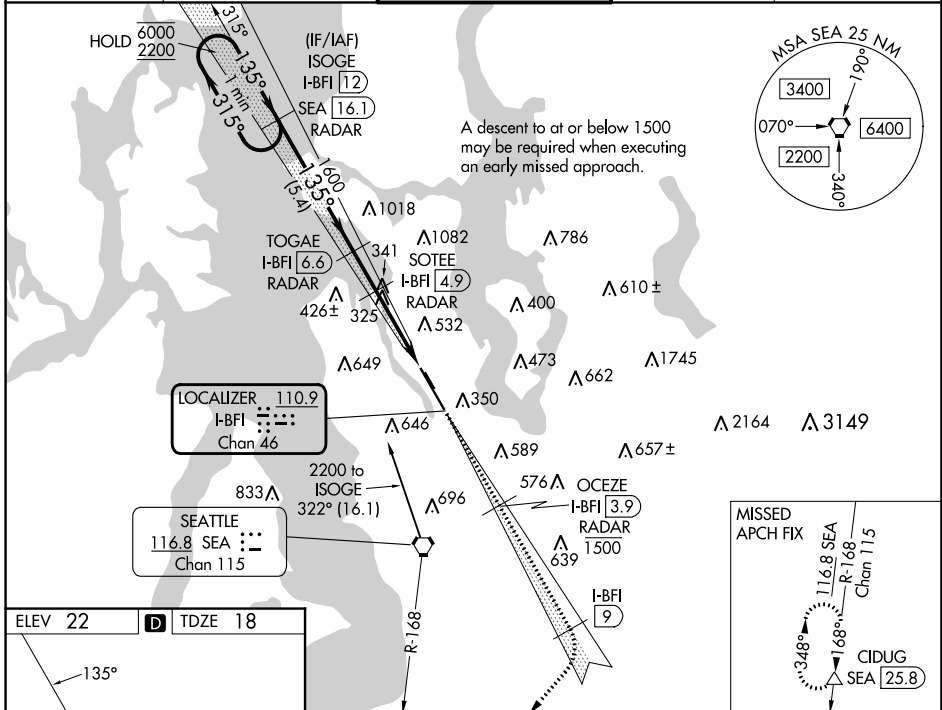


LOC/DME I-BFI 110.9 Chan 46	APP CRS 135°	Rwy Idg TDZE Apt Elev	9120 18 22
---	------------------------	-----------------------------	---------------------------------------

ILS or LOC RWY 14R

BOEING FLD/KING COUNTY INTL (BFI)

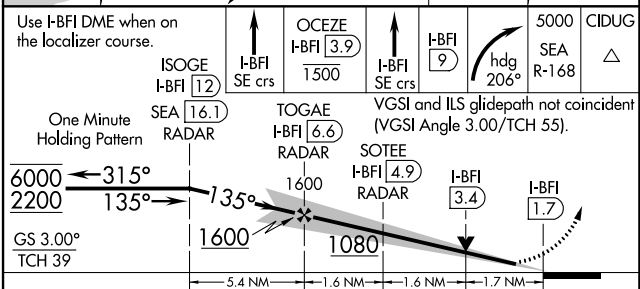
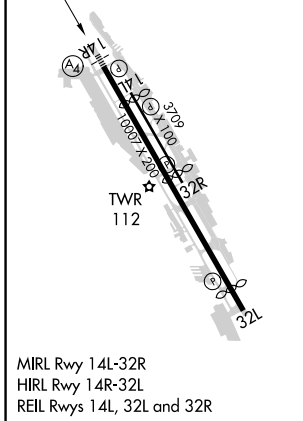
DME and RADAR required.		MALSF	MISSED APPROACH: Climb on I-BFI SE course to cross OCEZE/I-BFI 3.9 DME/RADAR at or below 1500 then climb on I-BFI SE course to I-BFI 9 DME then right turn on heading 206° and on SEA R-168 to 5000 to CIDUG/SEA 25.8 DME and hold.	
ATIS 127.75	SEATTLE APP CON 125.9 306.9	BOEING TOWER 120.6 257.8	GND CON 121.9	CLNC DEL 132.4



NW-1, 31 OCT 2024 to 28 NOV 2024

NW-1, 31 OCT 2024 to 28 NOV 2024

ELEV 22	D	TDZE 18
----------------	----------	----------------



CATEGORY	A	B	C	D
S-ILS 14R*	308/40 290 (300-¾)			
S-LOC 14R	600/40	582 (600-¾)	600-1 ⅓	582 (600-1 ⅓)
C CIRCLING	760-1 738 (800-1)	880-1 ¼ 858 (900-1 ¼)	960-2 ¾ 938 (1000-2 ¾)	960-3 938 (1000-3)