

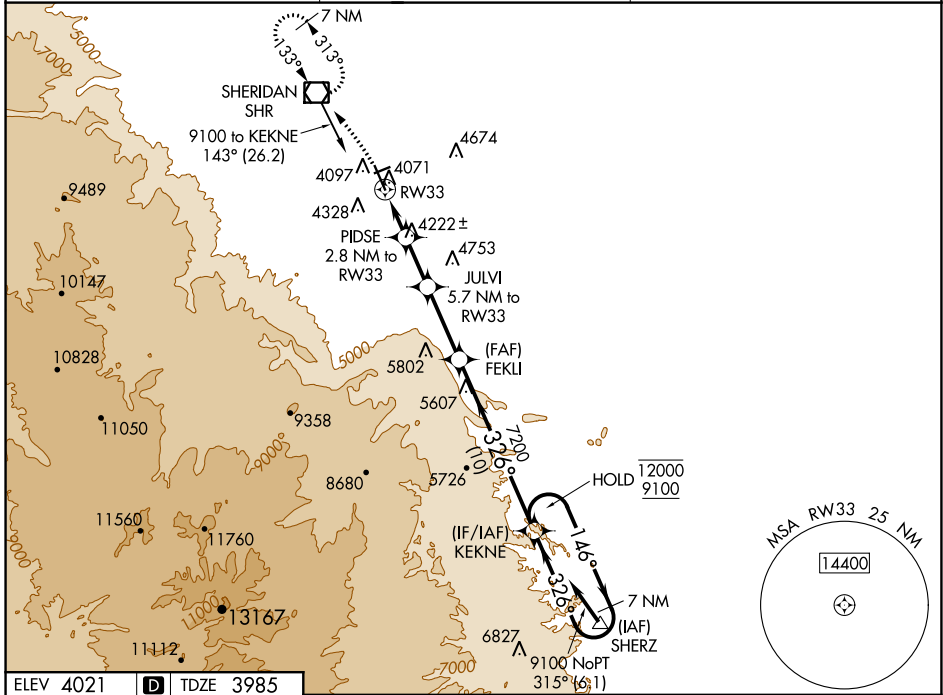
WAAS CH 65699 W33A	APP CRS 326°	Rwy Idg TDZE Apt Elev	8301 3985 4021
--	------------------------	-----------------------------	---

RNAV (GPS) RWY 33

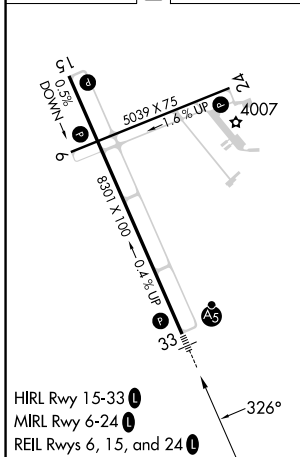
SHERIDAN COUNTY (SHR)

RNP APCH.	MALSR	MISSED APPROACH: Climbing left turn to 7300 direct SHR VOR/DME and hold, continue climb-in-hold to 7300.
<p>Circling to Rwy 24 NA at night. Baro-VNAV NA. When local altimeter setting not received, procedure NA.</p> <p>-19°C</p>		

ASOS 135.175	SALT LAKE CENTER 127.75 351.9	UNICOM 123.0 (CTAF)
------------------------	---	-------------------------------



ELEV 4021		TDZE 3985
-----------	--	-----------



7300	SHR	PIDSE	JULVI	FEKLI	KEKNE	7 NM Holding Pattern
		2.8 NM to RW33	5.7 NM to RW33	7200	7200	146° → 12000 ← 326° 9100
		*1.1 NM to RW33				GP 3.00° TCH 55
		1.1 1.7 NM	2.9 NM	4.3 NM	10 NM	
CATEGORY	A	B	C	D		
LPV DA	4205-½		220 (200-½)			
LNAV/VNAV DA	4380-¾		395 (400-¾)			
LNAV MDA	4380-½		395 (400-½)		4380-⅝ 395 (400-⅝)	
CIRCLING	4600-1 579 (600-1)	4640-1 619 (700-1)	4860-2½ 839 (900-2½)	5220-3 1199 (1200-3)		

NW-1, 31 OCT 2024 to 28 NOV 2024

NW-1, 31 OCT 2024 to 28 NOV 2024