

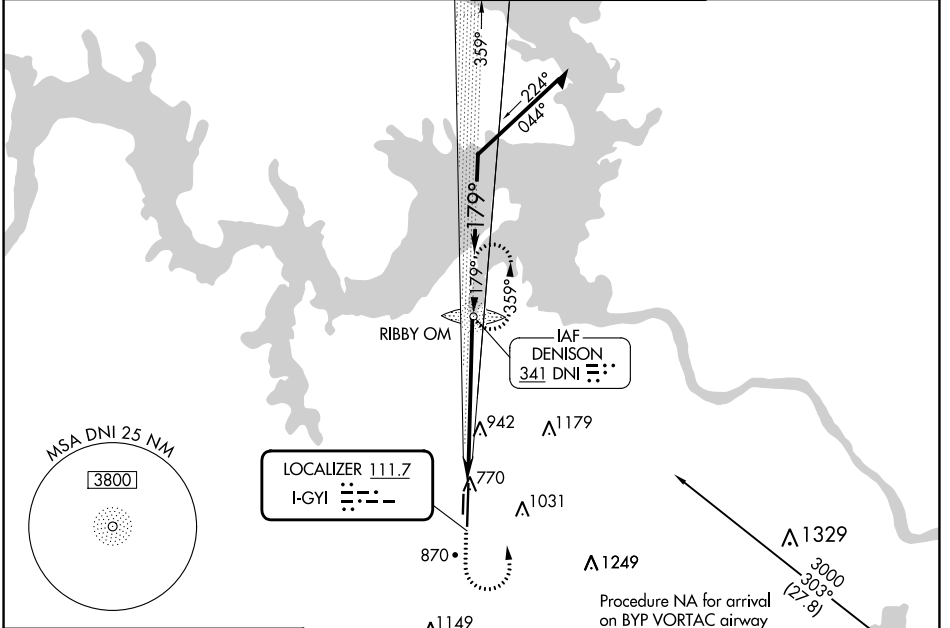
LOC I-GYI	APP CRS	Rwy Idg	9000
111.7	179°	TDZE	741
		Apt Elev	749

ILS or LOC RWY 18L

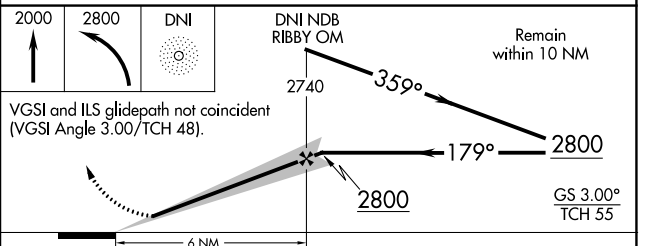
NORTH TEXAS RGNL/PERRIN FLD (GYI)

ADF required.	MALSR A5	MISSED APPROACH: Climb to 2000 then climbing left turn to 2800 direct DNI NDB and hold.
NA Circling Rwy 18R, 36L NA at night. Autopilot coupled approach NA below 1900. For inop ALS, increase S-LOC-18L Cat C/D visibility to 1 $\frac{3}{8}$ SM.		

ATIS 118.775	FORT WORTH CENTER 124.75 323.0	NORTH TEXAS TOWER ★ 120.575 (CTAF) 233.7	GND CON 124.125
------------------------	--	--	---------------------------



ELEV 749	TDZE 741
179°	



CATEGORY	A	B	C	D
S-ILS 18L	941- $\frac{1}{2}$		200 (200- $\frac{1}{2}$)	
S-LOC 18L	1220- $\frac{1}{2}$	479 (500- $\frac{1}{2}$)	1220-1	479 (500-1)
<input checked="" type="checkbox"/> CIRCLING	1300-1	551 (600-1)	1400-1 $\frac{3}{4}$	1540-2 $\frac{1}{2}$ 791 (800-2 $\frac{1}{2}$)

SC-2, 31 OCT 2024 to 28 NOV 2024

SC-2, 31 OCT 2024 to 28 NOV 2024