

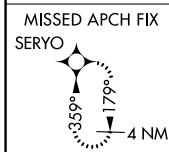
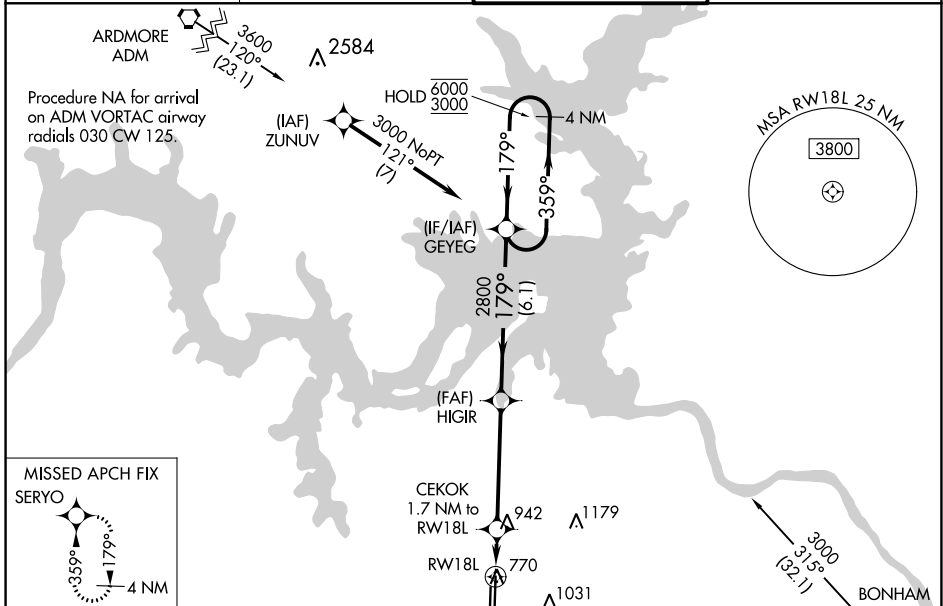
WAAS CH 86528 W18A	APP CRS 179°	Rwy Idg 9000 TDZE 741 Apt Elev 749
--	------------------------	---

RNAV (GPS) RWY 18L

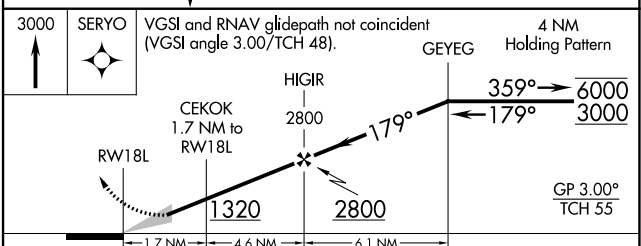
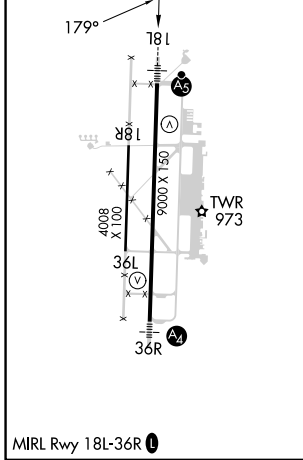
NORTH TEXAS RGNL/PERRIN FLD (GYI)

RNP APCH - GPS.	MALSR	MISSED APPROACH: Climb to 3000 direct SERYO and hold.
Circling Rwy 18R, 36L NA at night. For uncompensated Baro-VNAV systems, LNAV/VNAV NA below -10°C or above 54°C. For inop ALS, increase LNAV/VNAV all Cats visibility to 7/5 SM.		

ATIS 118.775	FORT WORTH CENTER 124.75 323.0	NORTH TEXAS TOWER ★ 120.575 (CTAF) 233.7	GND CON 124.125
------------------------	--	--	---------------------------



ELEV 749	TDZE 741
-----------------	-----------------



CATEGORY	A	B	C	D
LPV DA		941-1/2	200 (200-1/2)	
LNAV/VNAV DA		1015-1/2	274 (300-1/2)	
LNAV MDA	1200-1/2	459 (500-1/2)	1200-7/8	459 (500-7/8)
CIRCLING	1300-1	551 (600-1)	1400-1 3/4 651 (700-1 3/4)	1540-2 1/2 791 (800-2 1/2)

SC-2, 31 OCT 2024 to 28 NOV 2024

SC-2, 31 OCT 2024 to 28 NOV 2024