

APP CRS	Rwy Idg	<b>4198</b>
<b>234°</b>	TDZE	<b>178</b>
	Apt Elev	<b>179</b>

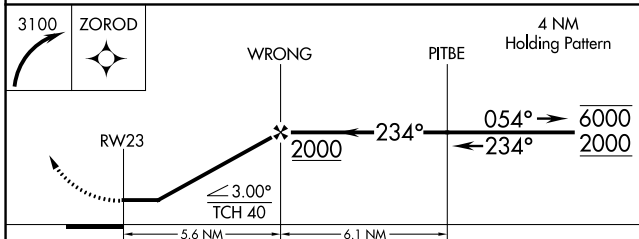
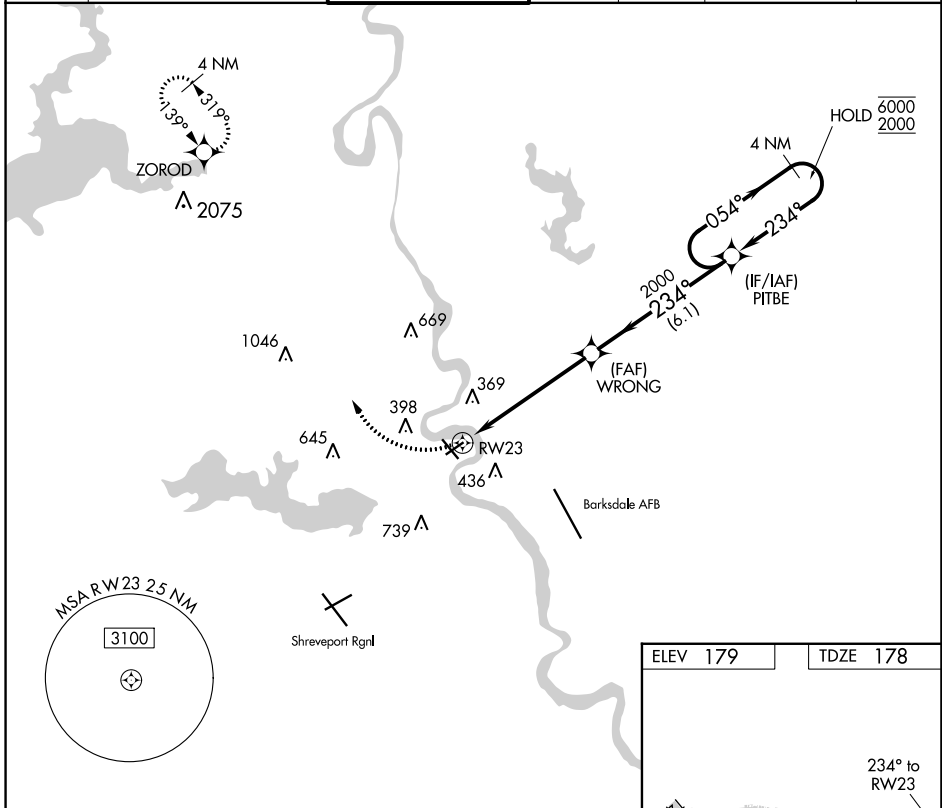
# RNAV (GPS) RWY 23

SHREVEPORT DOWNTOWN (DTN)

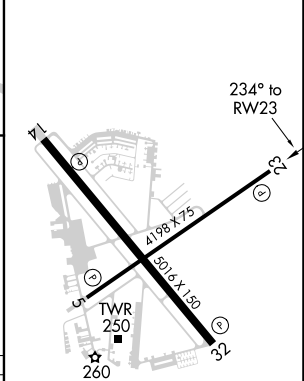
RNP APCH.  
 ⚠ Circling Rwy 23, 32 NA at night. Rwy 23 helicopter visibility reduction below 1 SM NA. Straight-in minimums NA at night.

MISSED APPROACH: Climbing right turn to 3100 direct ZOROD and hold.

ASOS	SHREVEPORT APP CON	DOWNTOWN TOWER *	GND CON	CLNC DEL	CLNC DEL	UNICOM
<b>118.525</b>	<b>119.9 335.55</b> (153°-319°) <b>123.75 360.725</b> (320°-152°)	<b>120.225</b> (CTAF) <b>284.6</b>	<b>121.65</b>	<b>121.65</b>	<b>119.9</b> (When twr closed)	<b>122.95</b>



ELEV 179	TDZE 178
----------	----------



CATEGORY	A	B	C	D
LNVA MDA	640-1	462 (500-1)		NA
CIRCLING	800-1 621 (700-1)	920-1 741 (800-1)		NA

MIRL Rwy 5-23  
 HIRL Rwy 14-32  
 REIL Rws 5, 14, 23, and 32

SC-4, 31 OCT 2024 to 28 NOV 2024

SC-4, 31 OCT 2024 to 28 NOV 2024