

SIoux FALLS, SOUTH DAKOTA

HI-ILS or LOC RWY 3

| | | |
|---------------------------|-------------------------|--------------------------|
| LOC I-FSD 109.9 | APCH CRS 030° | Rwy Idg 8999 |
| | | TDZE 1424 |
| | | Arpt Elev 1430 |

AL-396 [USAF]

JOE FOSS FLD (KFSD)

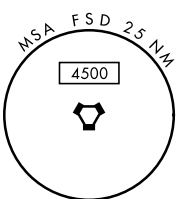
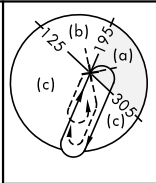
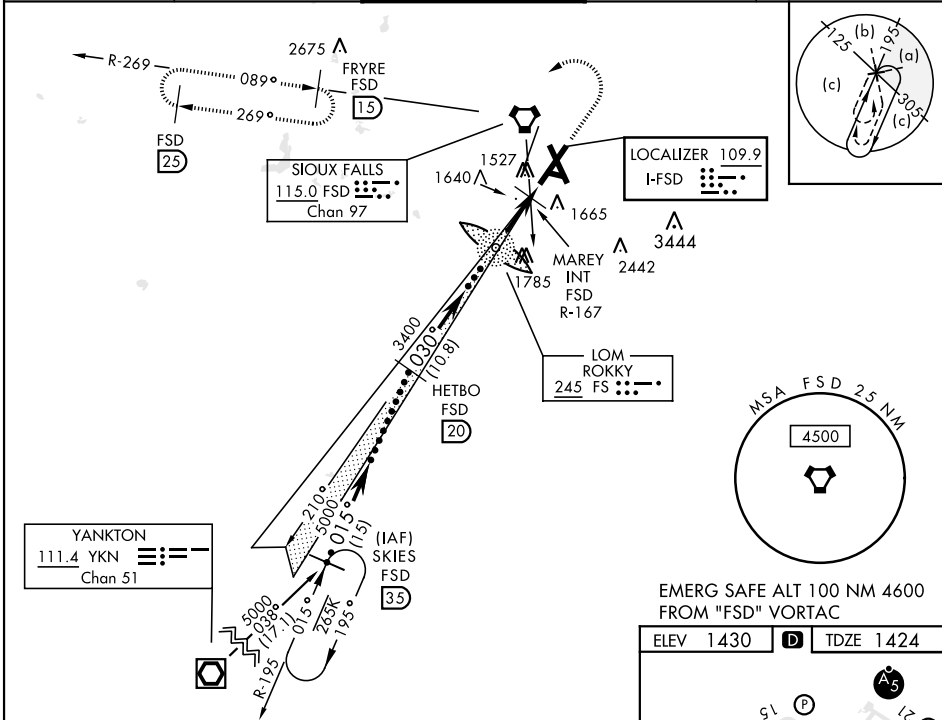
DME required.

- ▲ * When ALS inop, increase CAT CDE RVR to 40, vis to ¾ mile.
- ** When ALS inop, increase CAT CDE vis to 1¾ mile.
- *** When ALS inop, increase CAT CDE RVR to 55, vis to 1 mile.

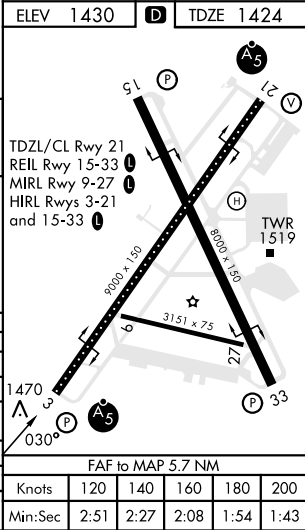
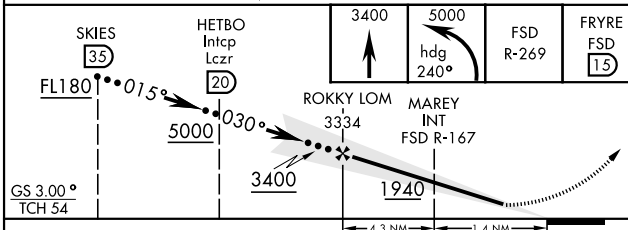


MISSED APPROACH: Climb to 3400, then climbing left turn to 5000 on heading 240° and FSD VORTAC R-269 to FRYRE (FSD 15 DME) and hold.

| | | | | |
|----------------------|---|---|-------------------------------|-----|
| ATIS 126.6 | SIoux FALLS APP CON 125.8 306.2 | SIoux FALLS TOWER ★ 118.3(CTAF) 257.8 | GND CON 121.9 348.6 | ASR |
|----------------------|---|---|-------------------------------|-----|



EMERG SAFE ALT 100 NM 4600 FROM "FSD" VORTAC



| CATEGORY | C | D | E |
|------------------|-------------------------|-------------------------|-----------------------|
| S-ILS 3* | 1674/24 | 250 | (300-1/2) |
| S-LOC 3** | 1940/55 516 (600-1) | 1940/60 516 (600-1½) | |
| CIRCLING | 2060-1¾ 630 (700-1¾) | 2200-2½ 770 (800-2½) | 2300-3 870 (900-3) |
| MAREY FIX MINIMA | | | |
| S-LOC 3*** | 1780/30 356 (400-¾) | 1780/40 356 (400-¾) | |
| CIRCLING | 2060-1¾ 630 (700-1¾) | 2200-2½ 770 (800-2½) | 2300-3 870 (900-3) |

| FAF to MAP 5.7 NM | | | | | |
|-------------------|------|------|------|------|------|
| Knots | 120 | 140 | 160 | 180 | 200 |
| Min:Sec | 2:51 | 2:27 | 2:08 | 1:54 | 1:43 |

SIoux FALLS, SOUTH DAKOTA

43°35'N-96°45'W

JOE FOSS FLD (KFSD)

Amdt 9B 04NOV21

HI-ILS or LOC RWY 3

NC-1, 31 OCT 2024 to 28 NOV 2024

NC-1, 31 OCT 2024 to 28 NOV 2024