

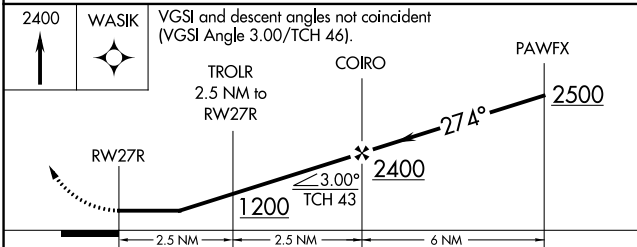
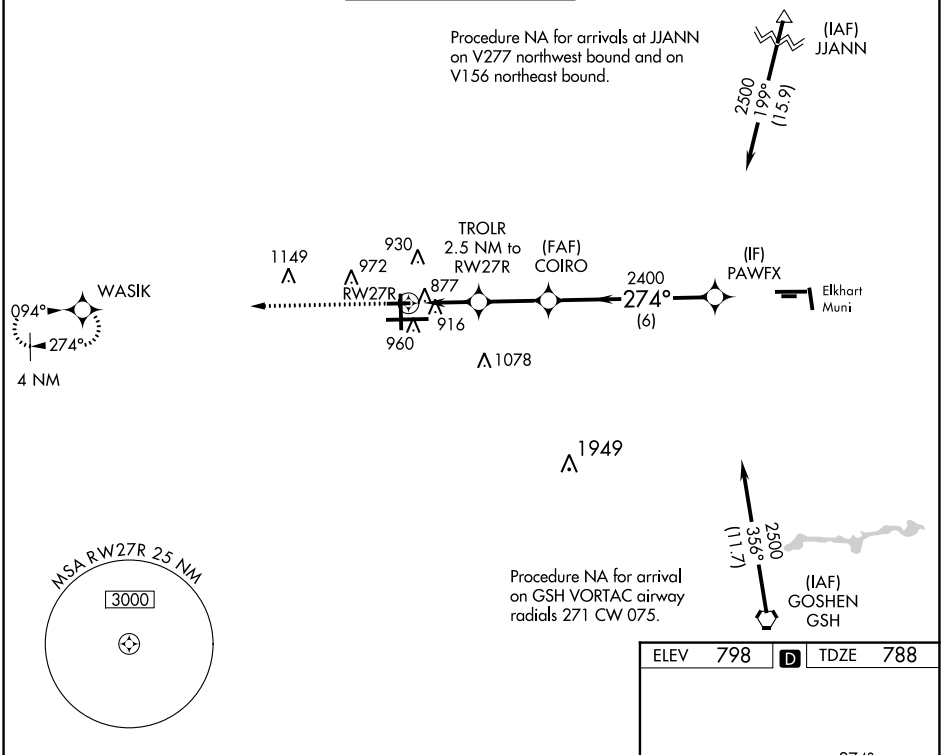
WAAS CH <b>86542</b> <b>W27B</b>	APP CRS <b>274°</b>	Rwy Idg <b>4300</b> TDZE <b>788</b> Apt Elev <b>798</b>
--	------------------------	---

# RNAV (GPS) RWY 27R

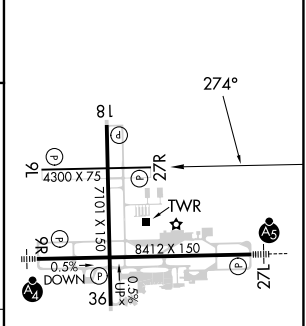
SOUTH BEND INTL (SBN)

RNP APCH - GPS.	MISSED APPROACH: Climb to 2400 direct WASIK and hold.
<p>▼ Rwy 27 helicopter visibility reduction below 1 SM NA. Circling</p> <p>▲ Rwy 27R NA at night. Straight-in Rwy 27R NA at night.</p>	

ATIS <b>120.675</b>	SOUTH BEND APP CON * <b>118.55 257.8</b>	SOUTH BEND TOWER * <b>135.675 (CTAF) 0 257.8</b>	GND CON <b>121.7</b>	CLNC DEL <b>121.9</b>
------------------------	---	---	-------------------------	--------------------------



ELEV 798	<b>D</b>	TDZE 788
----------	----------	----------



CATEGORY	A	B	C	D
LP MDA	1140-1		352 (400-1)	
LNAV MDA	1180-1	392 (400-1)	1180-1½	392 (400-1½)
<b>C</b> CIRCLING	1280-1	482 (500-1)	1440-1¾	1500-2¼
			642 (700-1¾)	702 (800-2¼)

HIRL Rwy 9R-27L	<b>0</b>
MIRL Rwy 18-36	<b>0</b>
MIRL Rwy 9L-27R	<b>0</b>

EC-2, 31 OCT 2024 to 28 NOV 2024

EC-2, 31 OCT 2024 to 28 NOV 2024