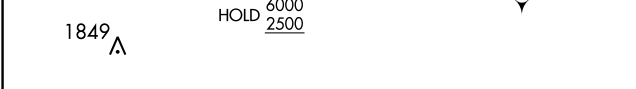
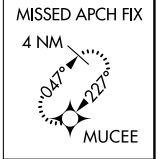
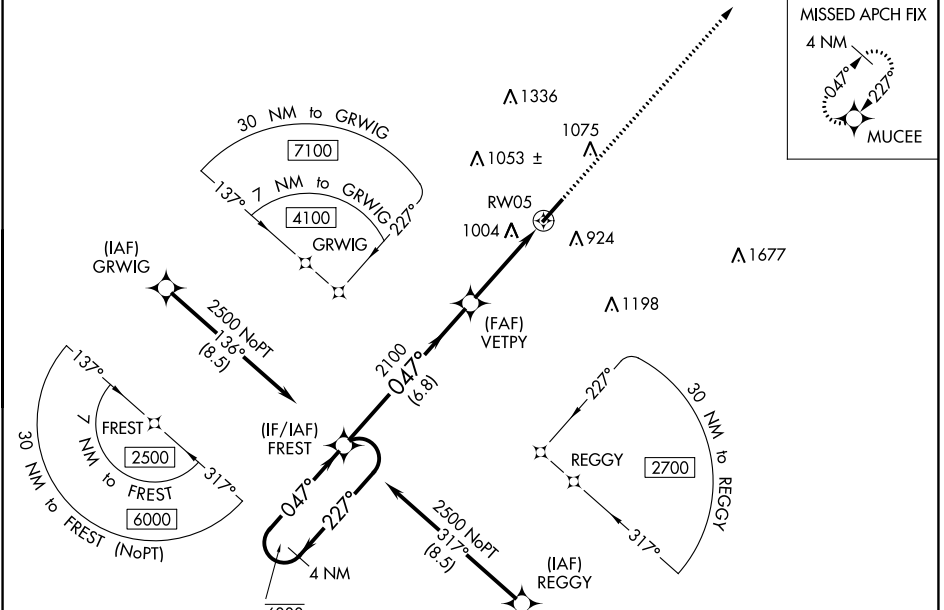


WAAS CH 61226 W05A	APP CRS 047°	Rwy Idg TDZE Apt Elev	5852 802 802
----------------------------------------	------------------------	-----------------------------	-----------------------------------------

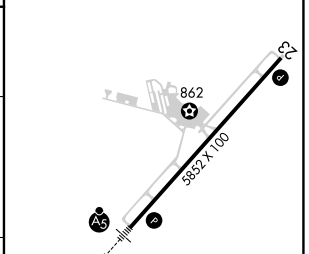
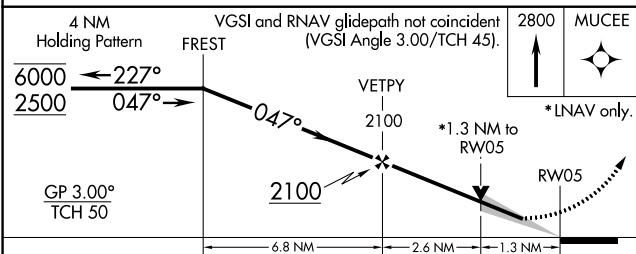
RNAV (GPS) RWY 5

SPARTANBURG DOWNTOWN MEML/SIMPSON FLD (SP.A)

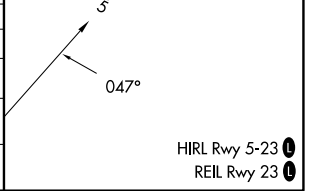
RNP APCH-GPS. For uncompensated Baro-VNAV systems, LNAV/VNAV NA below -16°C or above 54°C.		MALSR 	MISSED APPROACH: Climb to 2800 direct MUCEE and hold.
AWOS-3 133.925	GREER APP CON * 119.4 350.2	CLNC DEL 120.55	UNICOM 123.0 (CTAF)



ELEV 802	TDZE 802
----------	----------



CATEGORY	A	B	C	D
LPV DA		1002- ³ / ₄	200 (200- ³ / ₄)	
LNAV/VNAV DA		1260- ⁷ / ₈	458 (500- ⁷ / ₈)	
LNAV MDA	1260- ³ / ₄	458 (500- ³ / ₄)	1260- ⁷ / ₈	458 (500- ⁷ / ₈)
CIRCLING	1320-1	518 (600-1)	1380-1 ¹ / ₂ 578 (600-1 ¹ / ₂)	1420-2 618 (700-2)



RNAV (GPS) RWY 5

SE-2, 31 OCT 2024 to 28 NOV 2024

SE-2, 31 OCT 2024 to 28 NOV 2024