

SPOKANE, WASHINGTON

AL-402 (FAA)

23334

VORTAC GEG <b>115.5</b> Chan <b>102</b>	APP CRS <b>046°</b>	Rwy Idg TDZE Apt Elev	<b>4499</b> <b>1949</b> <b>1957</b>
---	------------------------	-----------------------------	---

# VOR RWY 4L

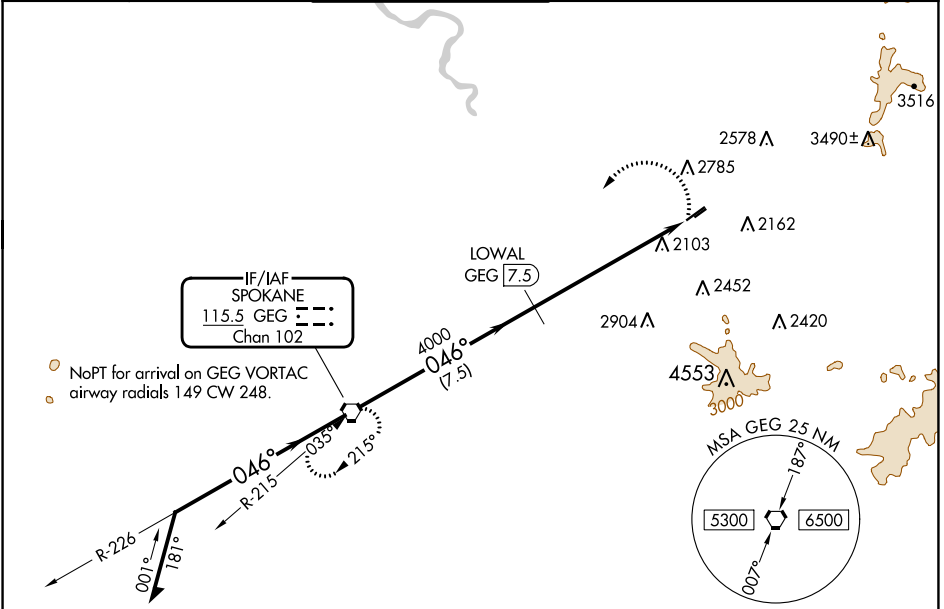
FELTS FLD (S'F'F)

DME required.

**⚠** Circling NA northwest of Rwy 4L-22R. Circling Rwy 22L NA at night. Rwy 4L helicopter visibility reduction below ¾ SM NA.  
**❄** -16°C

MISSED APPROACH: Climbing left turn to 4500 direct GEG VORTAC and hold.

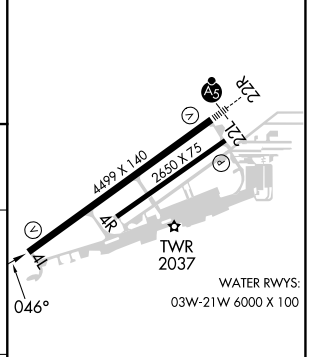
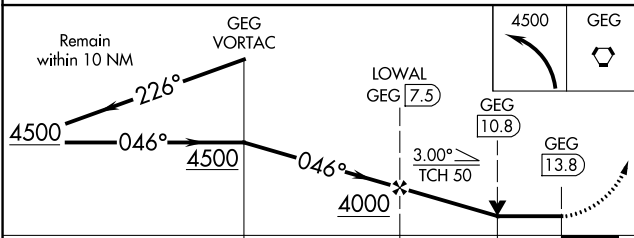
ATIS <b>120.55</b>	SPOKANE APP CON <b>133.35 263.0</b>	FELTS TOWER * <b>132.5 (CTAF) 239.025</b>	GND CON <b>121.7</b>	CLNC DEL <b>121.7</b>	UNICOM <b>122.95</b>
-----------------------	--	--	-------------------------	--------------------------	-------------------------



NW-1, 31 OCT 2024 to 28 NOV 2024

NW-1, 31 OCT 2024 to 28 NOV 2024

ELEV 1957	<b>D</b> TDZE 1949
-----------	--------------------



CATEGORY	A	B	C	D
S-4L	2960-1¼ 1011 (1100-1¼)	2960-1½ 1011 (1100-1½)	2960-3	1011 (1100-3)
<b>C</b> CIRCLING	2960-1¼ 1003 (1100-1¼)	2960-1½ 1003 (1100-1½)	3100-3 1143 (1200-3)	3360-3 1403 (1500-3)

REIL Rwy 4L **Ⓛ**  
 MRL Rwy 4L-22R **Ⓛ**

SPOKANE, WASHINGTON  
 Amdt 6B 15JUN23

47°41'N-117°19'W

# FELTS FLD (S'F'F) VOR RWY 4L