


WAAS CH <b>45517</b> <b>W28A</b>	APP CRS <b>281°</b>	Rwy Idg TDZE Apt Elev	<b>9014</b> <b>413</b> <b>421</b>
--	------------------------	-----------------------------	---

# RNAV (GPS) Z RWY 28

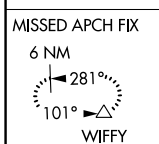
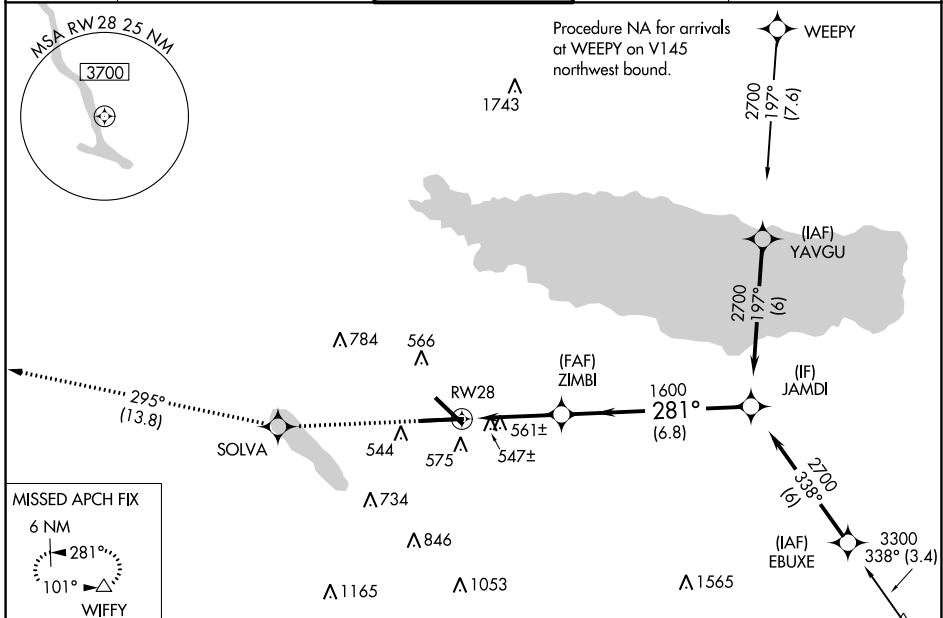
SYRACUSE HANCOCK INTL (SYR)

**▽** For uncompensated Baro-VNAV systems, LNAV/VNAV NA below -21°C (-6°F) or above 54°C (130°F). DME/DME RNP-0.3 NA.  
**▲** For inop ALSF-2, increase LNAV Cats C/D visibility to 1½ mile.

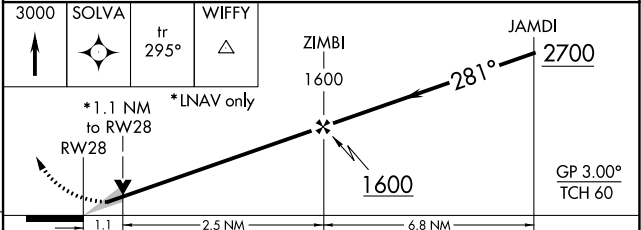
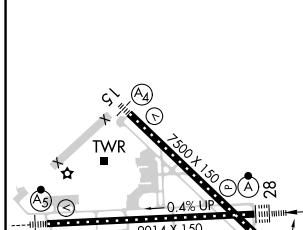
**ALSF-2**  


**MISSED APPROACH:** Climb to 3000 direct SOLVA and on track 295° to WIFFY and hold.

<b>ATIS</b> 124.225	<b>SYRACUSE APP CON</b> 126.125 269.125	<b>SYRACUSE TOWER</b> 120.3 239.0	<b>GND CON</b> 121.7 348.6	<b>CLNC DEL</b> 125.05 257.775
------------------------	--	--------------------------------------	-------------------------------	-----------------------------------



ELEV 421	<b>D</b>	TDZE 413
----------	----------	----------



CATEGORY	A	B	C	D
LPV DA		613/18	200 (200-½)	
LNAV/VNAV DA		850/50	437 (500-1)	
LNAV MDA	820/24	407 (400-½)	820/40	407 (400-¾)
CIRCLING	900-1 479 (500-1)	920-1 499 (500-1)	1020-1½ 599 (600-1½)	1180-2½ 759 (800-2½)

NE-2, 31 OCT 2024 to 28 NOV 2024

NE-2, 31 OCT 2024 to 28 NOV 2024