

TACOMA, WASHINGTON

ILS RWY 34 (CAT II)

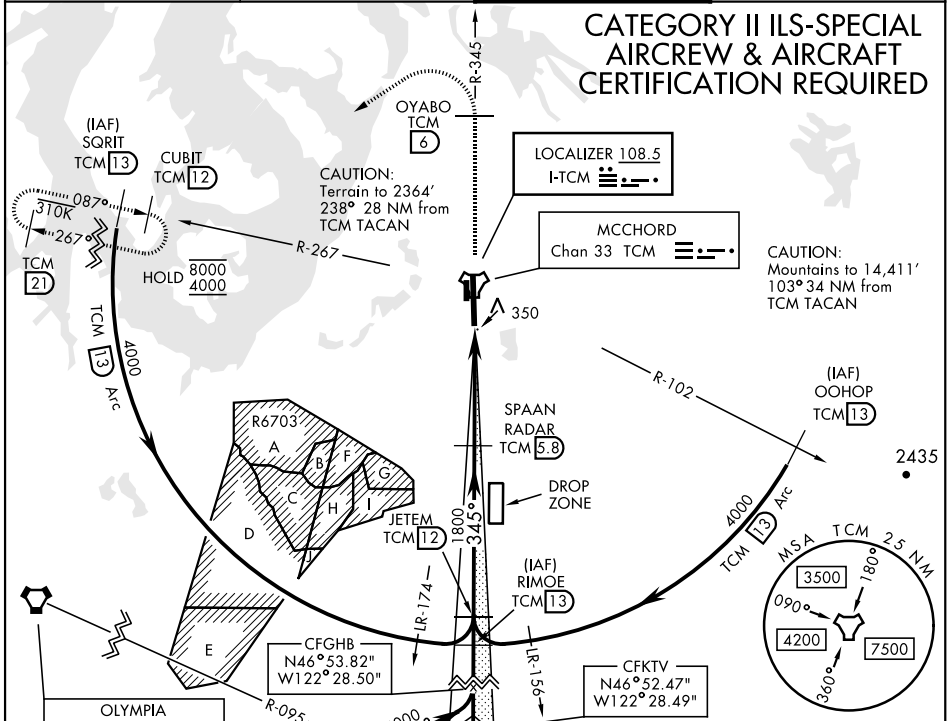
MCCORD FLD (KTCM)

LOC I-TCM 108.5	APCH CRS 345°	Rwy Idg TDZE Arprt Elev 10,108 322 322
---------------------------	-------------------------	--

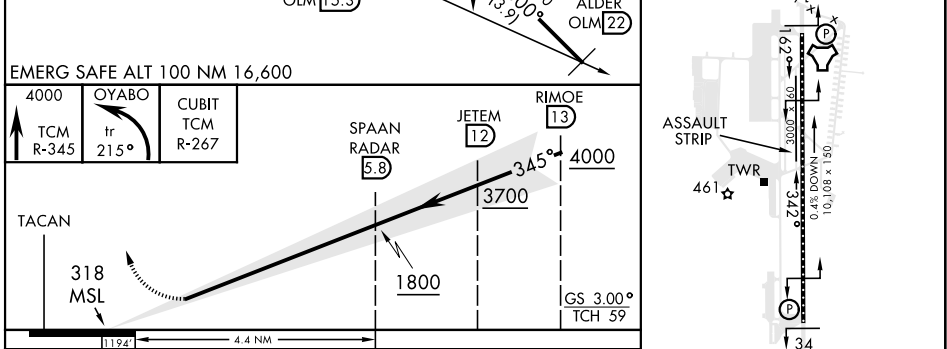
AL-414 [USAF]

ALSF-2 MISSED APPROACH: Climb to 4000 on TCM TACAN R-345 to OYABO, then turn left via 215° course to intercept TCM R-267 to CUBIT and hold, continue climb in hold to 4000. Cross OYABO at or above 3000.

ATIS 135.825 270.1	SEATTLE APP CON 126.5 377.15	TOWER 124.8 259.3	GND CON 118.175 279.65
------------------------------	--	-----------------------------	----------------------------------



ELEV 322	A1	TDZE 322
----------	-----------	----------



CATEGORY	A	B	C	D	E	HIRL Rwy 16-34	TDZL/CL Rwy 34
S-ILS 34	RA 139/12		100	DA 422			

TACOMA, WASHINGTON 47°08'N-122°29'W MCCORD FLD (KTCM)

Amdt 4 10SEP20

ILS RWY 34 (CAT II)

NW-1, 31 OCT 2024 to 28 NOV 2024

NW-1, 31 OCT 2024 to 28 NOV 2024