

LOC I-MAR 109.9	APCH CRS 165°	Rwy Idg 10,108 TDZE 286 Arpt Elev 322
---------------------------	-------------------------	--

AL-414 [USAF]

MCCHORD FLD (KTCM)

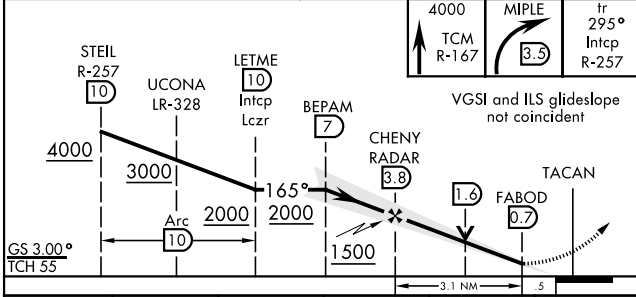
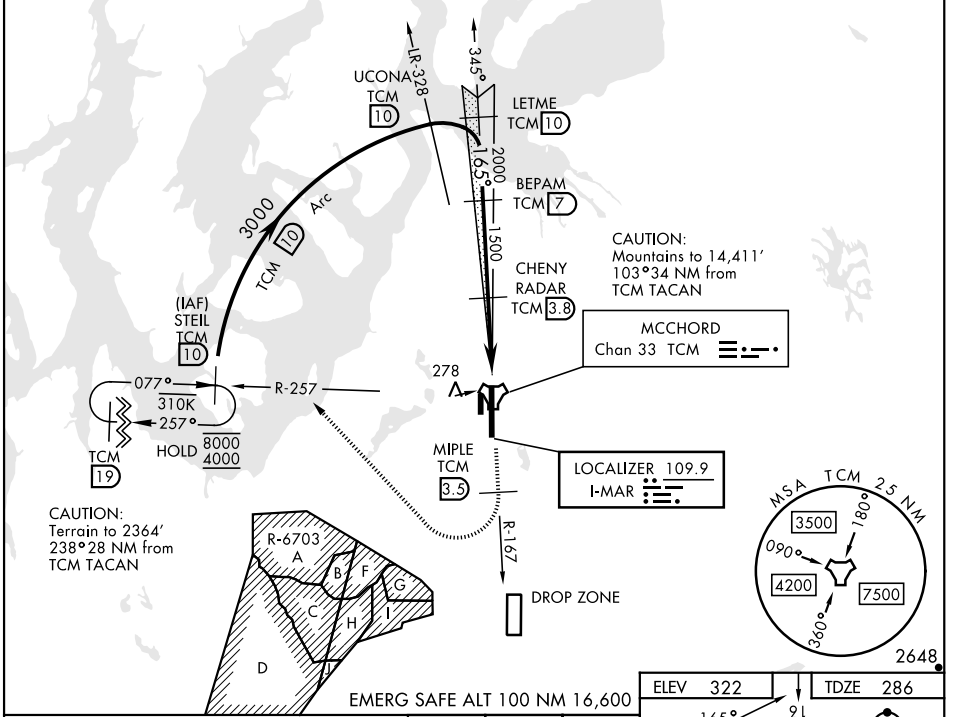
RADAR or DME required.

▼ * When ALS inop, increase RVR to 45, vis to 7/8 mile.
 ** When ALS inop, increase CAT AB RVR to 55, vis to 1 mile, CAT CDE vis to 1 1/8 miles.
 *** Circling not authorized E of Rwy 16-34.

ALSF-1 (A1)

MISSED APPROACH: Climb to 4000 on TCM TACAN R-167. At 3.5 DME turn right via 295° course to intercept TCM R-257 to STEL and hold. Continue climb in hold to 4000.

ATIS 135.825 270.1	SEATTLE APP CON 126.5 377.15	TOWER 124.8 259.3	GND CON 118.175 279.65
------------------------------	--	-----------------------------	----------------------------------



ELEV 322	TDZE 286
----------	----------

ASSAULT STRIP, TWR, 461, 342, 91, TDZL/CL Rwy 34, HIRL Rwy 16-34. FAF to MAP 3.1 NM.

Knots	60	90	120	150	180
Min:Sec	3:06	2:04	1:33	1:14	1:02

CATEGORY	A	B	C	D	E
S-ILS 16*	601/40		315	(300-3/4)	
S-LOC 16**	860/40	574 (600-3/4)	860-1 1/4	574	(600-1 1/4)
***	940-1	618 (700-1)	940-1 3/4	940-2	1020-2 1/2
CIRCLING	940-1	618 (700-1)	618 (700-1 3/4)	618 (700-2)	698 (700-2 1/2)

NW-1, 31 OCT 2024 to 28 NOV 2024

NW-1, 31 OCT 2024 to 28 NOV 2024