

ATIS  
 135.825 270.1  
 GND CON  
 118.175 279.65  
 TOWER  
 124.8 259.3  
 SEATTLE DEP CON  
 126.5 377.15

If unable to make ATC charted crossing restriction advise ATC prior to departure.

### RADAR REQUIRED

Maximum 250 KIAS

Radar vectors required within 10 NM after departure.

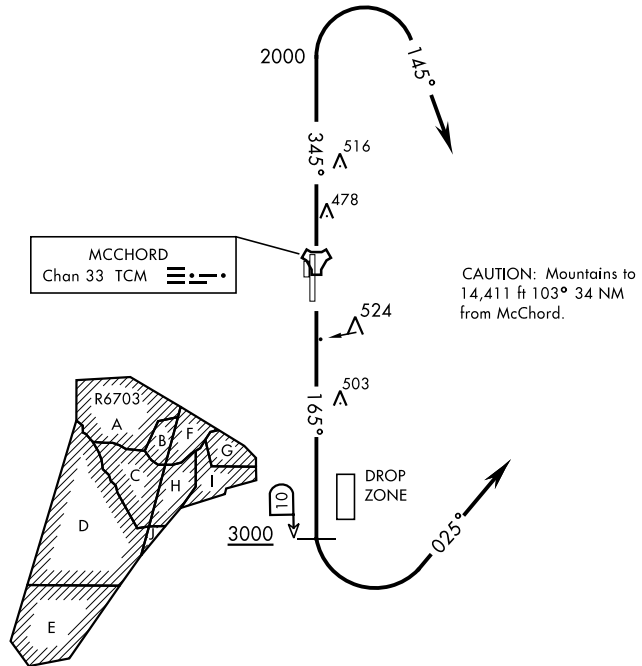


SEATTLE  
 116.8 SEA   
 Chan 115

L-1

NW-1, 31 OCT 2024 to 28 NOV 2024

NW-1, 31 OCT 2024 to 28 NOV 2024



CAUTION: Mountains to 14,411 ft 103° 34 NM from McChord.



#### DEPARTURE ROUTE DESCRIPTION

**TAKEOFF RWY 16:** Climb on track 165° to cross TCM TACAN 10 DME at or above 3000. Then turn left tracking 025° to expect radar vectors. Maintain ATC assigned altitude.

**TAKEOFF RWY 34:** Climb on track 165° to cross TCM TACAN 10 DME at or above 3000. Then turn right tracking 145° to expect radar vectors. Maintain ATC assigned altitude.