

TACOMA, WASHINGTON

TACAN RWY 34

MCCHORD FLD (KTCM)

TACAN TCM Chan 33	APCH CRS 347°	Rwy Ldg TDZE Arpt Elev 10,108 322 322
--------------------------	----------------------	--

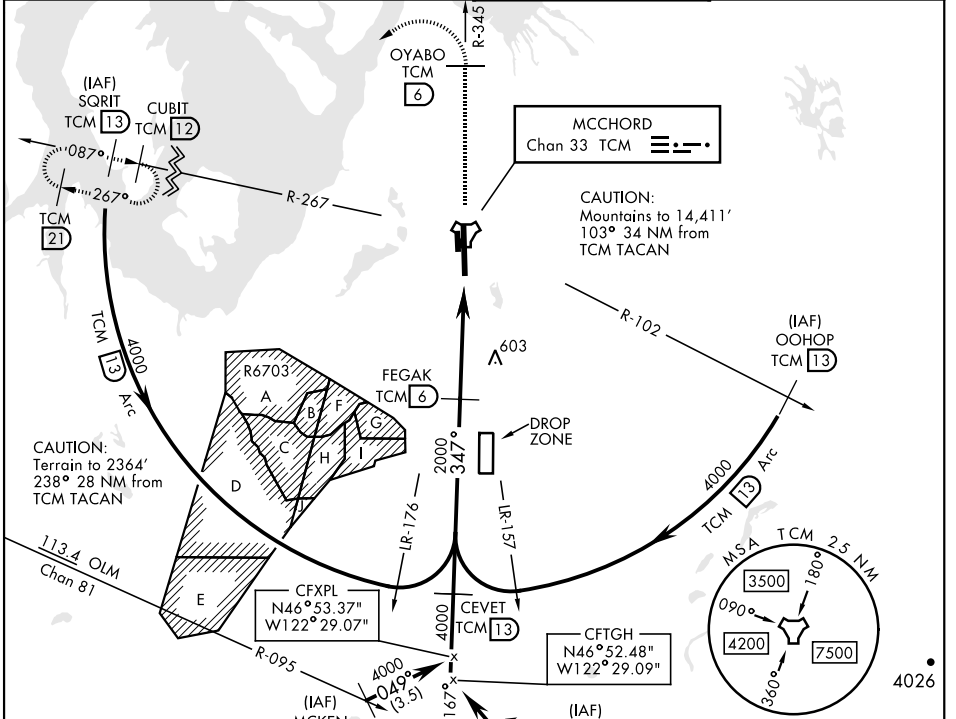
AL-414 [USAF]

▼ * When ALS inop, increase CAT AB RVR to 55, vis to 1 mile, CAT CD vis to 1½ miles.
 ** Circling not authorized E of Rwy 16-34.

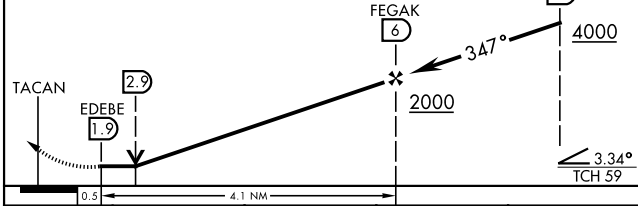
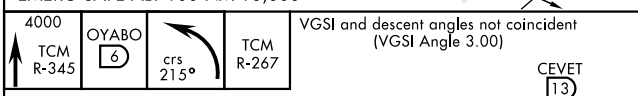
ALSF-2

MISSED APPROACH: Climb to 4000 on TCM TACAN R-345 to OYABO, then turn left via 215° course to intercept TCM R-267 to CUBIT and hold. Cross OYABO at or above 3000. Continue climb-in-hold to 4000.

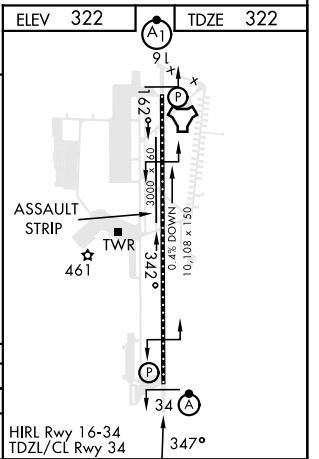
ATIS 135.825 270.1	SEATTLE APP CON 126.5 377.15	TOWER 124.8 259.3	GND CON 118.175 279.65
------------------------------	--	-----------------------------	----------------------------------



ELEV 322	TDZE 322
----------	----------



CATEGORY	A	B	C	D
S-34*	860/24	538 (600-½)	860/55	538 (600-1)
CIRCLING**	940-1	618 (700-1)	940-1½ 618 (700-1½)	940-2 618 (700-2)



TACOMA, WASHINGTON 47°08'N-122°29'W MCCHORD FLD (KTCM)

Amtd 5 20APR23

TACAN RWY 34

NW-1, 31 OCT 2024 to 28 NOV 2024

NW-1, 31 OCT 2024 to 28 NOV 2024