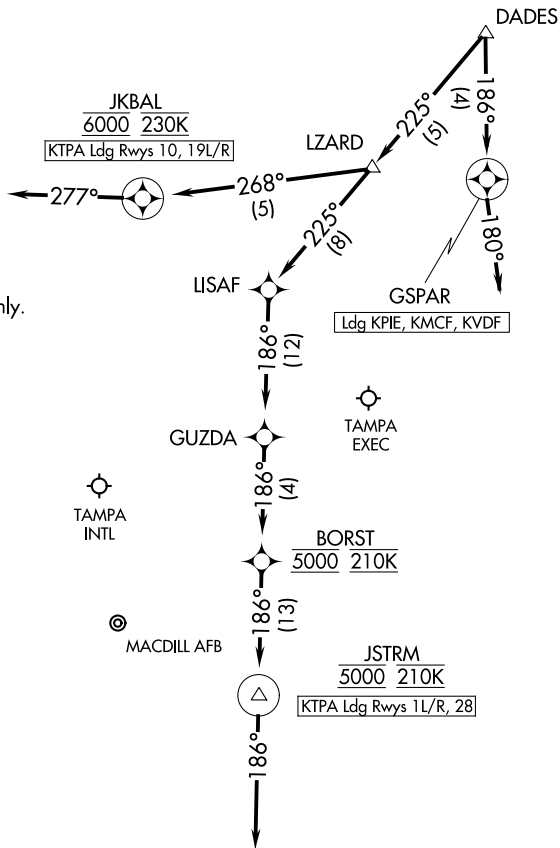


TAMPA APP CON
135.5 279.6
KMCF ATIS
133.825 270.1
PIE ATIS
134.5
TPA D-ATIS
126.45
VDF AWOS-3
121.125

RNAV 1- DME/DME/IRU or GPS.

RADAR required.



NOTE: Jet and turboprop aircraft only.

ST PETE-
CLEARWATER INTL

TAMPA
INTL

MACDILL AFB

TAMPA
EXEC

Ldg KPIE, KMCF, KVDF

BORST
5000 210K

JSTRM
5000 210K
[KTPA Ldg Rwy 1L/R, 28]

NOTE: Chart not to scale.

ARRIVAL ROUTE DESCRIPTION

LANDING KTPA RUNWAYS 1L/R, 28: From DADES on track 225° to LZARD, then on track 225° to LISAF, then on track 186° to GUZDA, then on track 186° to cross BORST at 5000 and at 210K, then on track 186° to cross JSTRM at 5000 and at 210K, then on track 186°.
Expect RADAR vectors to final approach course.

LANDING KTPA RUNWAYS 10, 19L/R: From DADES on track 225° to LZARD, then on track 268° to cross JKBAL at 6000 and at 230K, then on track 277°.
Expect RADAR vectors to final approach course.

LANDING KPIE/KMCF/KVDF: From DADES on track 186° to GSPAR, then on track 180°.
Expect RADAR vectors to final approach course.