

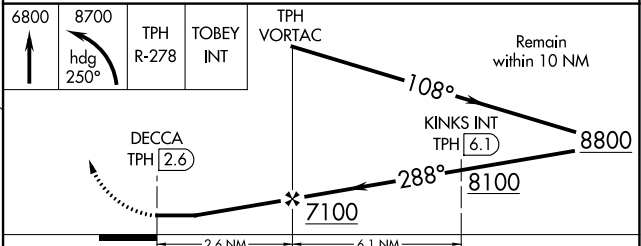
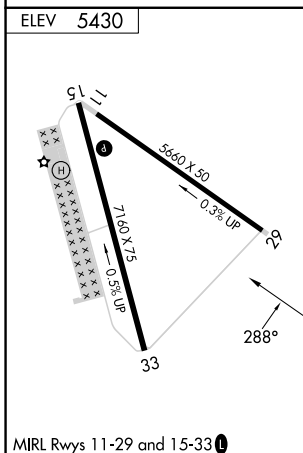
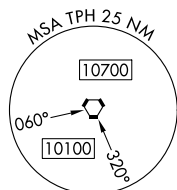
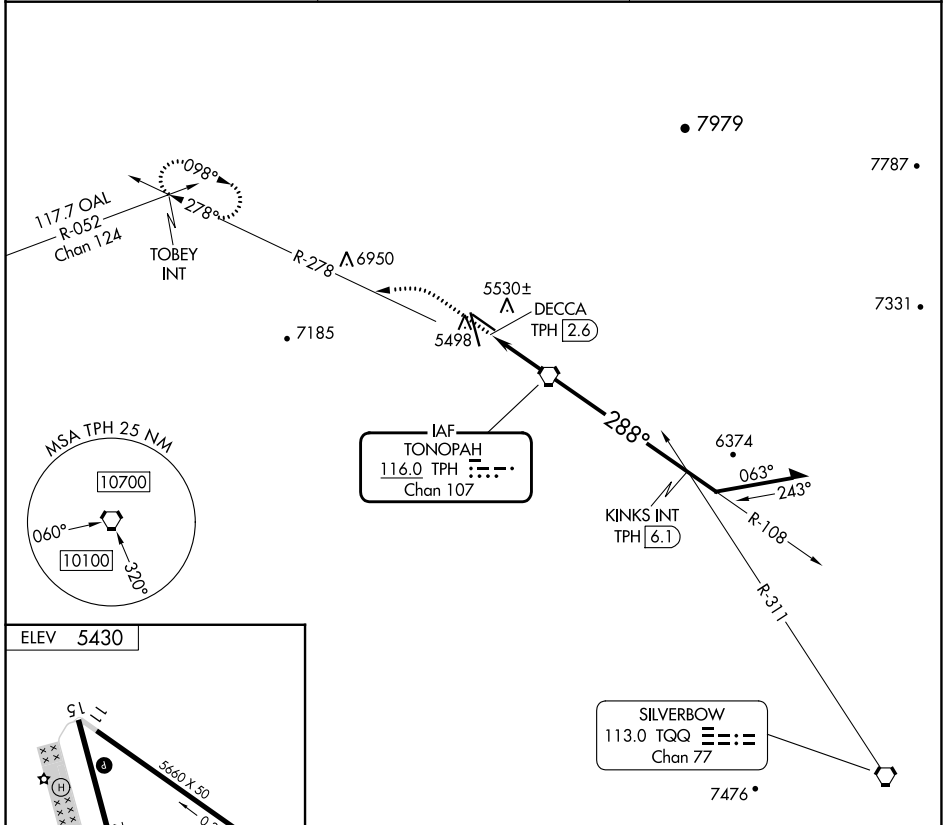
VORTAC TPH 116.0 Chan 107	APP CRS 288°	Rwy Idg TDZE N/A N/A Apt Elev 5430
---	------------------------	--

VOR-A TONOPAH (TPH)

⚠ Circling Rwy 11 NA at night. When local altimeter setting not received, procedure NA. Circling NA for Cat D southwest of Rwy 15-33.

MISSED APPROACH: Climb to 6800 then climbing left turn to 8700 on heading 250° and on TPH VORTAC R-278 to TOBEY INT and hold.

ASOS 118.875	NELLIS APP CON 119.35 254.4	UNICOM 123.0 (CTAF) 📻
------------------------	---------------------------------------	--



MIRL Rws 11-29 and 15-33 📻		FAF to MAP 2.6 NM			
Knots	60	90	120	150	180
Min:Sec	2:36	1:44	1:18	1:02	0:52
CATEGORY	A	B	C	D	
CIRCLING	6640-1¼ 1210 (1300-1¼)	6640-1½ 1210 (1300-1½)	6640-3	1210 (1300-3)	

SW-4, 31 OCT 2024 to 28 NOV 2024

SW-4, 31 OCT 2024 to 28 NOV 2024