

WAAS CH <b>61311</b> <b>W04A</b>	APP CRS <b>043°</b>	Rwy ldg TDZE <b>24</b> Apt Elev <b>24</b>	<b>4974</b>
--	------------------------	---	-------------

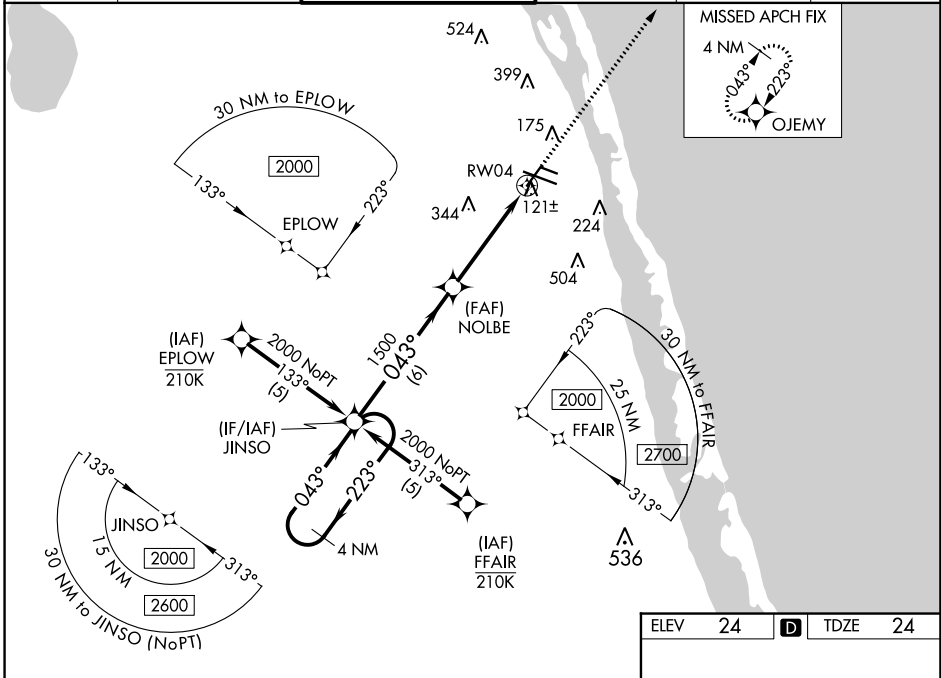
# RNAV (GPS) RWY 4

VERO BEACH RGNL (VRB)

**⚠** Circling to Rwy 30R NA at night. For uncompensated Baro-VNAV systems, LNAV/VNAV NA below 0°C (32°F) or above 54°C (130°F). DME/DME RNP-0.3 NA. When local altimeter setting not received, use Fort Pierce altimeter setting and increase LPV DA to 320 feet; increase LNAV/VNAV DA to 378 feet and all visibilities 1/8 SM; increase all MDAs 40 feet and LNAV Cat C/D and Circling Cat C/D visibility 1/4 SM. Baro-VNAV and VDP NA when using Fort Pierce altimeter setting. Rwy 4 helicopter visibility reduction below 3/4 SM NA.

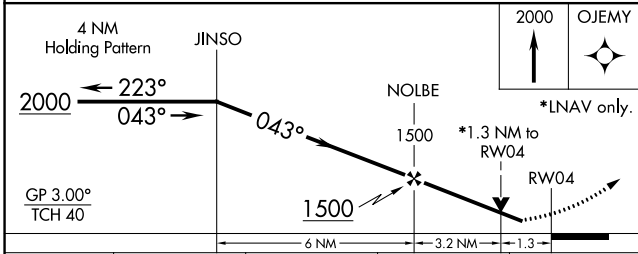
**MISSED APPROACH:**  
Climb to 2000 direct OJEMY and hold.

ATIS <b>120.575</b>	PALM BEACH APP CON <b>123.625 225.4 (N)</b>	VERO BEACH TOWER * <b>126.3 (CTAF) 0</b>	GND CON <b>127.45</b>	CLNC DEL <b>134.975</b>	UNICOM <b>122.95</b>
------------------------	--	---	--------------------------	----------------------------	-------------------------

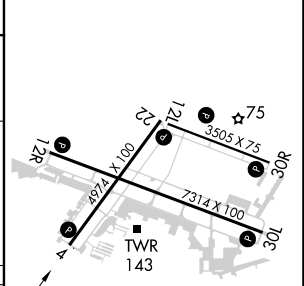


SE-3, 31 OCT 2024 to 28 NOV 2024

SE-3, 31 OCT 2024 to 28 NOV 2024



ELEV 24	<b>D</b>	TDZE 24
---------	----------	---------



CATEGORY	A	B	C	D
LPV DA	297-7/8		273 (300-7/8)	
LNAV/VNAV DA	355-1/8		331 (400-1/8)	
LNAV MDA	480-1	456 (500-1)	480-13/8	456 (500-13/8)
CIRCLING	560-1	536 (600-1)	660-13/4	820-2/2 636 (700-13/4) 796 (800-2/2)

MIRL Rwy 4-22, 12R-30L, and 12L-30R **0**  
 REIL Rwy 4, 12R, 22 and 30L **0**