

# HI-TACAN Z RWY 15

TACAN WRB Chan <b>10</b>	APCH CRS <b>143°</b>	Rwy Idg <b>12,001</b> TDZE <b>294</b> Arprt Elev <b>294</b>
-----------------------------	-------------------------	---

[USAF]

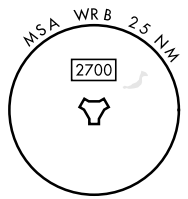
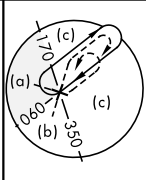
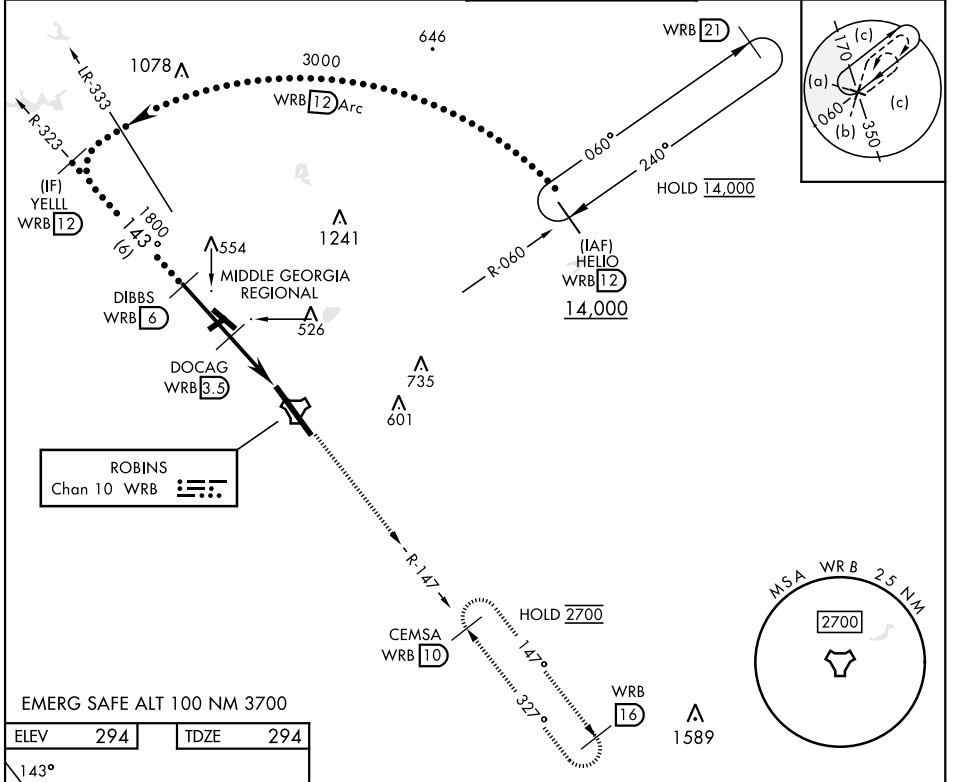
ROBINS AFB (KWRB)

\* When ALS inop, increase CAT CDE vis to 1 1/2 miles.  
 \*\* Circling not authorized SW of Rwy 15-33.



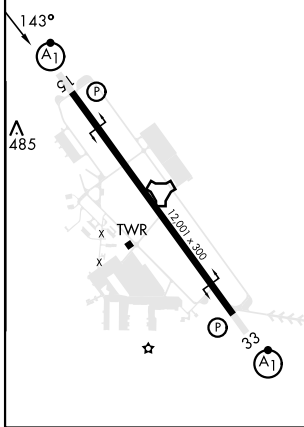
MISSED APPROACH: Climb to 2700 on WRB TACAN R-147 to CEMSA and hold.

ATIS <b>119.475 273.475</b>	ATLANTA APP CON <b>124.2 279.6</b>	TOWER <b>133.225 257.975</b>	GND CON <b>121.85 275.8</b>
--------------------------------	---------------------------------------	---------------------------------	--------------------------------



EMERG SAFE ALT 100 NM 3700

ELEV 294	TDZE 294
----------	----------



	2700 WRB R-147	CEMSA WRB 10	
CATEGORY	C	D	E
S-15*	820/55	526	(600-1)
CIRCLING**	880-1 1/2 586 (600-1 1/2)	960-2 666 (700-2)	1040-2 3/4 746 (800-2 3/4)

# HI-TACAN Z RWY 15

SE-4, 31 OCT 2024 to 28 NOV 2024

SE-4, 31 OCT 2024 to 28 NOV 2024