

# TACAN Y RWY 15

TACAN Chan <b>10</b>	WRB	APCH CRS <b>143°</b>	Rwy Ildg <b>12,001</b> TDZE <b>294</b> Arprt Elev <b>294</b>
-------------------------	-----	-------------------------	--

[USAF]

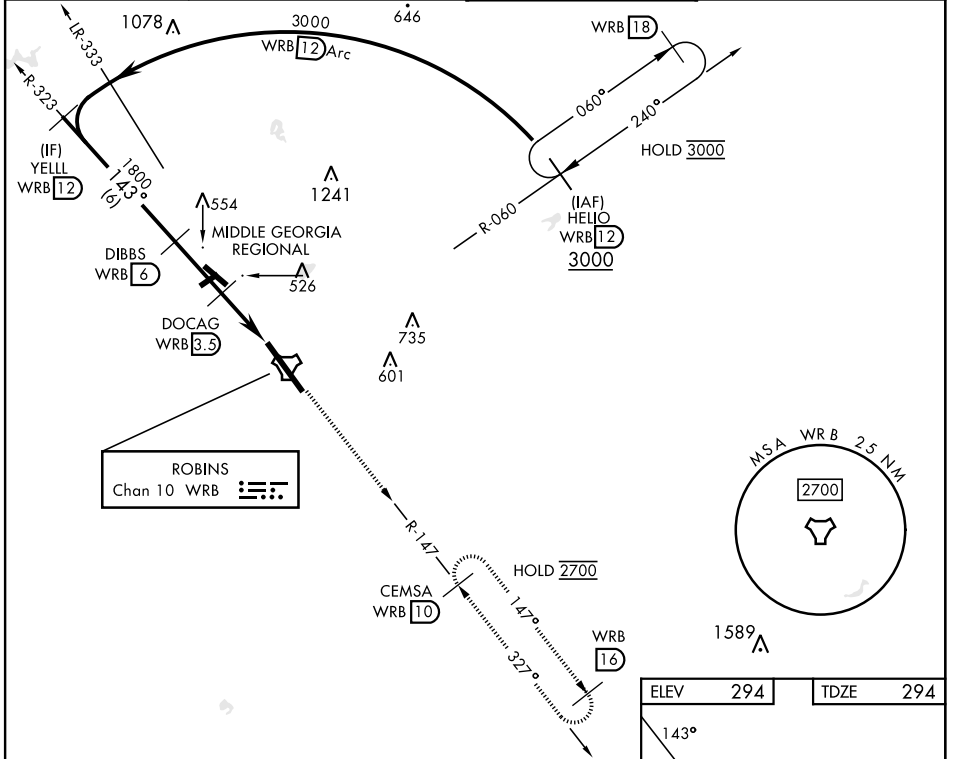
ROBINS AFB (KWRB)

\*When ALS inop, increase CAT AB RVR to 55, vis to 1 mile; CAT CDE vis to 1 1/2 miles.  
 \*\*Circling not authorized SW of Rwy 15-33.

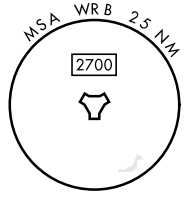


MISSED APPROACH: Climb To 2700 on WRB TACAN R-147 to CEMSA and hold.

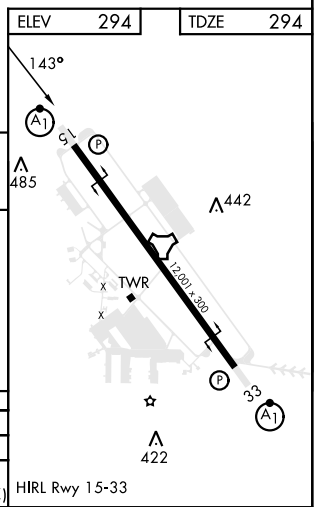
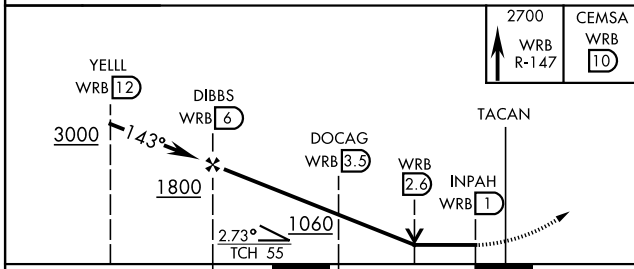
ATIS <b>119.475 273.475</b>	ATLANTA APP CON <b>124.2 279.6</b>	TOWER <b>133.225 257.975</b>	GND CON <b>121.85 275.8</b>
--------------------------------	---------------------------------------	---------------------------------	--------------------------------



ROBINS  
Chan 10 WRB



EMERG SAFE ALT 100 NM 3700



CATEGORY	A	B	C	D	E
S-15*	820/24	526 (600-1/2)	820/55	526 (600-1)	
CIRCLING**	820-1	526 (600-1)	880-1 1/2 586 (600-1 1/2)	960-2 666 (700-2)	1040-2 3/4 746 (800-2 3/4)

HIRL Rwy 15-33

# TACAN Y RWY 15

SE-4, 31 OCT 2024 to 28 NOV 2024

SE-4, 31 OCT 2024 to 28 NOV 2024