

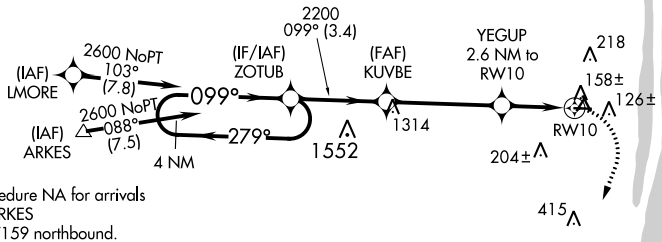
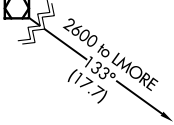
| | | |
|-------------|----------|-----------|
| APP CRS | Rwy Idg | NA |
| 099° | TDZE | NA |
| | Apt Elev | 14 |

RNAV (GPS)-A

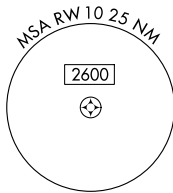
PALM BEACH COUNTY PARK (L.N.A)

| | | | |
|--|---|---|---------------------------------|
| <p>▼ DME/DME RNP-0.3 NA. Rwy 10 helicopter visibility reduction below ¼ SM NA. Circling to Rwy's 4, 16, 22, 28, 34 NA at night.</p> | | <p>MISSED APPROACH: (Do not exceed 210K until turn completion) Climbing right turn to 2000 direct UGLEE and hold.</p> | |
| AWOS-3PT 119.925 | PALM BEACH APP CON 127.35 343.6 | CLNC DEL 127.35 | UNICOM 122.7 (CTAF) 0 |

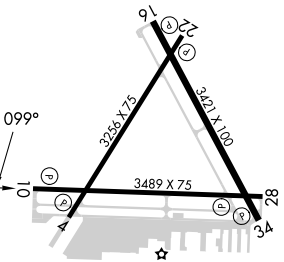
PAHOKEE PHK
Procedure NA for arrival on PHK VOR/DME airway radials 115 CW 211.



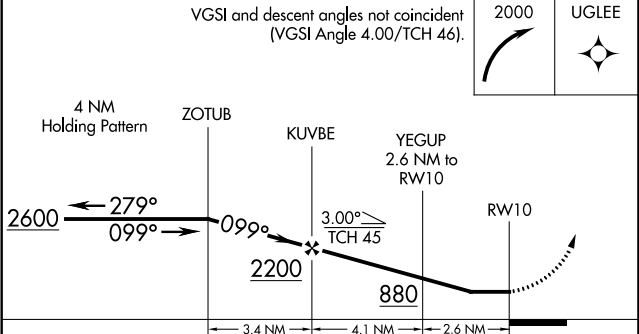
Procedure NA for arrivals at ARKES on V159 northbound.



ELEV **14**



VGSI and descent angles not coincident (VGSI Angle 4.00/TCH 46).



| CATEGORY | A | B | C | D |
|-------------------|----------------------|----------------------|------------------------|----|
| ☐ CIRCLING | 460-1 446 (500-1) | 520-1 506 (600-1) | 580-1½ 566 (600-1½) | NA |