

RNAV (RNP) Z RWY 28R

PALM BEACH INTL (PBI)

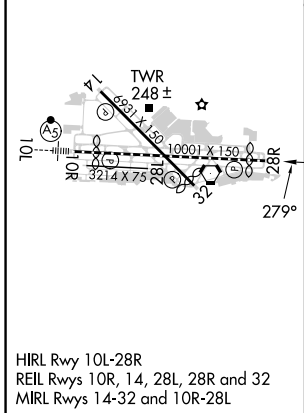
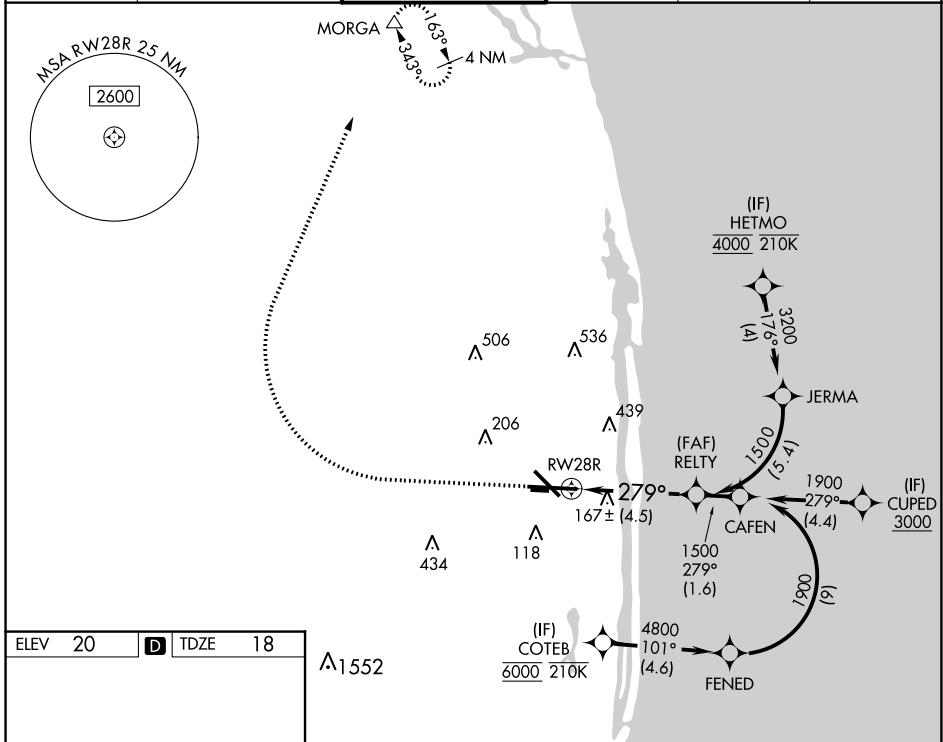
APP CRS 279°	Rwy Idg 8240
	TDZE 18
	Apt Elev 20

RNP AR APCH - GPS.

▼ For uncompensated Baro-VNAV systems, procedure NA below 6°C or above 54°C.

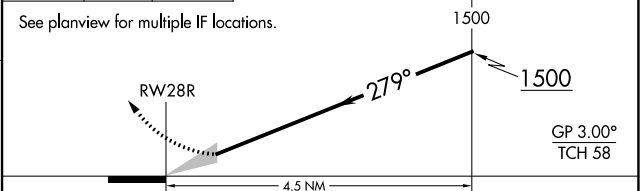
MISSED APPROACH: Climb to 500 then climbing right turn to 3000 direct MORGA and hold.

D-ATIS 123.75	PALM BEACH APP CON 128.3 317.4	PALM BEACH TOWER 119.1 257.8	GND CON 121.9 284.6	CLNC DEL 121.6 284.6	CPDLC
-------------------------	--	--	-------------------------------	--------------------------------	-------



500 3000 MORGA

 VGSJ and RNAV glidepath not coincident (VGSJ Angle 3.00°/TCH 70).



CATEGORY	A	B	C	D
RNP 0.30 DA	404/60 386 (400-1¼)			

AUTHORIZATION REQUIRED

SE-3, 31 OCT 2024 to 28 NOV 2024

SE-3, 31 OCT 2024 to 28 NOV 2024