

TBIRD SIX DEPARTURE (RNAV) Departure Routes

PALM BEACH DEP CON
128.3 317.4
D-ATIS
123.75
CLNC DEL
121.6 284.6
CPDLC
GND CON
121.9 284.6
PALM BEACH TOWER
119.1 257.8

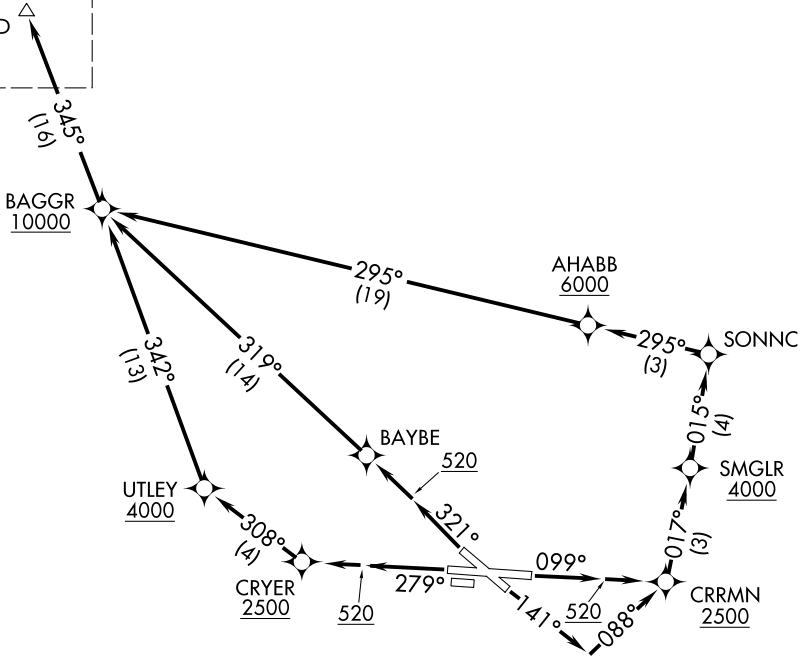
RNAV 1 - DME/DME/IRU or GPS.

RADAR required for non-GPS
equipped aircraft.

**TOP ALTITUDE:
11000**

See following
page for
transition routes.

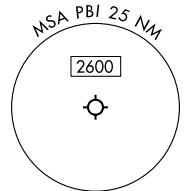
TBIRD 



TAKEOFF MINIMUMS

Rwys 10L, 14, 28R, 32: Standard with
minimum climb of 500'/NM to 520.

- NOTE: Jets aircraft only.
- NOTE: CHEFS Transition, for use by MCO or DAB area arrivals.
- NOTE: All aircraft: Climb gradients: If unable to accept climb rate advise ATC prior to departure.
- NOTE: MATLK Transition for use by aircraft filed to Jacksonville area airports only, or as assigned by ATC.



NOTE: Chart not to scale.

(CONTINUED ON FOLLOWING PAGE)