

OAK HARBOR, WASHINGTON

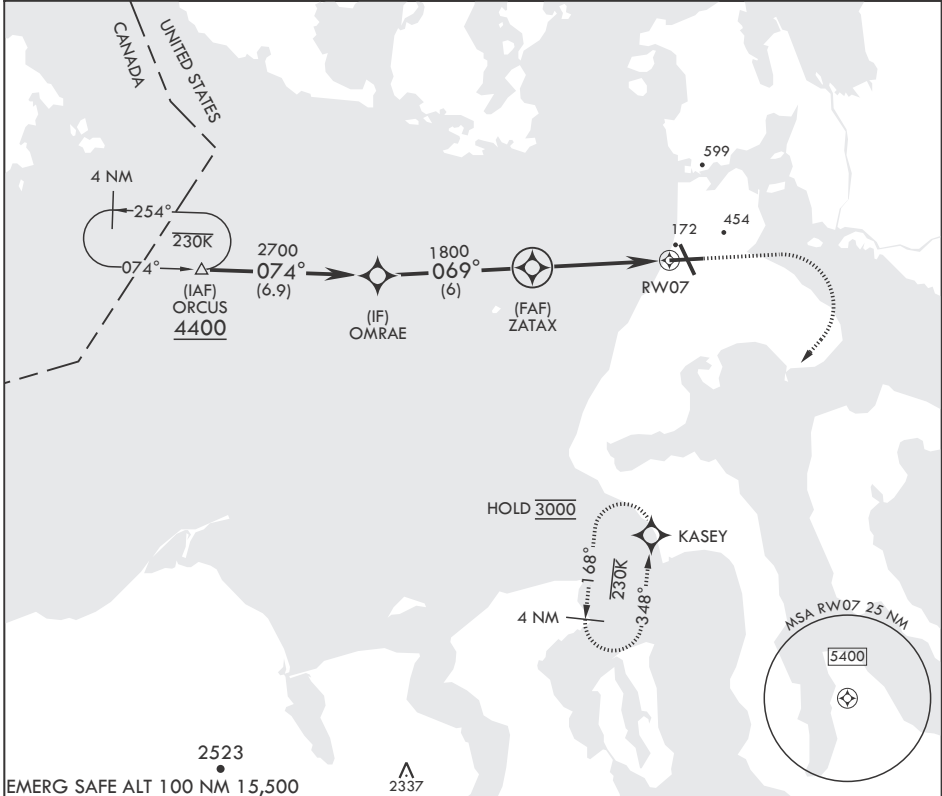
RNAV (GPS) RWY 7

APCH CRS	Rwy Idg	8000
069°	TDZE	25
	Arprt Elev	47

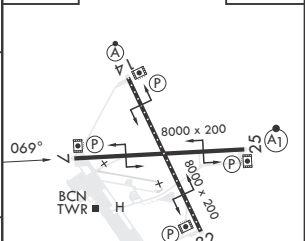
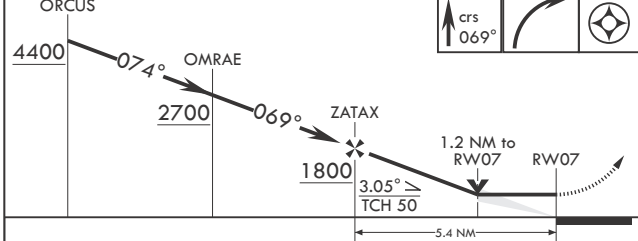
- (USN) WHIDBEY ISLAND NAS (AULT FLD) (KNUW)

RNP APCH MISSED APPROACH: Climb to 1500, then climbing right turn to 3000 direct KASEY and hold. Do not exceed 230 KIAS until turn completion.

ATIS 134.15 281.5	APP CON/DEP CON 118.2 285.65 (W) 120.7 270.8 (E)	TOWER 127.9 340.2	GND CON 121.75 336.4	CLNC DEL 135.1 379.9	ASR/PAR
----------------------	--	----------------------	-------------------------	-------------------------	---------



EMERG SAFE ALT 100 NM 15,500 ▲ 2337 1500 3000 KASEY ELEV 47 TDZE 25



CATEGORY	A	B	C	D	E
LNAV MDA	440/55	415 (400-1)	440/60	415	(400-1½)
C CIRCLING	760-1	713 (800-1)	860-2½ 813 (900-2½)	900-2¾ 853 (900-2¾)	1200-3 1153 (1200-3)

HIRL all Rwys
TDZL/CL Rwy 14

OAK HARBOR, WASHINGTON

48°21'N - 122°39'W

WHIDBEY ISLAND NAS (AULT FLD) (KNUW)

Amdt 2 31OCT24

RNAV (GPS) RWY 7

NW-1, 31 OCT 2024 to 28 NOV 2024

NW-1, 31 OCT 2024 to 28 NOV 2024