

OAK HARBOR, WASHINGTON

# TACAN Y RWY 7

TACAN Chan <b>85</b>	APCH CRS <b>058°</b>	Rwy ldg TDZE <b>25</b> Arprt Elev <b>47</b>
-------------------------	-------------------------	---

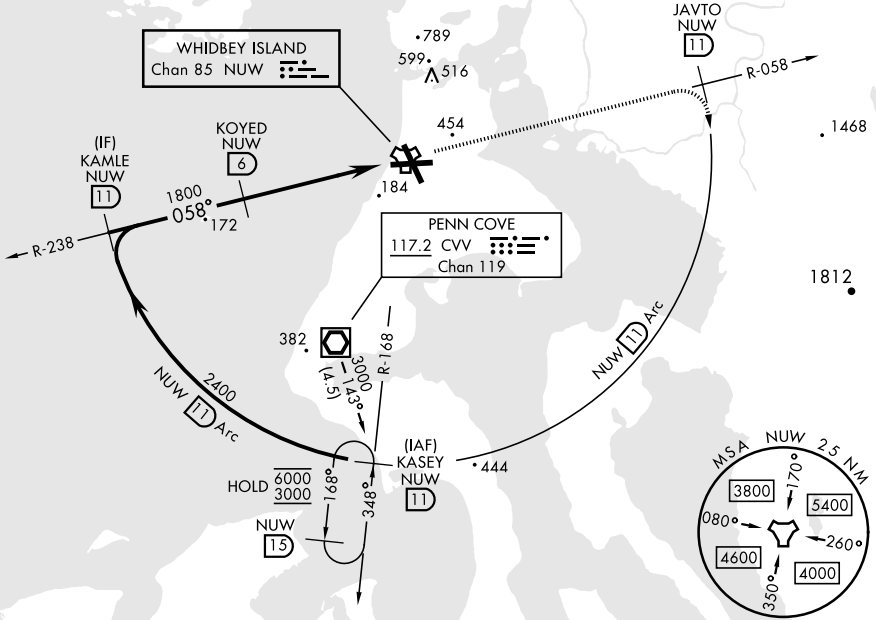
[USN]

WHIDBEY ISLAND NAS (AULT FLD) (KNUW)

▼ MISSED APPROACH: Climb to 3000 via NUW TACAN R-058 to JAVTO, then arc SE of NUW via 11 DME Arc to KASEY and hold.

ATIS <b>134.15 281.5</b>	WHIDBEY APP CON <b>120.7 270.8 (E)</b> <b>118.2 285.65 (W)</b>	WHIDBEY TOWER <b>127.9 340.2</b>	GND CON <b>121.75 336.4</b>	CLNC DEL <b>135.1 379.9</b>	ASR/PAR
-----------------------------	--	-------------------------------------	--------------------------------	--------------------------------	---------

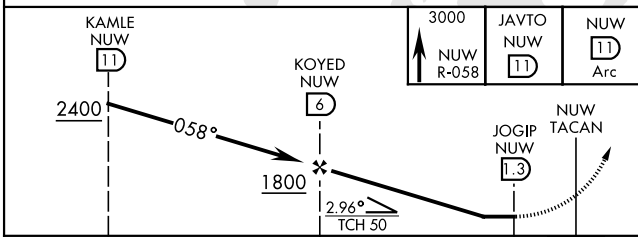
CAUTION: CAT CDE intmed seg length 5 NM



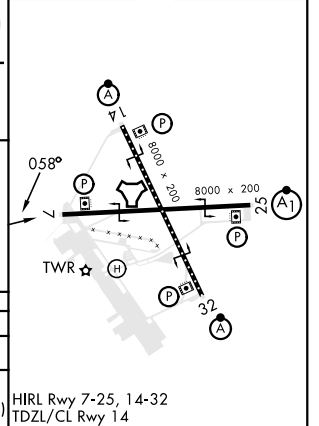
NW-1, 31 OCT 2024 to 28 NOV 2024

NW-1, 31 OCT 2024 to 28 NOV 2024

EMERG SAFE ALT 100 NM 15,500



ELEV	47	TDZE	25
------	----	------	----



CATEGORY	A	B	C	D	E
S-7	440/55 415 (400-1)		440/60 415 (400-1½)		
CIRCLING	760-1 713 (800-1)		860-2½ 813 (900-2½)	900-2¾ 853 (900-2¾)	1200-3 1153 (1200-3)

HIRL Rwy 7-25, 14-32 TDZL/CL Rwy 14

OAK HARBOR, WASHINGTON

48°21'N-122°39'W

WHIDBEY ISLAND NAS (AULT FLD) (KNUW)

Amdt 4 31OCT24

# TACAN Y RWY 7