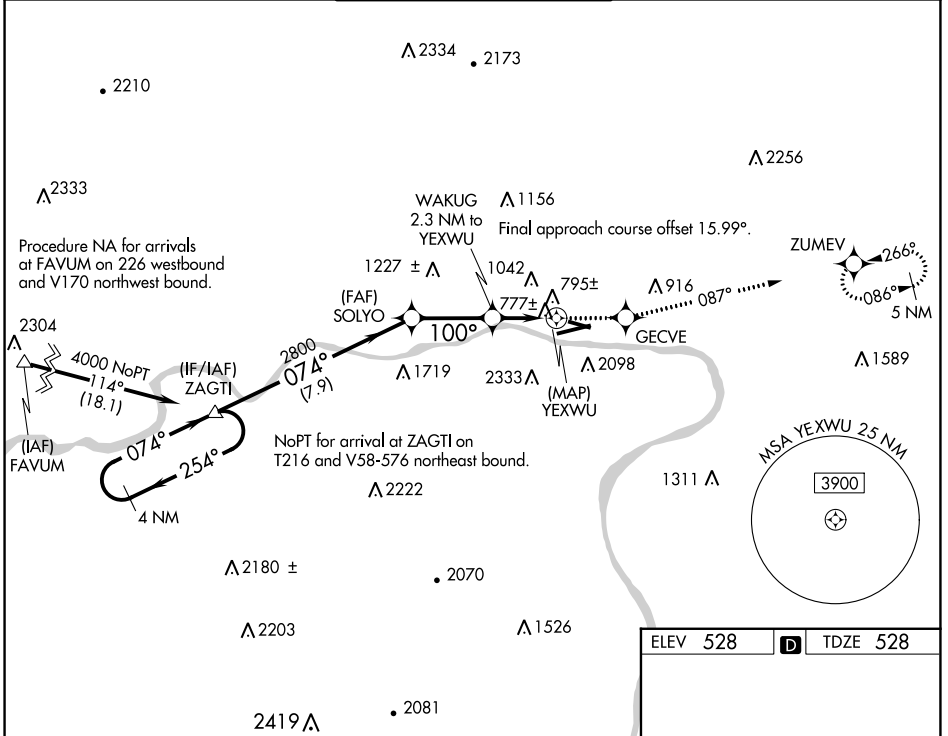


WAAS CH <b>49024</b> <b>W12A</b>	APP CRS <b>100°</b>	Rwy ldg <b>4273</b> TDZE <b>528</b> Apt Elev <b>528</b>
--	------------------------	---

# RNAV (GPS) RWY 12

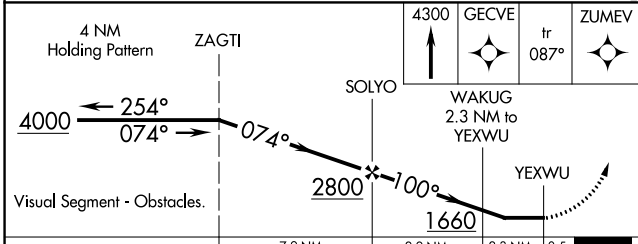
WILLIAMSPORT RGNL (IPT)

<p><b>▼</b> Rwy 12 helicopter visibility reduction below 1 SM NA. DME/DME RNP-0.3 NA. Straight-in Rwy 12 NA at night, Circling Rwy 12, 30 NA at night. Circling NA south of Rwy 9 and southwest of Rwy 30.</p>		<p>MISSED APPROACH: Climb to 4300 direct GECVE then on track 087° to ZUMEV and hold, continue climb-in-hold to 4300.</p>		
ASOS <b>125.225</b>	NEW YORK CENTER <b>124.9</b>	WILLIAMSPORT TOWER ★ <b>119.1 (CTAF) 257.8</b>	GND CON <b>121.9</b>	UNICOM <b>122.95</b>



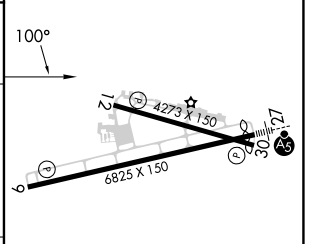
NE-4, 31 OCT 2024 to 28 NOV 2024

NE-4, 31 OCT 2024 to 28 NOV 2024



ELEV 528	<b>D</b>	TDZE 528
----------	----------	----------

CATEGORY	A	B	C	D
LP MDA	1100-1	572 (600-1)		NA
LNAV MDA	1380-1 852 (900-1)	1380-1¼ 852 (900-1¼)		NA
<b>C</b> CIRCLING	1380-1¼ 852 (900-1¼)	1500-1½ 972 (1000-1½)		NA



REIL Rwy 9 **1**  
MIRL Rwy 12-30 **1**  
HIRL Rwy 9-27 **1**