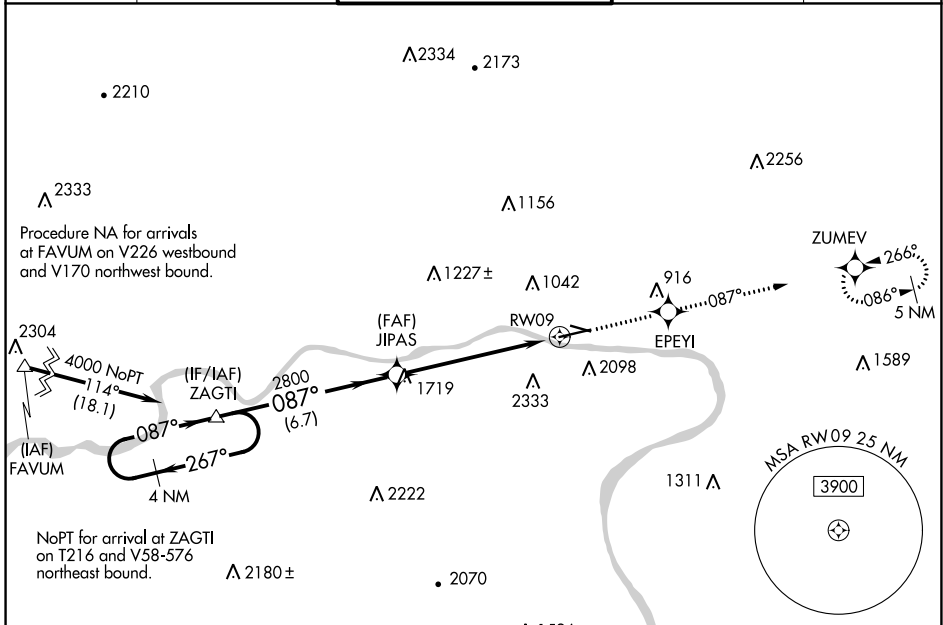


WAAS CH 86924 W09A	APP CRS 087°	Rwy ldg 6073 TDZE 521 Apt Elev 528
--	------------------------	---

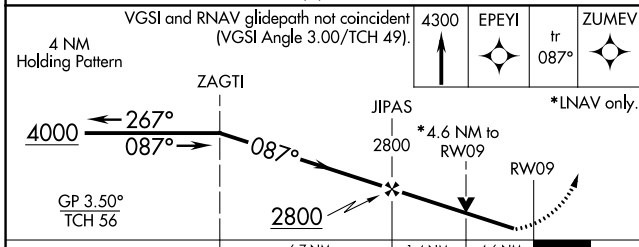
RNAV (GPS) RWY 9

WILLIAMSPORT RGNL (IPT)

DME/DME RNP-0.3 NA. Circling Rwy 12, 30 NA at night. Circling NA south of Rwy 9 and southwest of Rwy 30. Rwy 9 helicopter visibility reduction below 3/4 SM NA.		MISSED APPROACH: Climb to 4300 direct EPEYI and on track 087° to ZUMEV and hold, continue climb-in-hold to 4300.		
ASOS 125.225	NEW YORK CENTER 124.9	WILLIAMSPORT TOWER ★ 119.1 (CTAF) 257.8	GND CON 121.9	UNICOM 122.95

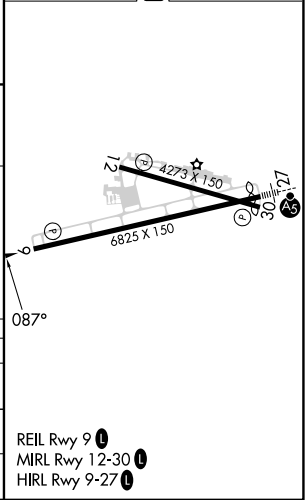


NoPT for arrival at ZAGTI on T216 and V58-576 northeast bound.			
Procedure NA for arrivals at FAVUM on V226 westbound and V170 northwest bound.			



ELEV 528		TDZE 521
----------	--	----------

CATEGORY	A	B	C	D
LPV DA	1036-1½ 515 (600-1½)			NA
RNAV MDA	2040-1¼ 1519 (1600-1¼)	2040-1½ 1519 (1600-1½)	2040-3 1519 (1600-3)	NA
CIRCLING	2040-1¼ 1512 (1600-1¼)	2040-1½ 1512 (1600-1½)	2040-3 1512 (1600-3)	NA



NE-4, 31 OCT 2024 to 28 NOV 2024

NE-4, 31 OCT 2024 to 28 NOV 2024