

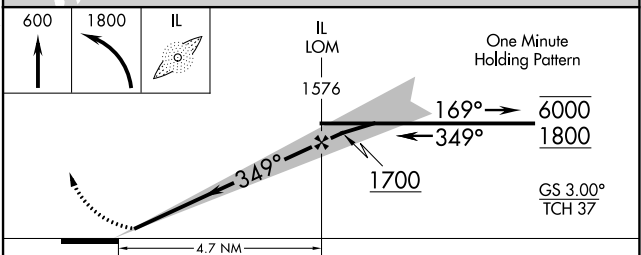
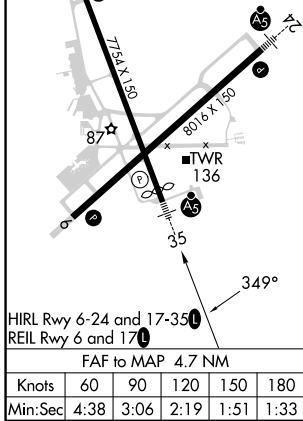
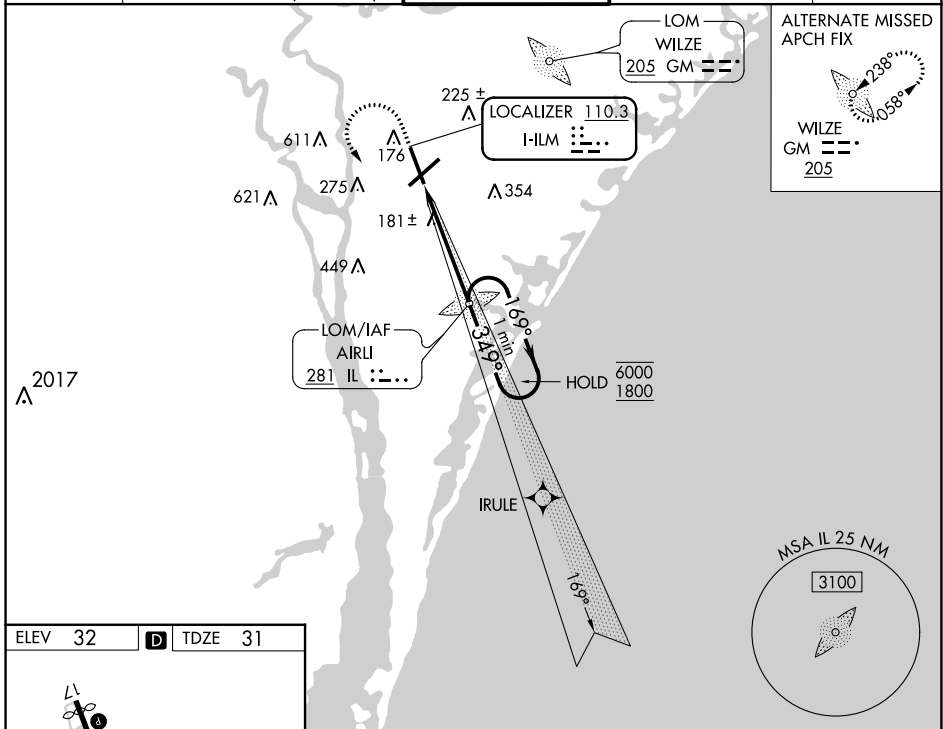
LOC I-ILM 110.3	APP CRS 349°	Rwy Idg TDZE Apt Elev	7204 31 32
---------------------------	------------------------	-----------------------------	---------------------------------------

ILS Y or LOC RWY 35

WILMINGTON INTL (ILM)

ADF required. RADAR required for procedure entry.		MALSR 	MISSED APPROACH: Climb to 600 then climbing left turn to 1800 direct AIRLI LOM and hold.
For inop ALS, increase S-LOC 35 Cat C/D visibility to 1 1/2 SM.			

ATIS 124.975	WILMINGTON APP CON ★ 118.25 284.65 (164°-343°) 135.75 317.425 (344°-163°)	WILMINGTON TOWER ★ 119.9 (CTAF) 239.3	GND CON 121.9 348.6	UNICOM 122.95
------------------------	---	--	-------------------------------	-------------------------



CATEGORY	A	B	C	D
S-ILS 35	242/24 211 (300-1/2)			
S-LOC 35	500/24	469 (500-1/2)	500/50	469 (500-1)
<input checked="" type="checkbox"/> CIRCLING	560-1	528 (600-1)	720-2 688 (700-2)	920-3 888 (900-3)

SE-2, 31 OCT 2024 to 28 NOV 2024

SE-2, 31 OCT 2024 to 28 NOV 2024