

WINK, TEXAS

AL-461 (FAA)

23054

VORTAC INK 112.1 Chan 58	APP CRS 150°	Rwy Idg TDZE Apt Elev	5003 2822 2822
--	------------------------	-----------------------------	---

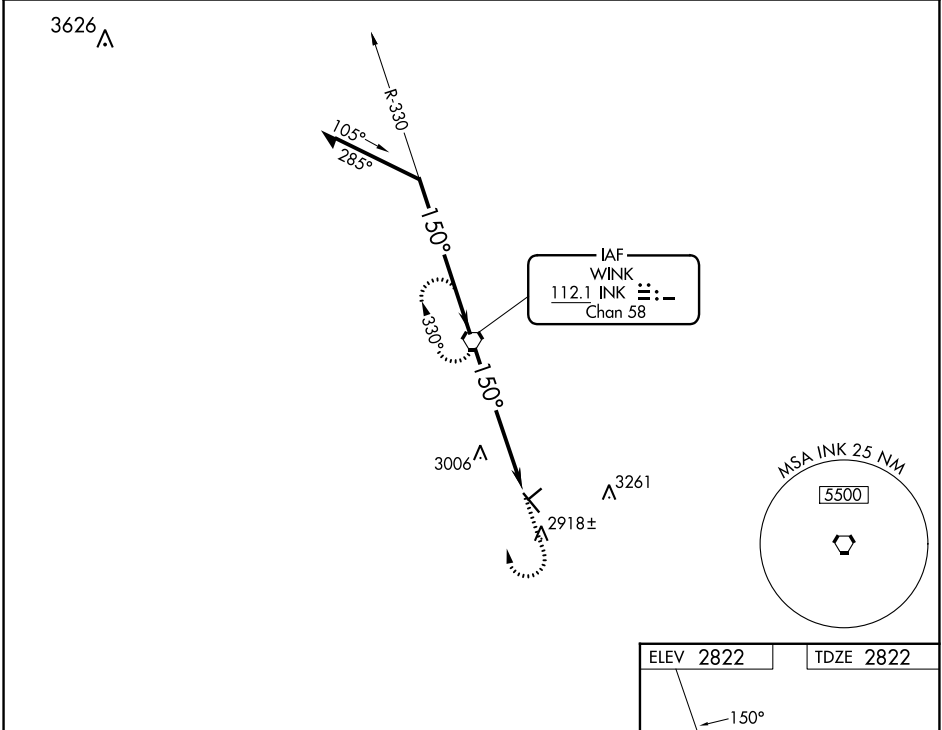
VOR RWY 13

WINKLER COUNTY (INK)



MISSED APPROACH: Climb to 3500 then climbing right turn to 5000 direct INK VORTAC and hold, continue climb-in-hold to 5000.

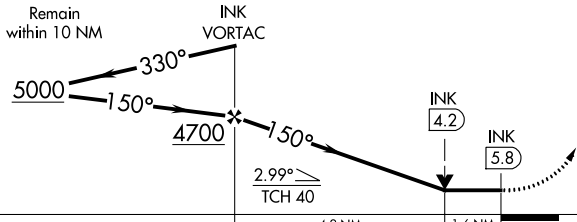
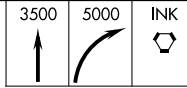
ASOS 118.325	FORT WORTH CENTER 133.1 298.95	UNICOM 123.0 (CTAF) 0
------------------------	--	---------------------------------



SC-3, 31 OCT 2024 to 28 NOV 2024

SC-3, 31 OCT 2024 to 28 NOV 2024

VGSI and descent angles not coincident (VGSI Angle 3.00/TCH 22).



ELEV 2822	TDZE 2822
-----------	-----------

MRL Rwys 4-22 and 13-31 0

FAF to MAP 5.8 NM					
Knots	60	90	120	150	180
Min:Sec	5:48	3:52	2:54	2:19	1:56

CATEGORY	A	B	C	D
S-13	3340-1	518 (600-1)	3340-1 $\frac{1}{8}$ 518 (600-1 $\frac{1}{8}$)	NA
C CIRCLING	3340-1	518 (600-1)	3580-2 $\frac{1}{4}$ 758 (800-2 $\frac{1}{4}$)	NA

WINK, TEXAS
Amdt 10A 06OCT22

31°47'N-103°12'W

WINKLER COUNTY (INK)
VOR RWY 13