

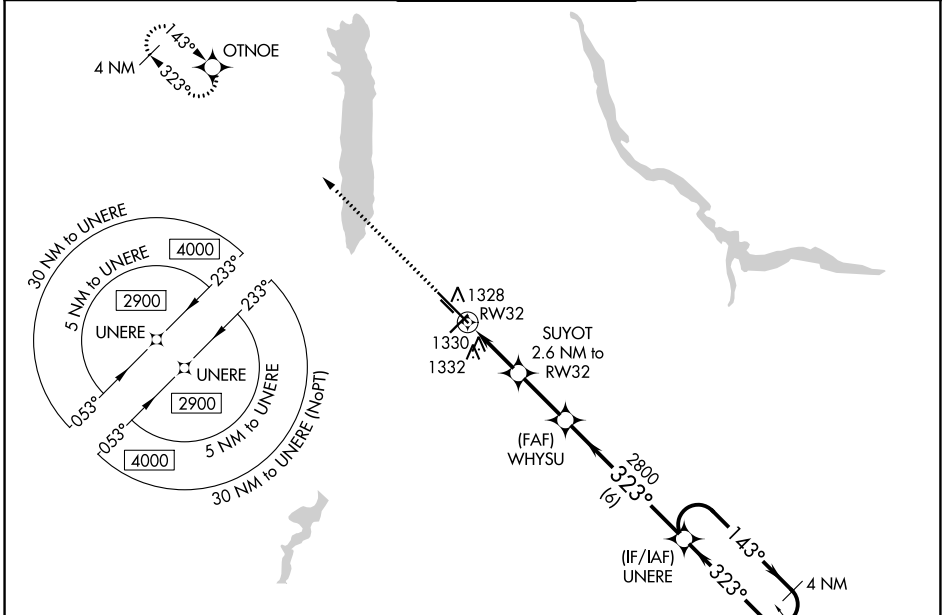
WAAS CH <b>97406</b> <b>W32A</b>	APP CRS <b>323°</b>	Rwy Idg TDZE Apt Elev	<b>9003</b> <b>1186</b> <b>1192</b>
--	------------------------	-----------------------------	---

# RNAV (GPS) RWY 32

YOUNGSTOWN/WARREN RGNL (YNG)

RNP APCH - GPS.		MALSR	MISSED APPROACH: Climb to 2900 direct OTNOE and hold.	
ASR	Circling Rwy 5 and 23 NA at night. For uncompensated Baro-VNAV systems, LNAV/VNAV NA below -18°C or above 54°C.			

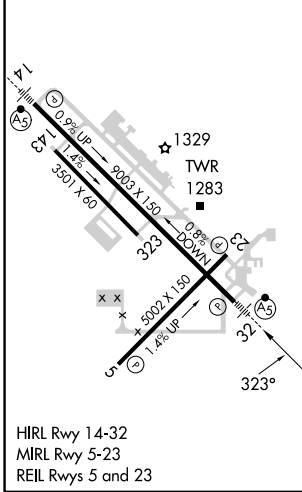
ATIS <b>123.75</b>	YOUNGSTOWN APP CON * <b>133.95 322.3</b>	YOUNGSTOWN TOWER <b>119.5 263.0</b>	GND CON <b>121.9 275.8</b>	CLNC DEL <b>118.25</b>
-----------------------	---	--	-------------------------------	---------------------------



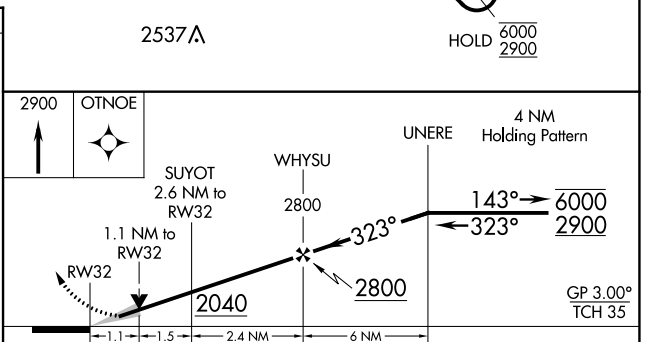
EC-2, 31 OCT 2024 to 28 NOV 2024

EC-2, 31 OCT 2024 to 28 NOV 2024

ELEV 1192	<b>D</b>	TDZE 1186
-----------	----------	-----------



HIRL Rwy 14-32  
MIRL Rwy 5-23  
REIL Rwy 5 and 23



CATEGORY	A	B	C	D
LPV DA		1436/24	250 (300-½)	
LNAV/VNAV DA		1511/26	325 (400-½)	
LNAV MDA	1580/24	394 (400-½)	1580/35	394 (400-¾)
<b>C</b> CIRCLING	1640-1 448 (500-1)	1660-1 468 (500-1)	1740-1½ 548 (600-1½)	1760-2 568 (600-2)

YOUNGSTOWN/WARREN, OHIO  
Amdt 1 31OCT24

YOUNGSTOWN/WARREN RGNL (YNG)  
RNAV (GPS) RWY 32

41°16'N-80°41'W