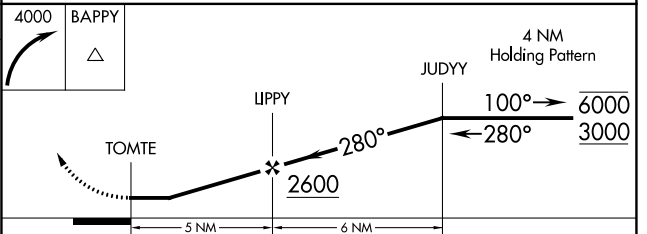
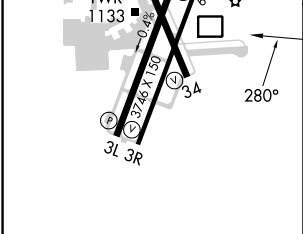
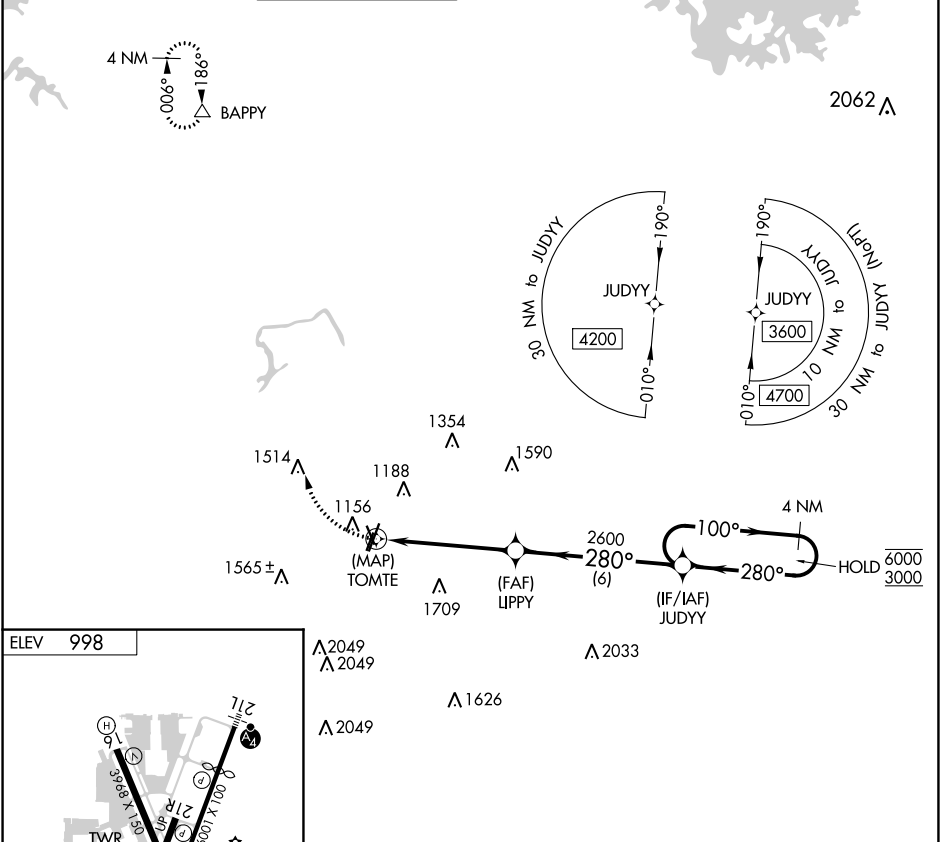


APP CRS	Rwy Idg	N/A
280°	TDZE	N/A
	Apt Elev	998

RNAV (GPS)-A

DEKALB-PEACHTREE (PDK)

RNP APCH.		MISSED APPROACH: Climbing right turn to 4000 direct BAPPY and hold.							
<p>Circling Rwy 16, 34 NA at night.</p>		ATIS	ATLANTA APP CON	PEACHTREE TOWER ★	GND CON	CLNC DEL	CLNC DEL	UNICOM	
128.4	126,975 239,275	120.9 (CTAF) 281.5	121.6	125.2	120.9	(When twr closed)	122.95	120.0	



CATEGORY	A	B	C	D
CIRCLING	1580-1	582 (600-1)	1840-2½ 842 (900-2½)	2060-3 1062 (1100-3)

HIRL Rwy 3R-21L

MIRL Rws 16-34 and 3L-21R

REIL Rws 3R and 21L

SE-4, 31 OCT 2024 to 28 NOV 2024

SE-4, 31 OCT 2024 to 28 NOV 2024