

APP CRS	Rwy Idg	<b>5411</b>
<b>026°</b>	TDZE	<b>996</b>
	Apt Elev	<b>998</b>

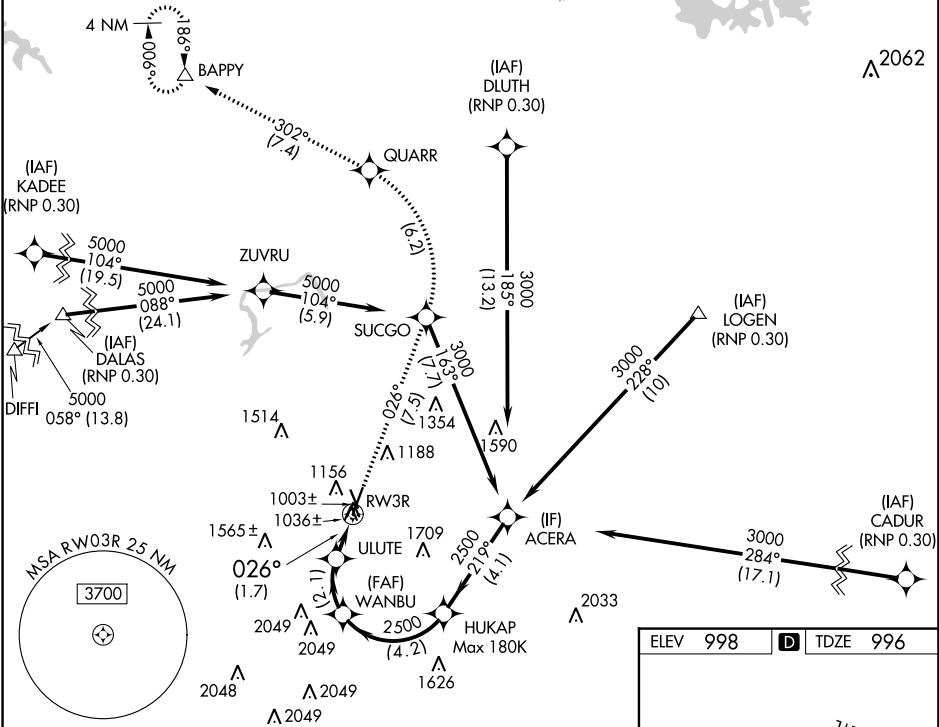
# RNAV (RNP) RWY 3R

DEKALB-PEACHTREE (PDK)

**▼** For uncompensated Baro-VNAV systems, procedure NA below 1°C (33°F) or above 45°C (114°F).  
RF required. GPS required.

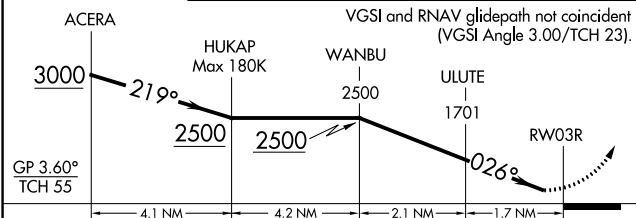
MISSED APPROACH: Climb to 4000 on track 026° to SUCGO then left turn to QUARR then on track 302° to BAPPY and hold.

ATIS	ATLANTA APP CON	PEACHTREE TOWER ★	GND CON	CLNC DEL	CLNC DEL	UNICOM	<b>120.0</b>
<b>128.4</b>	<b>126.975 239.275</b>	<b>120.9(CTAF) 281.5</b>	<b>121.6</b>	<b>125.2</b>	<b>120.9</b> (When twr closed)	<b>122.95</b>	

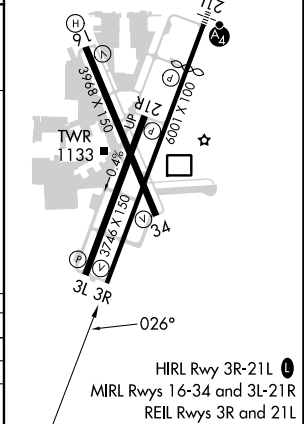


SE-4, 31 OCT 2024 to 28 NOV 2024

SE-4, 31 OCT 2024 to 28 NOV 2024



ELEV	<b>998</b>	<b>D</b>	TDZE	<b>996</b>
------	------------	----------	------	------------



CATEGORY	A	B	C	D
RNP 0.10 DA	1334-1	338 (400-1)		NA
RNP 0.30 DA	1441-1 3/8	445 (500-1 3/8)		NA

## AUTHORIZATION REQUIRED

HIRL Rwy 3R-21L  
MIRL Rwy 16-34 and 3L-21R  
REIL Rwy 3R and 21L