

PERU, INDIANA

# TACAN or VOR RWY 23

VORTAC GUS <b>108.45</b> Chan <b>21</b> (Y)	APCH CRS <b>221°</b>	Rwy Idg <b>12,501</b> TDZE <b>799</b> Arprt Elev <b>811</b>
---	-------------------------	---

[USAF]

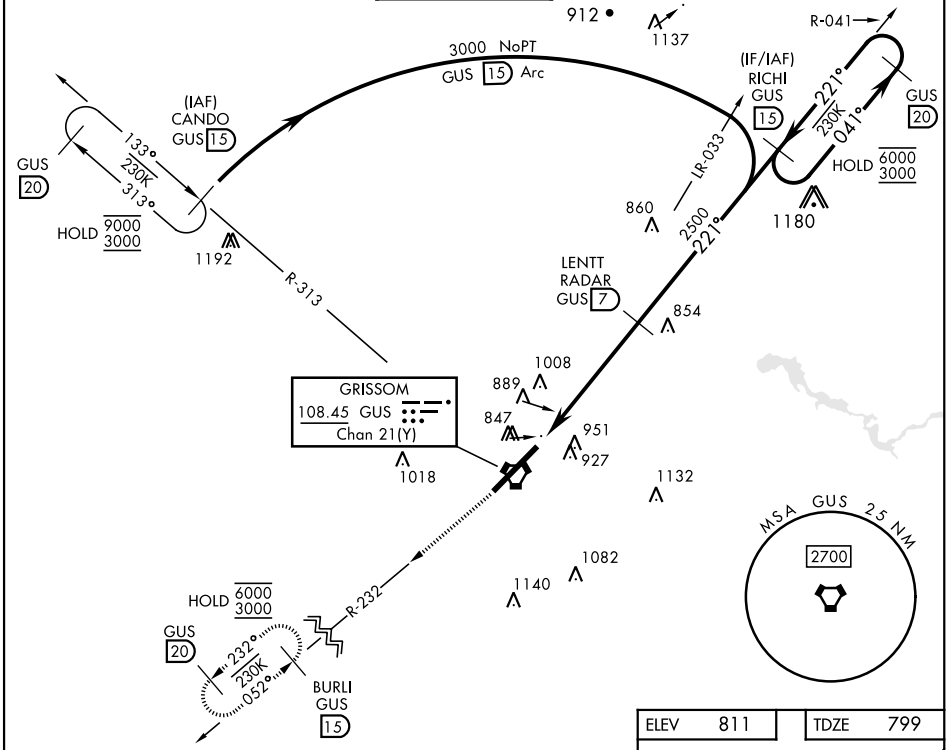
GRISSOM ARB (KGUS)

RADAR, DME required  
\* When ALS inop, increase CAT AB RVR to 55 and vis to 1 mile; CAT CDE vis to 1½ miles.

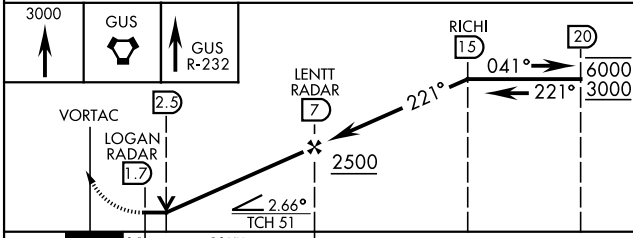


MISSED APPROACH: Climb to 3000 on the GUS VORTAC, R-232 to BURLI and hold. Missed approach requires use of RNAV or ATC RADAR monitoring.

ATIS <b>108.45 270.8</b>	APP CON <b>121.05 351.8</b> (E) <b>123.85 291.675</b> (W)	TOWER ★ <b>133.7 290.45</b>	GND CON <b>128.425 275.8</b>	CLNC DEL <b>128.425 275.8</b>
-----------------------------	---	--------------------------------	---------------------------------	----------------------------------



EMERG SAFE ALT 100 NM 3500



ELEV 811	TDZE 799
HIRL Rwy 5-23	
FAF to MAP 5.3 NM	
Knots	60 90 120 150 180
Min:Sec	5:18 3:32 2:39 2:07 1:46

CATEGORY	A	B	C	D	E
S-23*	1260/24 461 (500-½)		1260/50 461 (500-1)		
CIRCLING	1340-1 529 (600-1)		1400-1½ 589 (600-1½)	1400-2 589 (600-2)	1440-2¼ 629 (700-2¼)

PERU, INDIANA

40°39'N-86°09'W

GRISSOM ARB (KGUS)

Amtd 7 11AUG22

# TACAN or VOR RWY 23

EC-2, 31 OCT 2024 to 28 NOV 2024

EC-2, 31 OCT 2024 to 28 NOV 2024