

# RNAV (GPS) RWY 14L

WAAS Chan <b>41117</b> <b>W14A</b>	APCH CRS <b>144°</b>	Rwy Idg TDZE Arprt Elev <b>8979</b> <b>26</b> <b>29</b>
--	-------------------------	--

[USN]

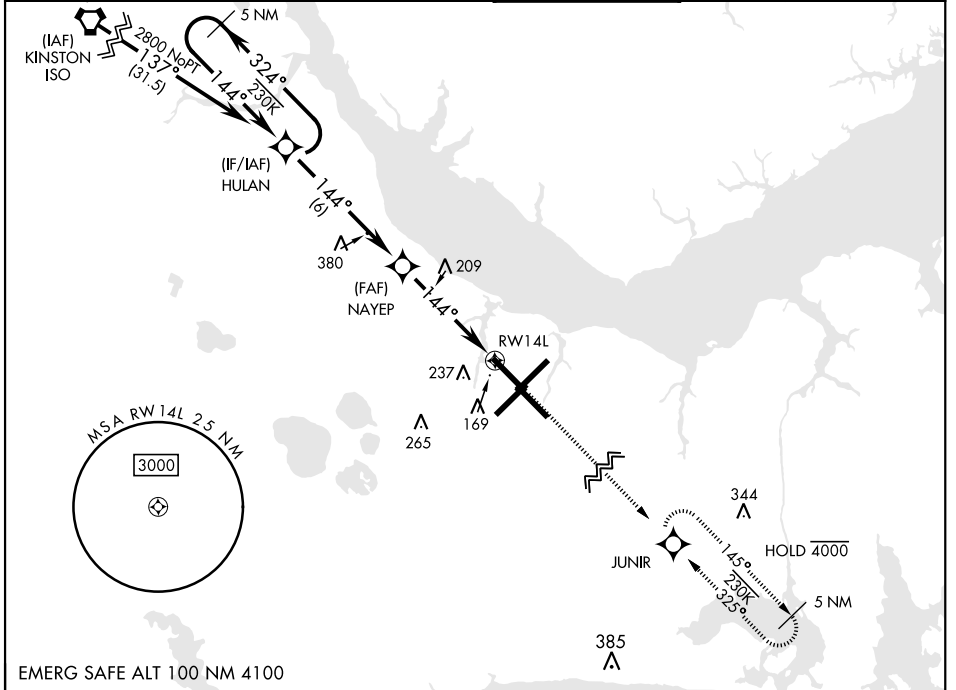
CHERRY POINT MCAS (CUNNINGHAM FLD) (KNKT)

RNP APCH

▼ For uncompensated Baro-VNAV systems, LNAV/VNAV NA below -15°C (5°F) or above 54°C (129°F).

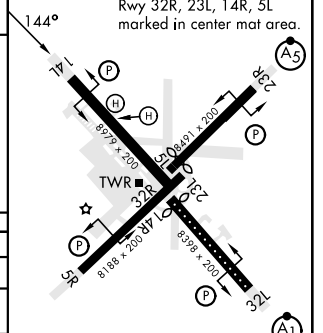
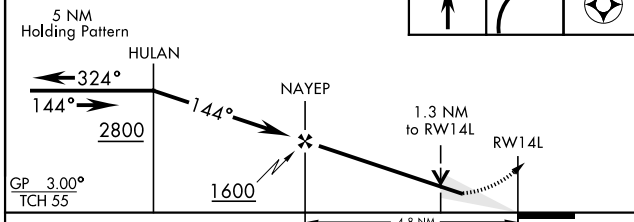
MISSED APPROACH: Climb to 600 then climbing right turn to 2800 direct JUNIR and hold.

ATIS <b>127.475</b> <b>244.875</b>	APP CON <b>119.75 (E)</b> <b>360.775</b> (abv 2600') <b>132.575 (E)</b> <b>299.6</b> (at/blw 2600') <b>119.35 (W)</b> <b>377.175 (N)</b> <b>124.1</b> <b>268.7</b>	TOWER <b>121.3</b> <b>340.2</b>	GND CON <b>128.625</b> <b>239.025</b>	CLNC DEL <b>125.95</b> <b>316.125</b>	ASR/ PAR
--	---	------------------------------------	---	---	-------------



EMERG SAFE ALT 100 NM 4100

VGSI and RNAV glidepath not coincident (VGSI Angle 3.00°/TCH 71').	600	2800	JUNIR	ELEV 29	TDZE 26
--	-----	------	-------	---------	---------



CATEGORY	A	B	C	D
LPV DA		226- <sup>3</sup> / <sub>8</sub>	200	(200- <sup>3</sup> / <sub>8</sub> )
LNAV/VNAV DA	301- <sup>7</sup> / <sub>8</sub> 275 (300- <sup>7</sup> / <sub>8</sub> )	312- <sup>7</sup> / <sub>8</sub> 286 (300- <sup>7</sup> / <sub>8</sub> )	320- <sup>7</sup> / <sub>8</sub> 294 (300- <sup>7</sup> / <sub>8</sub> )	331- <sup>7</sup> / <sub>8</sub> 305 (400- <sup>7</sup> / <sub>8</sub> )
LNAV MDA	500-1	474 (500-1)	500-1 <sup>3</sup> / <sub>8</sub> 474	(500-1 <sup>3</sup> / <sub>8</sub> )
CIRCLING	580-1	551 (600-1)	580-1 <sup>1</sup> / <sub>2</sub> 551 (600-1 <sup>1</sup> / <sub>2</sub> )	580-2 551 (600-2)

HIRL all rwys  
REIL Rwy 5L and 14R  
Rwy 5L-23R Idg 7552'  
Rwy 14R-32L Idg 7551'

# RNAV (GPS) RWY 14L

SE-2, 31 OCT 2024 to 28 NOV 2024

SE-2, 31 OCT 2024 to 28 NOV 2024