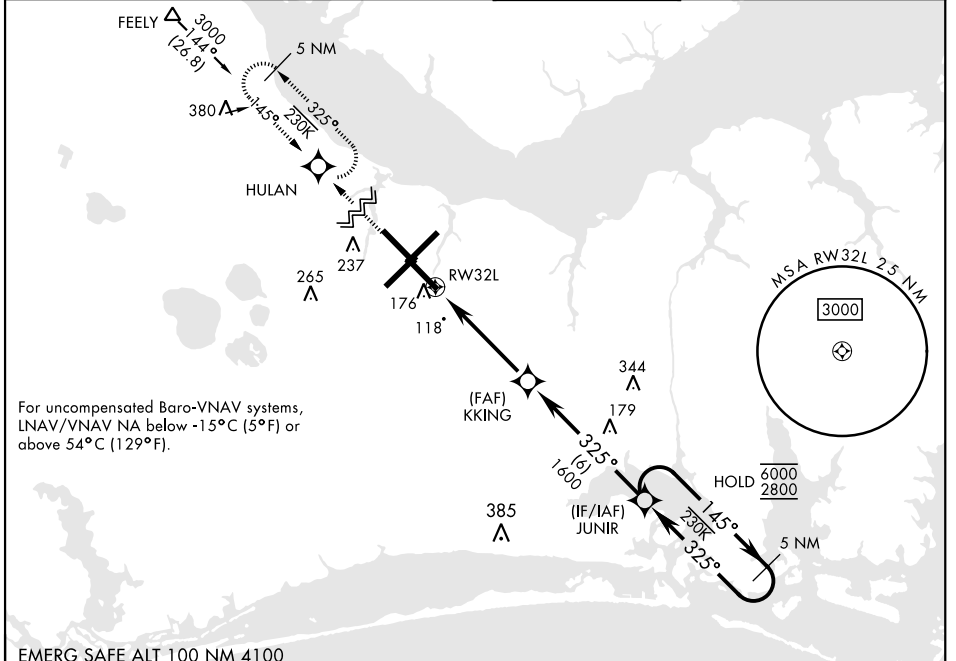


RNAV (GPS) RWY 32L

WAAS Chan 54304 W32A	APCH CRS 325°	Rwy ldg TDZE 26 Arprt Elev 29	7551
--	-------------------------	---	-------------

[USN] CHERRY POINT MCAS (CUNNINGHAM FLD) (KNKT)

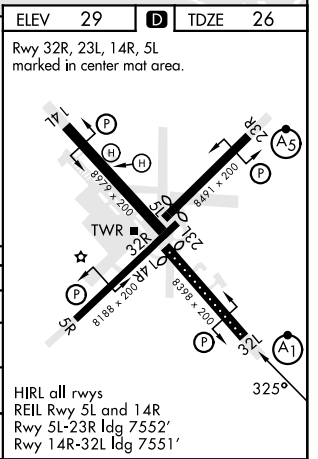
RNP APCH ▼ *When ALS inop, increase vis to ¾ mile. ***When ALS inop, increase vis to 1 mile. ***When ALS inop, increase CAT AB vis to 1 mile, CAT CD vis to 1¼ miles.		ALSIF-1 	MISSED APPROACH: Climb to 600 then climbing right turn to 2800 direct HULAN and hold.			
ATIS 127.475 244.875	(E) 119.75 (E) 132.575 (W) 119.35	APP CON 360.775 (abv 2600') 299.6 (at/blw 2600') 377.175 (N) 124.1 268.7	TOWER 121.3 340.2	GND CON 128.625 239.025	CLNC DEL 125.95 316.125	ASR/ PAR



SE-2, 31 OCT 2024 to 28 NOV 2024

SE-2, 31 OCT 2024 to 28 NOV 2024

EMERG SAFE ALT 100 NM 4100			
600 ↑	2800 ↻	HULAN 	VGSI and RNAV glidepath not coincident. (VGSI Angle 3.00/TCH 78)
RWY 32L → 1.2 NM to RWY 32L KKKING ← 325° JUNIR ← 325° Holding Pattern: 5 NM, 6000/2800, 145°			GP 3.04° TCH 50
CATEGORY	A	B	C
LPV DA *		225-½	200 (200-½)
LNAV/ VNAV DA **		400-⅝	375 (400-⅝)
LNAV MDA ***	460-½	435 (500-½)	460-¾ 435 (500-¾)
CIRCLING	580-1	551 (600-1)	580-1½ 551 (600-1½)



RNAV (GPS) RWY 32L