

TACAN Z RWY 32L

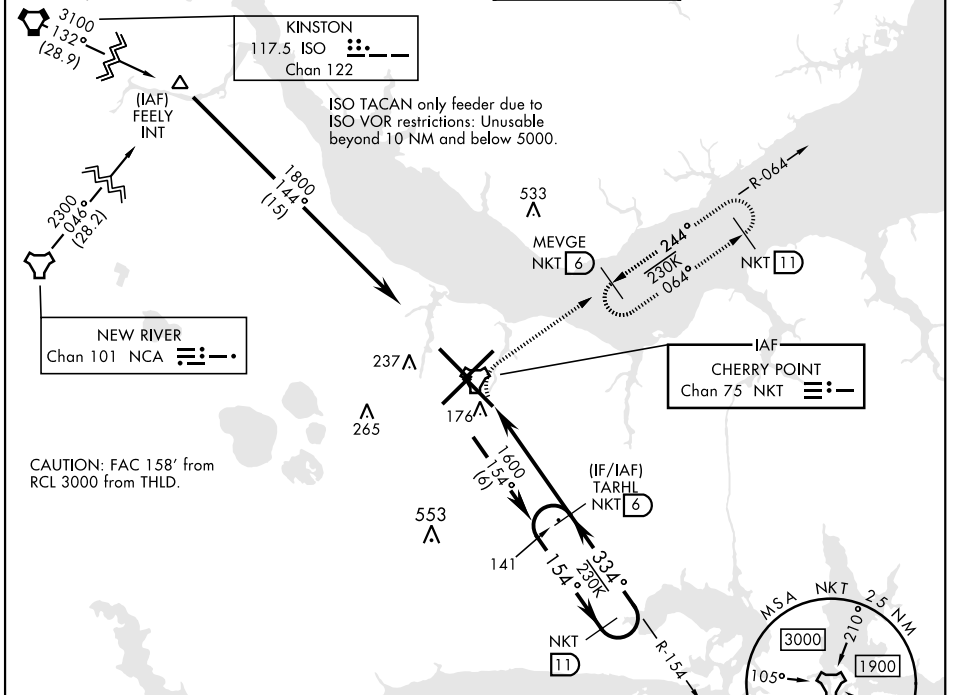
TACAN NKT Chan 75	APCH CRS 334°	Rwy Idg TDZE 26 Arprt Elev 29
-----------------------------	-------------------------	---

[USN]

CHERRY POINT MCAS (CUNNINGHAM FLD) (KNKT)

▼ * When ALS inop, increase vis CAT AB to 1 mile, CAT CD to 1½ miles.
 ALS F-1
(A1)
MISSED APPROACH: Climbing right turn to 1600 and intercept NKT R-064 to MEVGE and hold.

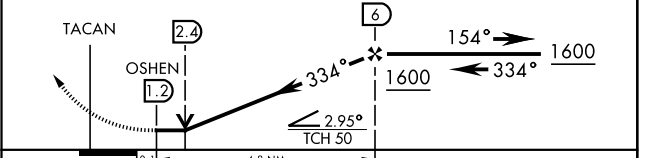
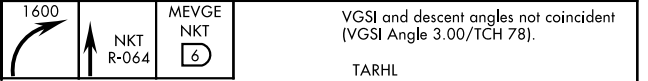
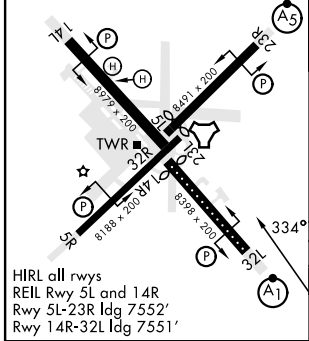
ATIS 127.475 244.875	(E) 119.75 (E) 132.575 (W) 119.35	APP CON 360.775 (abv 2600') 299.6 (at/blw 2600') 377.175 (N) 124.1 268.7	TOWER 121.3 340.2	GND CON 128.625 239.025	CLNC DEL 125.95 316.125	ASR/PAR
--	--	--	------------------------------------	---	---	---------



EMERG SAFE ALT 100 NM 4100

ELEV 29	D	TDZE 26
----------------	----------	----------------

Rwy 32R, 23L, 14R, 5L marked in center mat area.



CATEGORY	A	B	C	D
S-32L *	460-½	435 (500-½)	460-¾ 435 (500-¾)	
C CIRCLING	580-1	551 (600-1)	580-1½ 551 (600-1½)	580-2 551 (600-2)

TACAN Z RWY 32L

SE-2, 31 OCT 2024 to 28 NOV 2024

SE-2, 31 OCT 2024 to 28 NOV 2024