

WAAS CH 40206 W03A	APP CRS 031°	Rwy Idg TDZE Apt Elev	7707 410 410
--	------------------------	-----------------------------	---

RNAV (GPS) Y RWY 3L

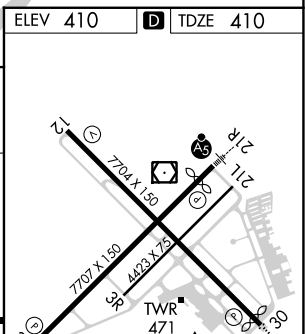
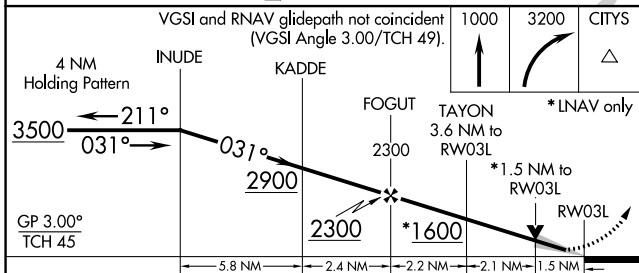
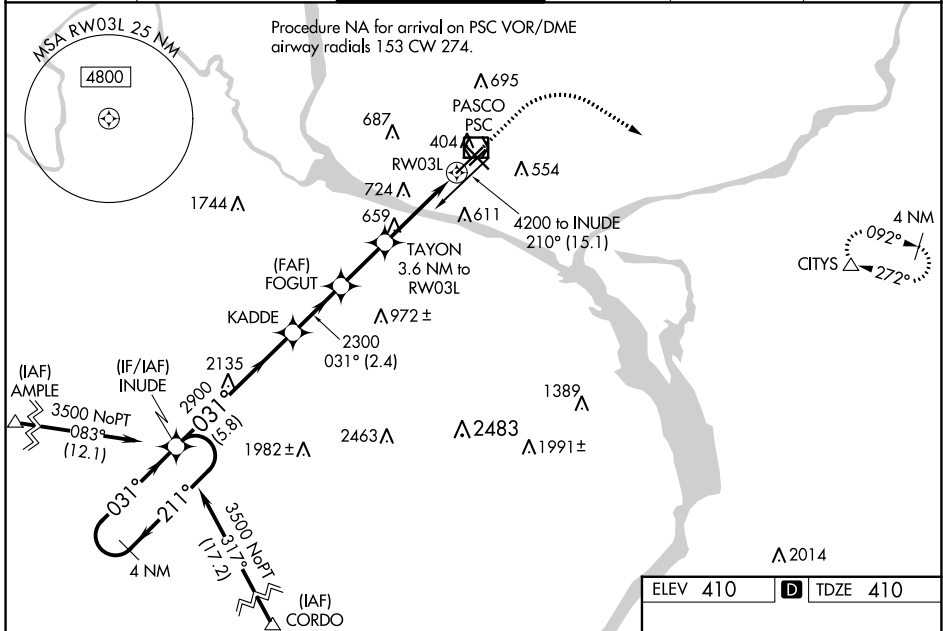
TRI-CITIES (PSC)

RNP APCH.

⚠ Baro-VNAV NA when using Hermiston altimeter setting. For uncompensated Baro-VNAV systems, LNAV/VNAV NA below -14°C or above 54°C. VDP NA with Hermiston altimeter setting. When local altimeter setting not received, use Hermiston altimeter setting: increase all DA 95 feet and all MDA 100 feet. Increase LPV all Cats visibility ¼ mile, LNAV/VNAV all Cats visibilities ⅓ mile: increase LNAV Cats C and D visibility ⅓ mile. Circling Cat C and D visibility ¼ mile.

MISSED APPROACH:
Climb to 1000 then climbing right turn to 3200 direct CITYS and hold.

ATIS 125.65	SPOKANE APP CON* 128.75 377.2	TRI-CITIES TOWER* 135.3 (CTAF) 0 323.3	GND CON 121.8	CLNC DEL 120.0	UNICOM 122.95
-----------------------	---	--	-------------------------	--------------------------	-------------------------



CATEGORY	A	B	C	D
LPV DA	610-¾	200 (200-¾)		
LNAV/VNAV DA	708-1	298 (300-1)		
LNAV MDA	920-1 510 (600-1)	920-1 510 (600-1 ⅓)		
C CIRCLING	920-1 510 (600-1)	940-1 530 (600-1)	1040-1 ⅓ 630 (700-1 ⅓)	1100-2 ¼ 690 (700-2 ¼)

ELEV 410 **D** TDZE 410

REIL Rwy 3L and 12
MIRL Rwy 12-30 **⓪**
HIRL Rwy 3L-21R **⓪**

NW-1, 31 OCT 2024 to 28 NOV 2024

NW-1, 31 OCT 2024 to 28 NOV 2024