

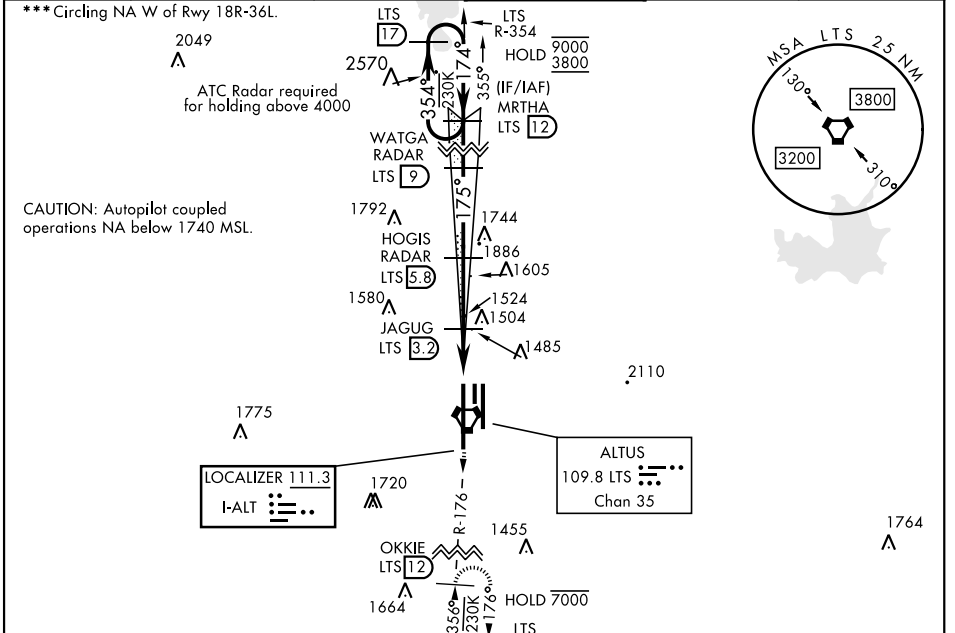
ALTUS, OKLAHOMA

# ILS Z or LOC RWY 18R

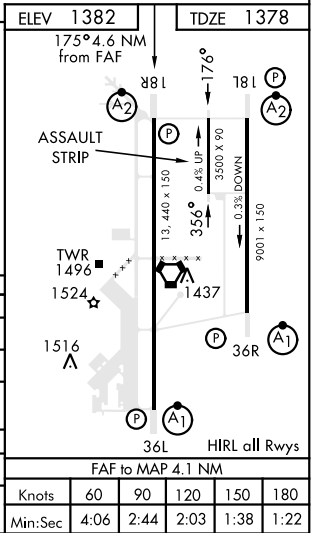
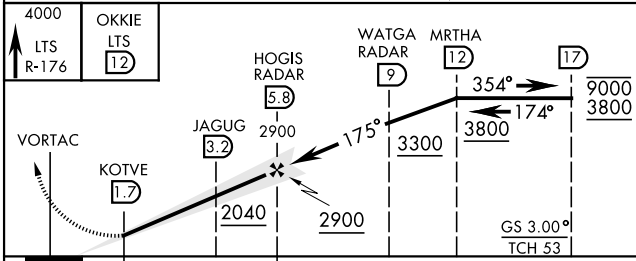
LOC I-ALT <b>111.3</b>	APCH CRS <b>175°</b>	Rwy Idg <b>13,440</b> TDZE <b>1378</b> Arprt Elev <b>1382</b>	AL-482 [USAF]	ALTUS AFB (KLTS)
---------------------------	-------------------------	---	---------------	------------------

DME or RADAR required.		SALSF <b>A2</b>	MISSED APPROACH: Climb to 4000, intercept LTS VORTAC R-176 to OKKIE and hold.
*When ALS inop, increase RVR to 55 and vis to 1 mile. **When ALS inop, increase CAT AB RVR to 55, vis to 1 mile; CAT CDE vis to 1 1/8 miles.			

ATIS ★ <b>109.8 273.5</b>	FORT WORTH CENTER <b>133.5 350.35</b>	APP CON <b>125.1 353.7</b>	TOWER ★ <b>119.65 254.4</b>	GND CON <b>121.85 275.8</b>	CLNC DEL <b>120.65 284.7</b>
------------------------------	--	-------------------------------	--------------------------------	--------------------------------	---------------------------------



EMERG SAFE ALT 100 NM 4900



CATEGORY	A	B	C	D	E
S-ILS 18R	1578/40		200	(200-3/4)	
S-LOC 18R *	1760/40	382 (400-3/4)	1760/45	382	(400-7/8)
*** CIRCLING	1780-1 398 (400-1)	1840-1 458 (500-1)	1880-1 1/2 498 (500-1 1/2)	2080-2 1/4 698 (700-2 1/4)	2180-2 3/4 798 (800-2 3/4)
LOCAL ALTIMETER, WITHOUT LAST STEPDOWN FIX					
S-LOC 18R **	2040/40	662 (700-3/4)	2040-1 3/4	662	(500-1 3/4)
*** CIRCLING	2040-1	658 (700-1)	2040-1 7/8 658 (700-1 7/8)	2080-2 1/4 698 (700-2 1/4)	2180-2 3/4 798 (800-2 3/4)

ALTUS, OKLAHOMA 34° 40' N-99° 16' W ALTUS AFB (KLTS)

Amdt 2 14JUL22

# ILS Z or LOC RWY 18R

SC-1, 31 OCT 2024 to 28 NOV 2024

SC-1, 31 OCT 2024 to 28 NOV 2024