

ALTUS, OKLAHOMA

RNAV (RNP) X RWY 18R

APCH CRS	Rwy Idg	13,440
175°	TDZE	1378
	Arpt Elev	1382

AL-482 (USAF)

ALTUS AFB (KLTS)

RNP AR APCH - RF



MISSED APPROACH: Climb to 4000 on track 175° to OKKIE and hold.

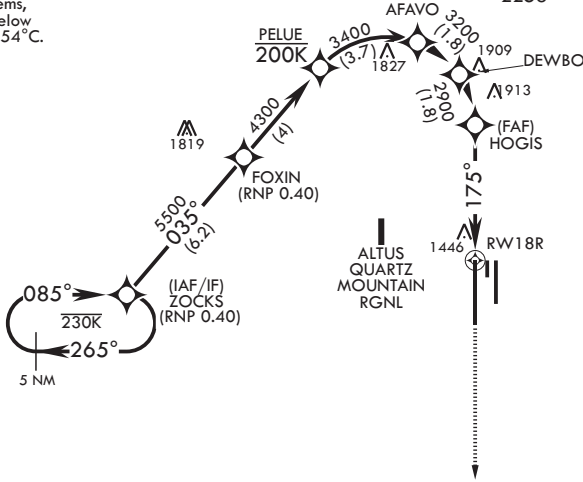
* When ALS inop, increase RVR to 45, vis to 7/8 mile.
 ** When ALS inop, increase RVR to 60, vis to 1 1/8 miles.

ATIS★ 109.8 273.5	APP CON 125.1 353.7	TOWER★ 119.65 254.4	GND CON 121.85 275.8	CLNC DEL 120.65 284.7
----------------------	------------------------	------------------------	-------------------------	--------------------------

For uncompensated Baro-VNAV systems, procedure NA below -17°C or above 54°C.

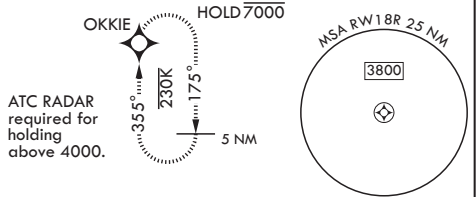
Max 200 KIAS until DEWBO

2258



**AUTHORIZATION
REQUIRED
FOR USE BY 97
AMW ACFT ONLY**

EMERG SAFE ALT 100 NM 4900



ZOCKS	FOXIN	PELUE	AFAVO	DEWBO	HOGIS	RWY 18R	OKKIE	ELEV 1382	TDZE 1378
8000	5500	4300	3400	3200	2900	175°	4000	175° to RWY 18R	175° to RWY 18R
GP 3.00° TCH 53	035°								
CATEGORY	A	B	C	D					
RNP 0.10 DA*	1679/40	301	(300-3/4)						
RNP 0.30 DA**	1783/50	405	(500-1)						

ALTUS, OKLAHOMA

34°40'N - 99°16'W

ALTUS AFB (KLTS)

Amdt 2 14JUL22

RNAV (RNP) X RWY 18R

SC-1, 31 OCT 2024 to 28 NOV 2024

SC-1, 31 OCT 2024 to 28 NOV 2024