

ALTUS, OKLAHOMA

RNAV (RNP) Y RWY 18L

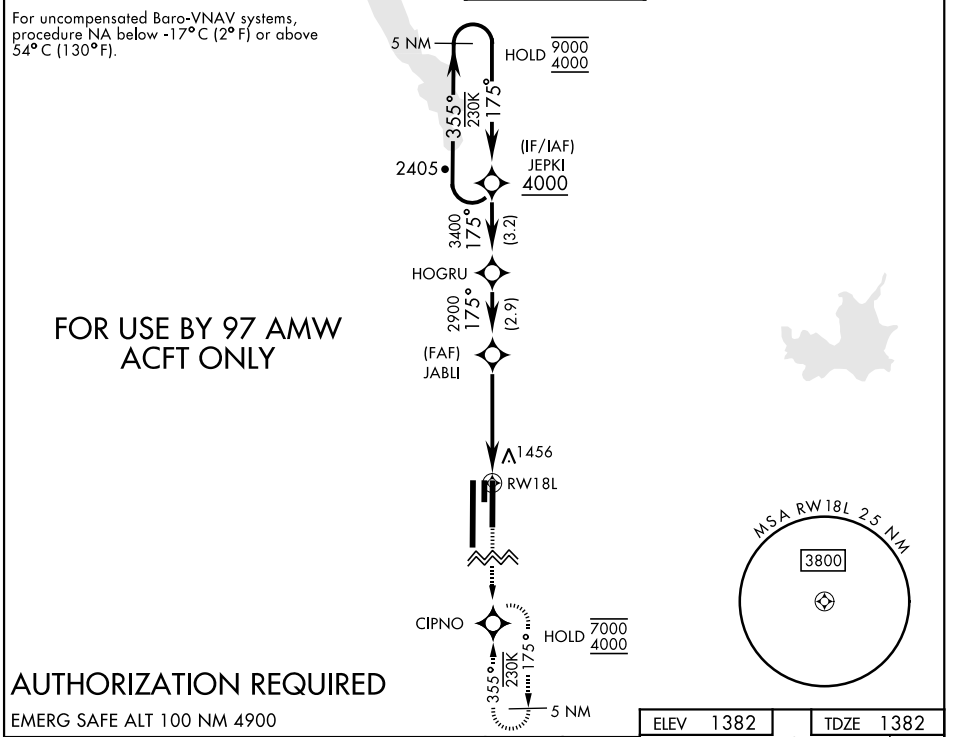
APCH CRS	Rwy Idg	9001
175°	TDZE	1382
	Arpt Elev	1382

AL-482 [USAF]

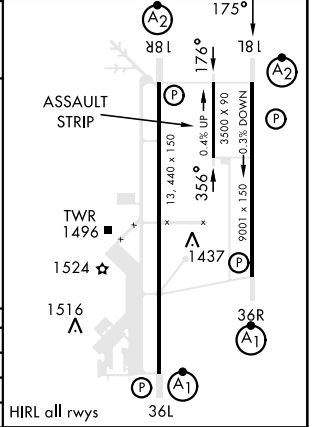
ALTUS AFB (KLTS)

RNP AR APCH - GPS	SALSF A2	MISSED APPROACH: Climb to 4000 direct CIPNO and hold.
-------------------	-------------	---

ATIS ★ 109.8 273.5	FORT WORTH CENTER 133.5 350.35	APP CON 125.1 353.7	TOWER ★ 119.65 254.4	GND CON 121.85 275.8	CLNC DEL 120.65 284.7
-----------------------	-----------------------------------	------------------------	-------------------------	-------------------------	--------------------------



	4000	CIPNO		
	5 NM Holding Pattern			
	JABLI	HOGRU		
	3400	3400		
	175°	175°		
	355°	355°		
	9000	9000		
	4000	4000		
	GP 3.00°	TCH 46		
CATEGORY	A	B	C	D
RNP 0.10 DA*	1644/40		262	(300-¾)
RNP 0.30 DA**	1729/40		347	(400-¾)
CIRCLING	NOT AUTHORIZED			



SC-1, 31 OCT 2024 to 28 NOV 2024

SC-1, 31 OCT 2024 to 28 NOV 2024

ALTUS, OKLAHOMA
Amdt 2 10AUG23

34°40'N-99°16'W

ALTUS AFB (KLTS)

RNAV (RNP) Y RWY 18L