

VOR or TACAN-C

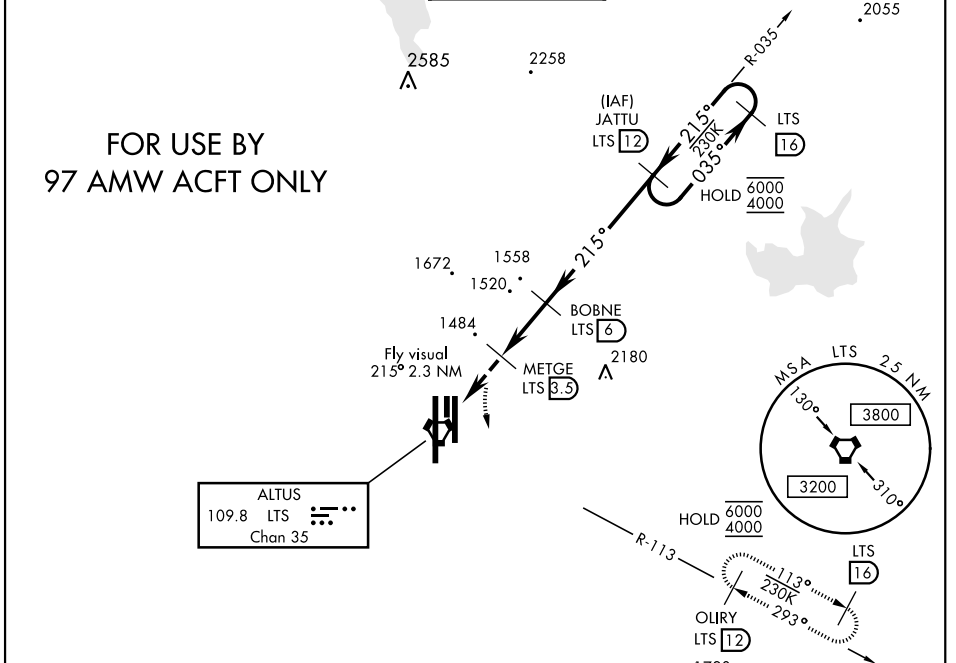
VORTAC LTS 109.8 Chan 35	APCH CRS 215°	Rwy Idg TDZE Arprt Elev N/A N/A 1382
--	-------------------------	--

AL-482 [USAF]

ALTUS AFB (KLTS)

RADAR, DME required.	MISSED APPROACH: Climb to 2300, then climbing left turn to 4000 intercept LTS R-113 to OLIRY and hold.
----------------------	--

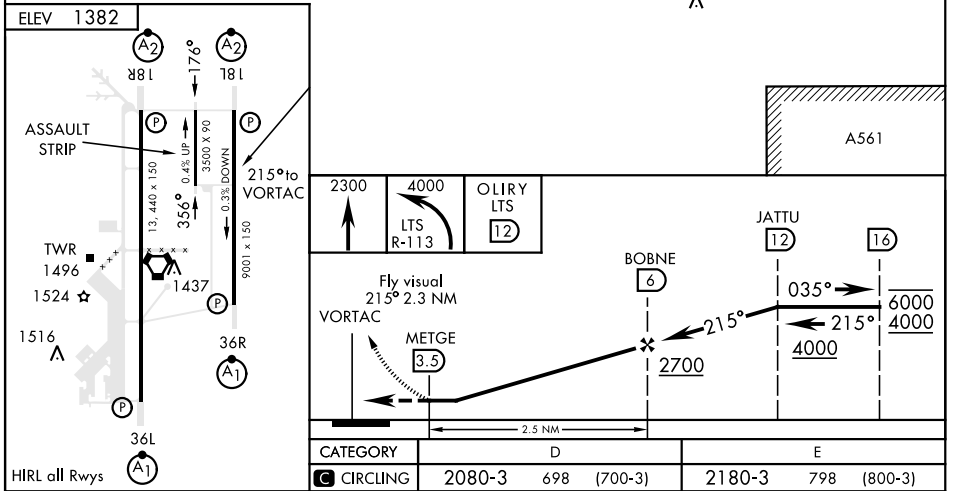
ATIS ★ 109.8 273.5	FORT WORTH CENTER 133.5 350.35	APP CON 125.1 353.7	TOWER ★ 119.65 254.4	GND CON 121.85 275.8	CLNC DEL 120.65 284.7
------------------------------	--	-------------------------------	--------------------------------	--------------------------------	---------------------------------



FOR USE BY 97 AMW ACFT ONLY

ALTUS
109.8 LTS
Chan 35

EMERG SAFE ALT 100 NM 4900



ALTUS, OKLAHOMA

34°40'N-99°16'W

ALTUS AFB (KLTS)

Amtd 3 14JUL22

VOR or TACAN-C

SC-1, 31 OCT 2024 to 28 NOV 2024

SC-1, 31 OCT 2024 to 28 NOV 2024