

WAAS CH 45700 W23A	APP CRS 234°	Rwy Idg TDZE Apt Elev	4301 78 79
--	------------------------	-----------------------------	---------------------------------------

RNAV (GPS) RWY 23

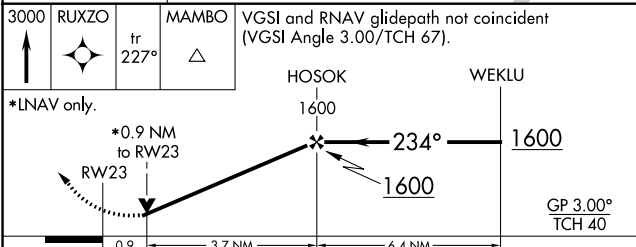
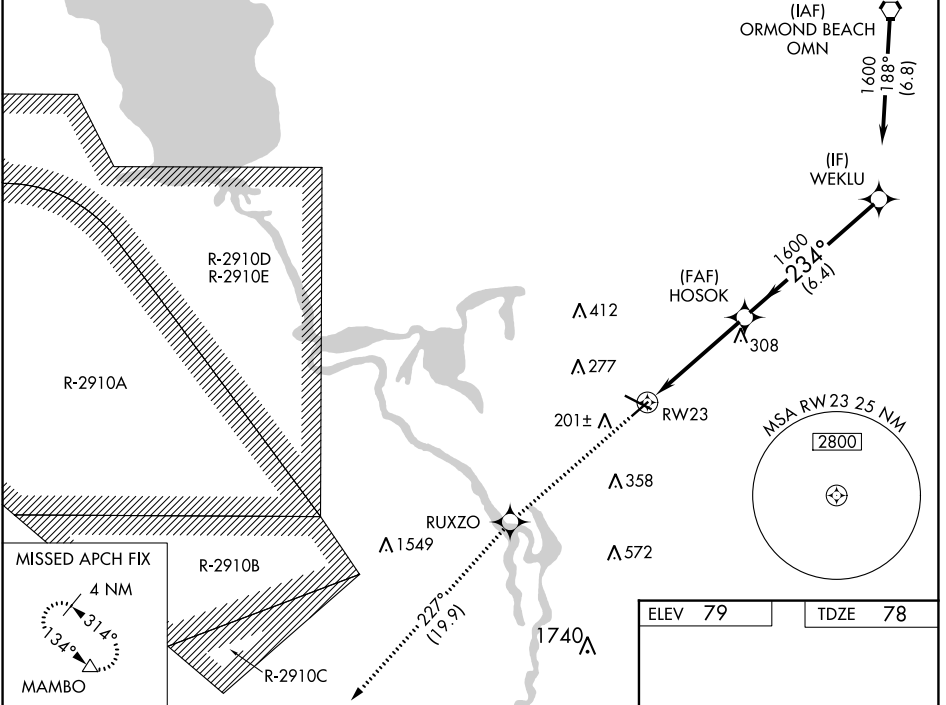
DELAND MUNI-SIDNEY H TAYLOR FLD (DED)

RNP APCH.

▼ For uncompensated Baro-VNAV systems, LNAV/VNAV NA below -15°C (5°F) or above 54°C (130°F).
 ▲ Baro-VNAV and VDP NA when using Daytona Beach Intl altimeter setting. Rwy 23 helicopter visibility reduction below 3/4 SM NA. When local altimeter setting not received, use Daytona Beach Intl altimeter setting and increase all DA 38 feet and all MDA 40 feet, increase LPV visibility 1/8 SM all Cats.

MISSED APPROACH:
 Climb to 3000 direct RUXZO and on track 227° to MAMBO and hold.

AWOS-3 119.575	DAYTONA APP CON 125.35 322.3	UNICOM 123.075 (CTAF) 0
--------------------------	--	-----------------------------------



ELEV 79	TDZE 78
---------	---------

The diagram shows the approach path for RWY 23, including the HOSOK and WEKLU fixes. It indicates the distance from HOSOK to WEKLU (1600 feet) and the distance from WEKLU to RWY 23 (1600 feet). The angle between these segments is 234°. The diagram also shows the distance from RWY 23 to MAMBO (0.9 NM) and the distance from MAMBO to HOSOK (3.7 NM). The diagram includes various symbols for obstacles and navigation aids.

HIRL Rwy 12-30
 MRL Rwy 5-23
 REIL Rwy 12 and 30

CATEGORY	A	B	C	D
LPV DA		374-1	296 (300-1)	
LNAV/VNAV DA		414-1 1/4	336 (400-1 1/4)	
LNAV MDA		420-1	342 (400-1)	

SE-3, 31 OCT 2024 to 28 NOV 2024

SE-3, 31 OCT 2024 to 28 NOV 2024