

HI-TACAN Z RWY 23L

VORTAC EDW 116.4 Chan 111	APCH CRS 226°	Rwy ldg TDZE 15,024 2286 Arprt Elev 2311
---------------------------------	------------------	--

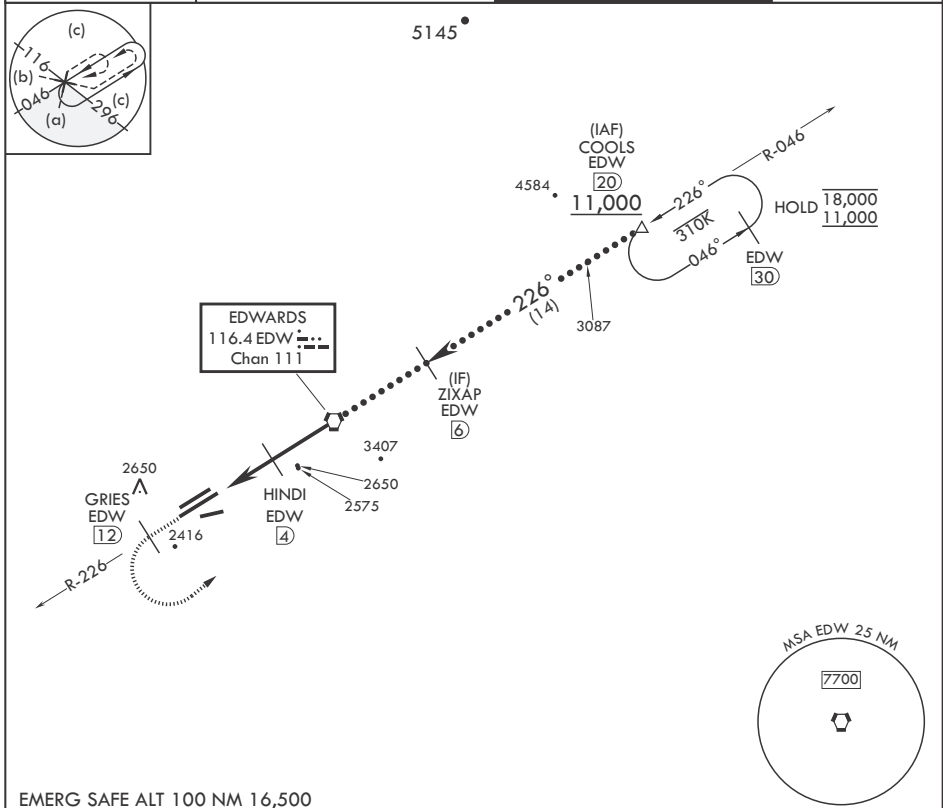
(USAF)

EDWARDS AFB (KEDW)

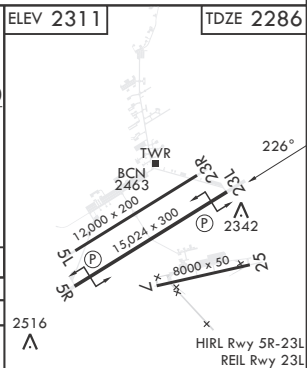
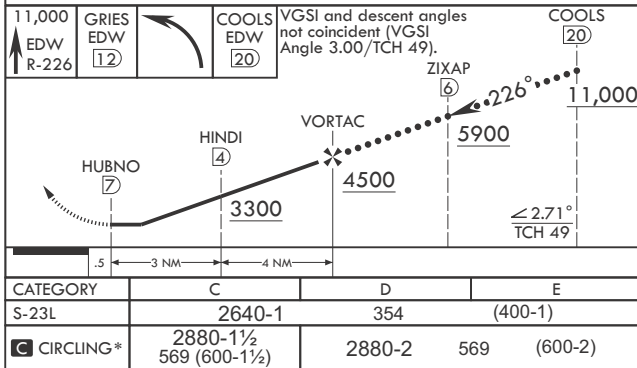
V * Circling NA NW of Rwy 5L-23R. Circling not authorized at night to Rwy 5L-23R.

MISSED APPROACH: Climb to 11,000. Track EDW VORTAC R-226 outbound to GRIES, then turn left direct COOLS and hold. Missed Approach requires use of RNAV or ATC RADAR monitoring.

ATIS * 127.425 269.9	JOSHUA APP CON/DEP CON 133.65 348.7	TOWER * 120.7 (CTAF) 318.1 (CTAF)	GND CON 121.8 225.4
-------------------------	--	--------------------------------------	------------------------



EMERG SAFE ALT 100 NM 16,500



HI-TACAN Z RWY 23L

SW-3, 31 OCT 2024 to 28 NOV 2024

SW-3, 31 OCT 2024 to 28 NOV 2024