

EDWARDS, CALIFORNIA

RNAV (GPS) RWY 5R

APCH CRS **046°**
 Rwy Idg **15,024**
 TDZE **2303**
 Arprt Elev **2311**

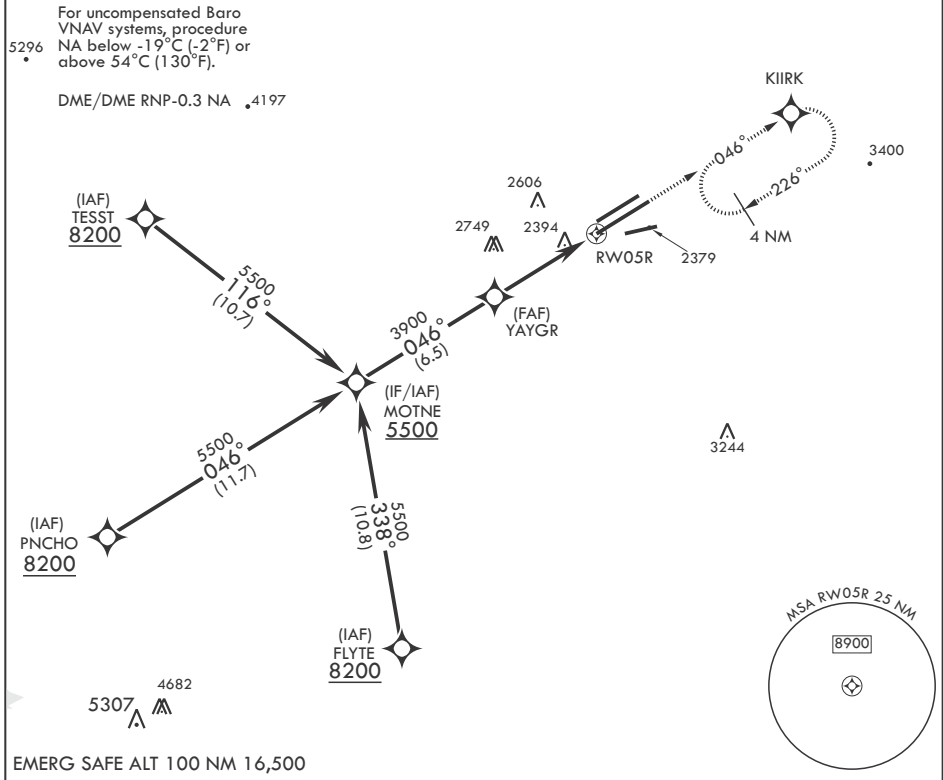
(-USAF)

EDWARDS AFB (KEDW)

⚠ * Circling not authorized NW of Rwy 5L-23R.

MISSED APPROACH: Climb to 5700 direct KIIRK and hold, continue climb-in-hold to 5700.

ATIS* 127.425 269.9	JOSHUA APP CON/DEP CON 133.65 348.7	TOWER* 120.7 (CTAF) 318.1 (CTAF)	GND CON 121.8 225.4
-------------------------------	---	--	-------------------------------



MOTNE	VGSi and descent angles not coincident.					5700	KIIRK	ELEV 2311	TDZE 2303
5500	046°					3900	YAYGR	2680	
	GP 3.00° TCH 50					1.5 NM to RWY 5R	RWY 5R		
	4.8 NM								
CATEGORY	A	B	C	D	E				
LNAV/VNAV DA	2820-1 ³ / ₈		517	(600-1 ³ / ₈)					
LNAV MDA	2820-1	517 (600-1)	2820-1 ³ / ₈	517	(600-1 ³ / ₈)				
C CIRCLING*	2880-1	569 (600-1)	2880-1 ¹ / ₂	569 (600-1 ¹ / ₂)	2880-2	569 (600-2)			
							HIRL Rwy 5R-23L REIL Rwy 23L 		

EDWARDS, CALIFORNIA

34°54'N - 117°53'W

EDWARDS AFB (KEDW)

Amdt 1 30JAN20

RNAV (GPS) RWY 5R

SW-3, 31 OCT 2024 to 28 NOV 2024

SW-3, 31 OCT 2024 to 28 NOV 2024