

EDWARDS, CALIFORNIA

# VOR/DME or TACAN Y RWY 23L

VORTAC EDW 116.4 Chan 111	APCH CRS 226°	Rwy ldg TDZE 15,024 2286 Arprt Elev 2311
---------------------------------	------------------	--

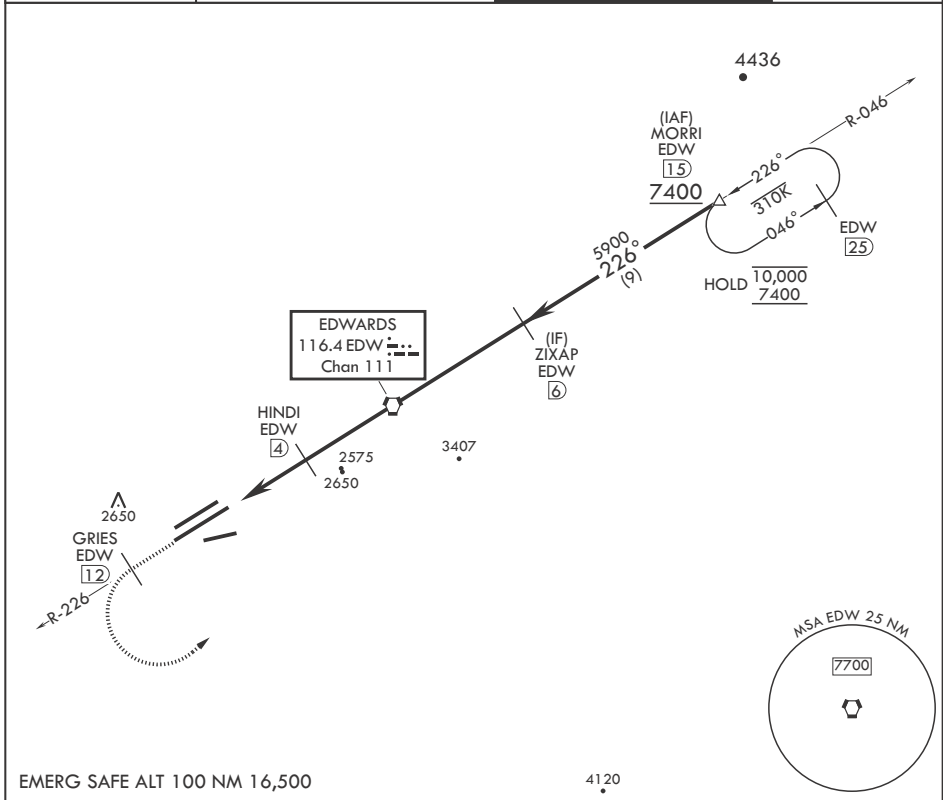
-(USAF)

EDWARDS AFB (KEDW)

**⚠** \* Circling not authorized NW of Rwy 5L-23R. Circling not authorized at night to Rwy 5L-23R.

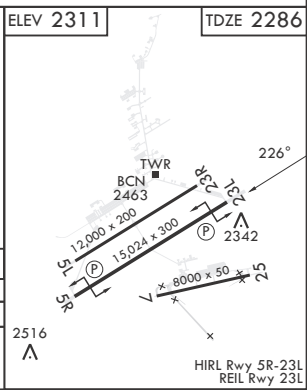
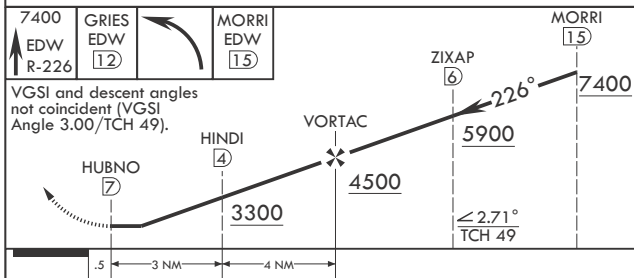
**MISSED APPROACH:** Climb to 7400. Track EDW VORTAC R-226 outbound to GRIES, then turn left direct MORRI and hold. Missed Approach requires use of RNAV or ATC RADAR monitoring.

ATIS ★ 127.425 269.9	JOSHUA APP CON/DEP CON 133.65 348.7	TOWER ★ 120.7 (CTAF) 318.1 (CTAF)	GND CON 121.8 225.4
-------------------------	--	--------------------------------------	------------------------



EMERG SAFE ALT 100 NM 16,500

4120



CATEGORY	A	B	C	D	E
S-23L	2640-1		354	(400-1)	
<b>C</b> CIRCLING*	2880-1 569 (600-1)		2880-1½ 569 (600-1½)	2880-2 569 (600-2)	

EDWARDS, CALIFORNIA

34°54'N - 117°53'W

EDWARDS AFB (KEDW)

Amdt 2 23APR20

# VOR/DME or TACAN Y RWY 23L

SW-3, 31 OCT 2024 to 28 NOV 2024

SW-3, 31 OCT 2024 to 28 NOV 2024