

WAAS CH 90432 W31A	APP CRS 306°	Rwy Idg TDZE Apt Elev 5601 583 595
--	------------------------	--

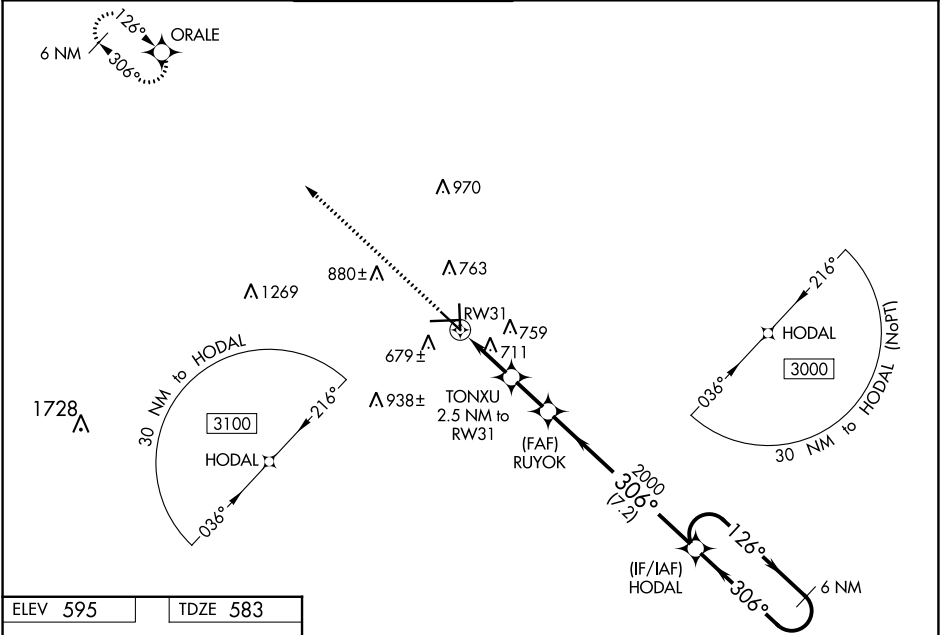
RNAV (GPS) RWY 31

SAN MARCOS RGNL (HYI)

▼ Baro-VNAV NA when using New Braunfels altimeter setting. For uncompensated Baro-VNAV systems, LNAV/VNAV NA below -16°C (3°F) or above 54°C (130°F). When local altimeter setting not received, use New Braunfels altimeter setting and increase all DA 43 feet and all MDA 60 feet; increase LPV all Cats and LNAV/VNAV all Cats visibility 1/8 mile and LNAV Cat C/D/E and Circling Cat C/D visibility 1/4. Circling NA for Cat E SW of Rwy 13-31. DME/DME RNP-0.3 NA. VDP NA with New Braunfels altimeter setting. Helicopter visibility reduction below 3/4 SM NA.

MISSED APPROACH:
Climb to 3500 direct ORALE and hold.

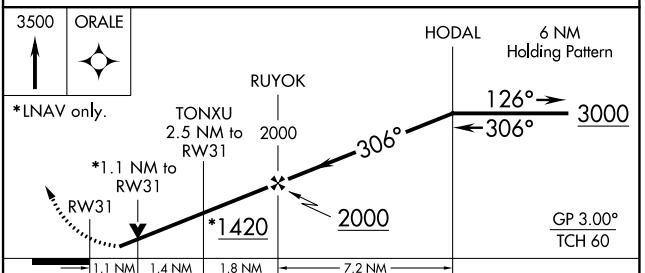
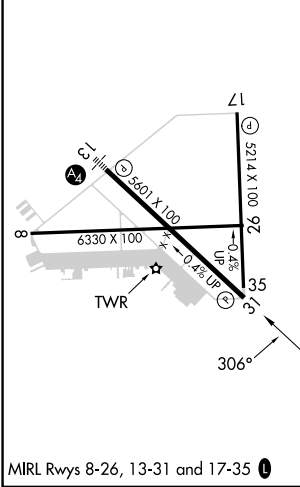
ATIS ★ 120.825	AUSTIN APP CON 119.0 370.85	SAN MARCOS TOWER★ 126.825 (CTAF) 📻	GND CON 120.125	CLNC DEL 120.125	CLNC DEL 121.35 (when twr closed)
--------------------------	---------------------------------------	---	---------------------------	----------------------------	--



SC-3, 31 OCT 2024 to 28 NOV 2024

SC-3, 31 OCT 2024 to 28 NOV 2024

ELEV 595	TDZE 583
-----------------	-----------------



CATEGORY	A	B	C	D	E
LPV DA	860-7/8 277 (300-7/8)				
LNAV/VNAV DA	906-1 323 (400-1)				
LNAV MDA	980-1 397 (400-1)		980-1 1/8 397 (400-1 1/8)		
📻 CIRCLING	1080-1 485 (500-1)	1120-1 525 (600-1)	1240-1 3/4 645 (700-1 3/4)	1320-2 1/4 725 (800-2 1/4)	1340-2 3/4 745 (800-2 3/4)