

APP CRS	Rwy Idg	<b>6300</b>
<b>190°</b>	TDZE	<b>6451</b>
	Apt Elev	<b>6451</b>

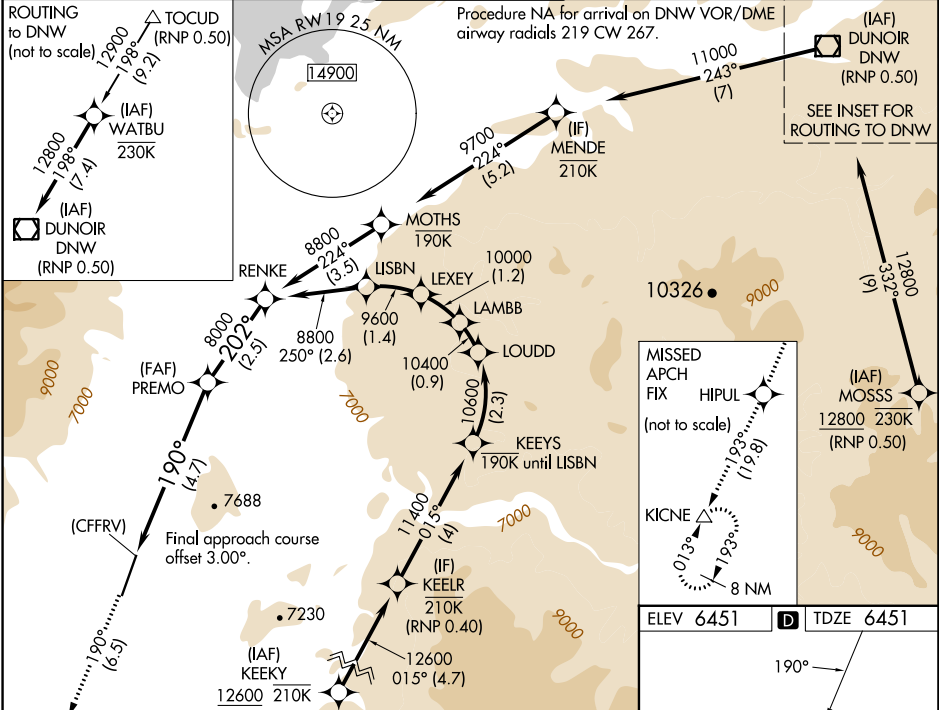
# RNAV (RNP) X RWY 19

JACKSON HOLE (JAC)

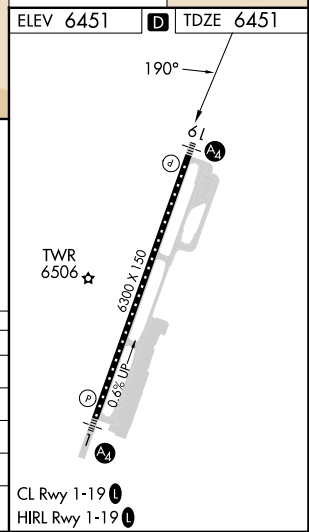
RNP AR APCH-GPS.  
 -22°C  
 For uncompensated Baro-VNAV systems, procedure NA below -27°C or above 54°C. For inop ALS, increase RNP 0.20# all Cats visibility to RVR 6000. For inop ALS, increase RNP 0.30 all Cats visibility to 1½ SM.

MALS   
 MISSED APPROACH: Climb to 14000 on track 190° to HIPUL and on track 193° to KICNE and hold, continue climb-in-hold to 14000. \*Missed approach requires minimum climb of 226 feet per NM to 11600. #Missed approach requires minimum climb of 215 feet per NM to 11600.

D-ATIS <b>120.625</b>	SALT LAKE CENTER <b>133.25 285.6</b>	JACKSON TOWER* <b>118.075 (CTAF) </b>	GND CON <b>124.55</b>	UNICOM <b>122.95</b>
--------------------------	---	--	--------------------------	-------------------------



14000 ↑ tr 190°	HIPUL	tr 193°	KICNE
See planview for multiple IF locations.			
(CFFRV)		PREM0	RENKE
190°		8000	8800
4.7 NM		2.5 NM	
		GP 3.00°	TCH 53



CATEGORY	A	B	C	D
RNP 0.10 DA*		6777/40	326 (400-¾)	
RNP 0.20 DA#		6856/50	405 (500-1)	
RNP 0.30 DA#		6938/60	487 (500-1½)	
RNP 0.30 DA		7045-1⅓	594 (600-1½)	

**AUTHORIZATION REQUIRED**

NW-1, 31 OCT 2024 to 28 NOV 2024

NW-1, 31 OCT 2024 to 28 NOV 2024